

## Site No 94

### Ian Paterson & Tam Ward

Site No 94 was originally recorded as:

221 151 Site No 94 Chert, flint, pitchstone, Mudstone, pottery  
NS 95930 10167

The site lies on a gentle slope on the lower east flank of Coom Rig at 300m OD, and above a subtle break of slope down to the east and it is at the southern end a break of slope which steepens immediately to the north of the site and continues for some distance (PI's 1 & 2).

Turf and peat measured up to 0.4m in depth over the entire area, but below this in the main part of the trench where most Neolithic finds were retrieved, there was a compacted clayey soil of about 100mm deep, and it contained small stones (PI's 3 & 6). Above this soil lay a loose pile of boulders (PI 4). On the remainder of the trench and above 10m on the baseline towards the forest drain, the sub surface was the typical podsol (PI 6) which appeared on nearly every other site.

A base line was set from which all finds and features were recorded (Fig 1). At zero on the base the NGR is 95933 10164 and was 2970 mag. At 4m on the base the GPS reading was NS 95930 10163, at 9m base it was 95926 10165 and at 11m base it was NS 95924 10165.

Three furrows produced artefacts as surface finds and also by trowelling of the furrows for a distance of c 4m each. Designated south, centre and north the finds are as follows:

South furrow; Chert 4 of  
Pitchstone 2 of  
Chert scraper

The south furrow is not on Fig 1 plan.

Centre furrow: Chert 50 of  
Chert scraper  
Flint 2 of  
Pitchstone 5 of  
Sherd EN, carination? 1 of  
Sherd EN, in situ from Feature No 1 = charcoal enriched spread  
Chert 7of, in situ from Feature No 1

North furrow: Chert 32 of  
Chert scraper  
Pitchstone 2 of  
Flint 3 of  
Mudstone? 1 of  
Pottery fragments 2 of

The following items, all chert, were found in the vicinity of Site No 94, circa 30m diameter from the site, the NGR (all NS) is given for each object:

95941 10171, 95922 10680, 95946 10146, 95917 10172, 95930 10149, 95922 10164, 95913 10181, 95916 10146, 95923 10145, 95923 10165,

The irregular shaped excavation area (Fig 1) covered a total area of c30square metres. The strategy was to follow finds and or features. The final trench extended down slope from a forest drain which itself had cut some archaeological material, especially F9. The features encountered are described as follows, with all features on Fig 1:

F1 was a discrete charcoal enriched spread in the orange coloured till, it extending for a depth of c 100mm below the surface of the till and part of it survived in the centre furrow. Charcoal (below) was retrieved from the bulk sample of this deposit and it included hazel nut shell. The entire area surrounding all of the features was also interspersed with occasional charcoal fragments which were embedded into the till surface, these were not sampled.

F2 (PI 4) was a pit (posthole?) which measured 0.2m in diameter and by 0.1m deep, it contained a homogenous fill of charcoal enriched soil which was bulk sampled and some charcoal was retrieved in the process (below).

F2a (PI 4) was an apparent cluster of smaller pits (stake holes?) which were in the order of 50mm in diameter by up to 100mm deep, although they were filled with a darker soil; they produced no charcoal above 1mm in size.

F3 (PI 5) was an amorphous shaped pit which measured 1m by 0.8m and was up to 0.25m deep, it had straight to gradual sides; the fill was fairly homogenous dark charcoal enriched sandy soil although some denser patches of charcoal were noted, a sample of charcoal was recovered.

Within the pit there was a quantity of pottery and lying on the upper surface of the fill (PI 7) were two substantial rim sherds from the same vessel (Fig 2) (PI 8 & 9) which has been a carinated bowl with a bold round top everted rim, the edges of the rim sherds and at least two body sherds from the same pot were fresh indicating that good preservation conditions existed. This pot was burnished on both internal and external sides and the fractured edges show that quartz and small angular pebbles up to 6mm in size were used as temper for the fabric of the pot.

Some of the other sherds (PI 8) from within the pit also conjoined but others were abraded indicating that was their state when deposited. At least three pots are represented.

Lying on the upper edge of the pit and beside the rim sherds there was an upper quern or rubbing stone (P 10), this is a greywacke cobble which has been used for grinding as the abrasion around its edges and its polished surface clearly shows. It may be important evidence of cereals being processed, although none were found in any of the soil samples.

Also found within the pit were a small flake of pitchstone and a quantity of chert. This association of EN pottery and pitchstone is a repeated theme on many sites which BAG has investigated.

F3a (PI 6) was a pit of 0.2m by 0.15m and c0.1m deep, it contained a dark soil which produced no charcoal above 1mm in size, the fill is presumed to have contained microscopic charcoal of which samples were not retained.

F3b (PI 6) was a pit of 0.2m by 0.12m and c0.1m deep, it contained a dark soil which produced no charcoal above 1mm in size, the fill is presumed to have contained microscopic charcoal of which samples were not retained.

F4 (PI 5) was an elongate pit the northern end of which was 0.3m diameter and with a bowl shaped base, it had gradual sides and reached 200mm deep below the surface of the till. The southern side was open and formed into F7 (below). The sample retrieved contained hazel nut shell and tiny pieces of burnt bone and the residue had a high proportion of burnt grit and stones, possibly derived from the nearby fire places. A single sherd and a quantity of chert were also recovered.

F5a (PI 5 & 11) was a pit, a stake hole, and 80 by 60 by 220 mm deep

F5b (PI 5 & 11) was a pit, a stake hole, and 80 by 60 by 50 mm deep.

F6 (PI 11) was a pit, 150mm deep below surface of till and 0.3m diameter; it had steep and gradual sides, hazel nut shell was included in its fill which also included a quantity of burnt bone (PI 12), some of which may be identifiable. A pitchstone flake and some chert were also recovered.

F7 was a linear pit, 0.5m long and up to 100mm deep, with steep sides, it may have been part of F4 although its appearance seemed to suggest a different feature. The sample produced a small amount of charcoal and some chert.

F8 was a pit, a stake hole? 50mm in diameter by 80mm deep

F9 (PI 13) was a spread of burnt and un burnt stone over a layer of charcoal, and all in a podsol on the south side of the drainage ditch which had cut through the deposit, truncating it on the west side. Charcoal was retrieved from the bulk sample of the area. Some chert was found in the deposit and a few pieces were found nearby in the drain section.

F10 was a pit, a stake hole which was 75mm diameter by 200mm deep

The clear indications of three fire places (PI 14) were seen by the intense discolouration of patches of the till which are normally orange, in each case the colour was changed to a reddish hue by the effect of heat and this extended for at least 50mm deep into the till in each instance, they were all c0.4m in diameter.

A substantial quantity of Early Neolithic pottery in the form of body sherds with fresh and abraded edges was found in the ground surrounding the features (see list below), it is clear from these and the others described in more detail that numerous vessels were present on this site, and expert analyses will be required to further this aspect.

In some parts of the site evidence of burrowing animals (PI 15), probably moles, was observed (PI) by extant tunnels running into and across the upper surface of the till. These were quite obvious and could not be mistaken for anthropogenic features. Fortunately none of the burrows appeared to interfere with the archaeological features.

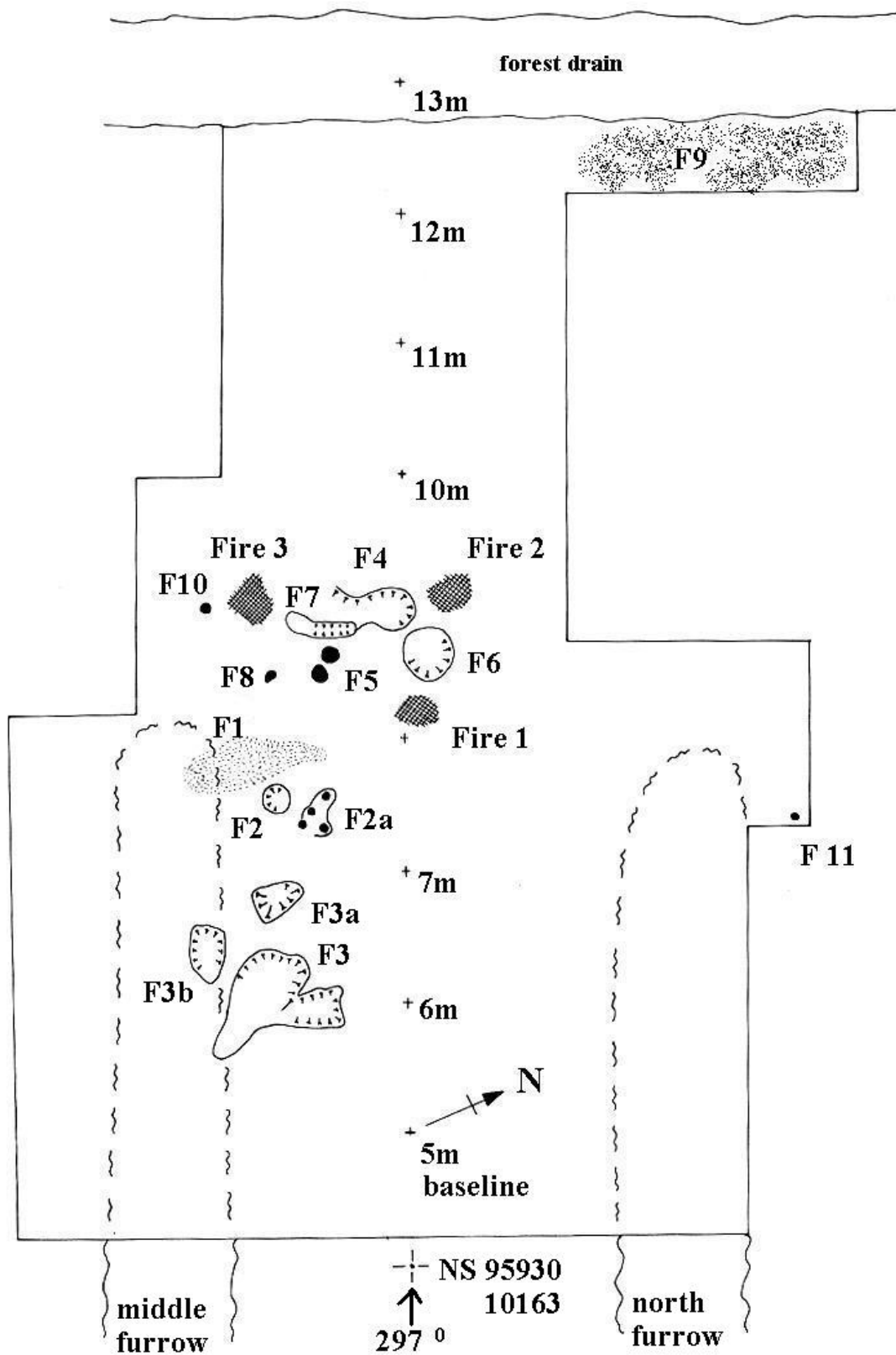


Fig 1

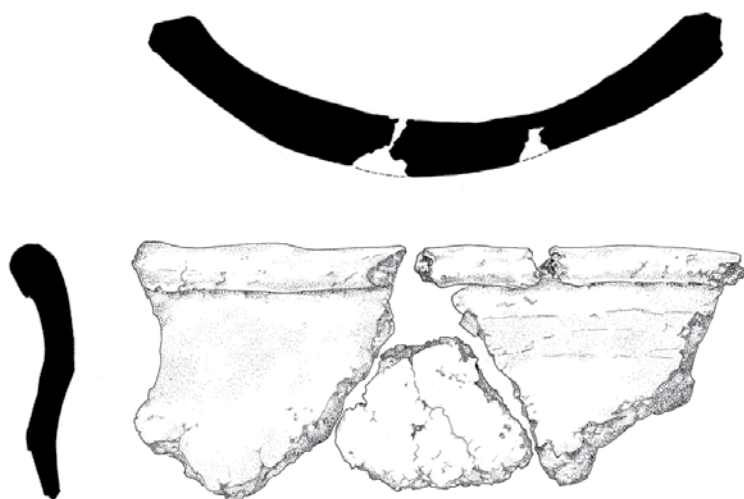


Fig 2



Fig 3

# Daer 2010 - 2011 Site 94

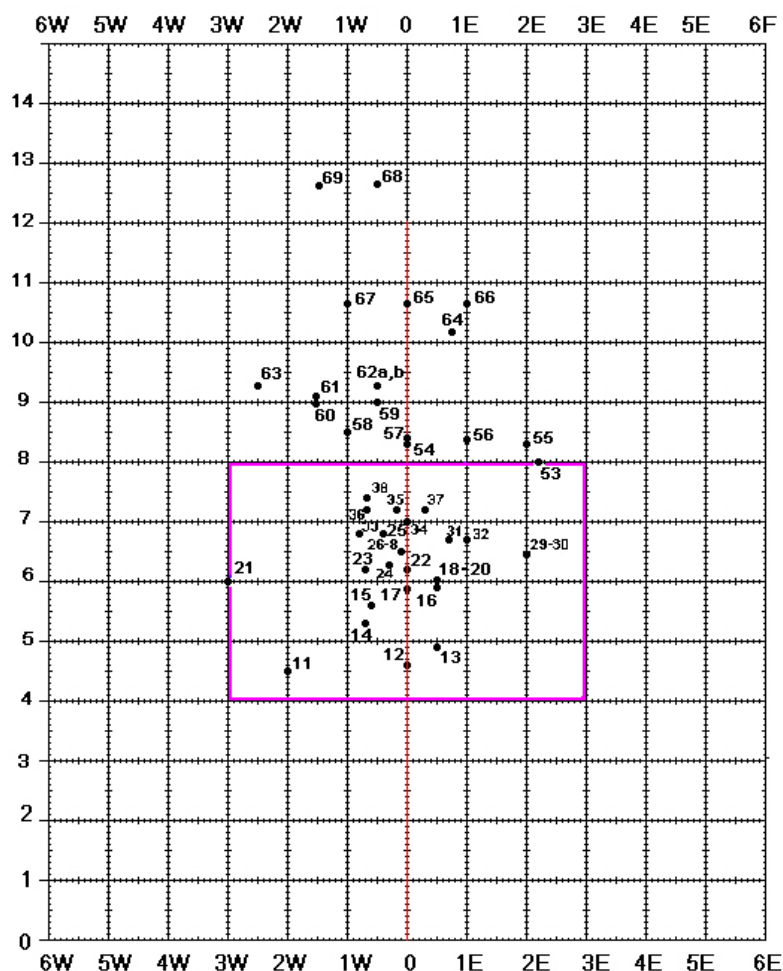


Fig. Daer 2010-11 - Site 94. Plan showing distribution of finds recovered by excavation. The area bounded by the purple line is shown on a larger scale in Fig X.

The grid lines are spaced at one metre intervals.

Fig 4

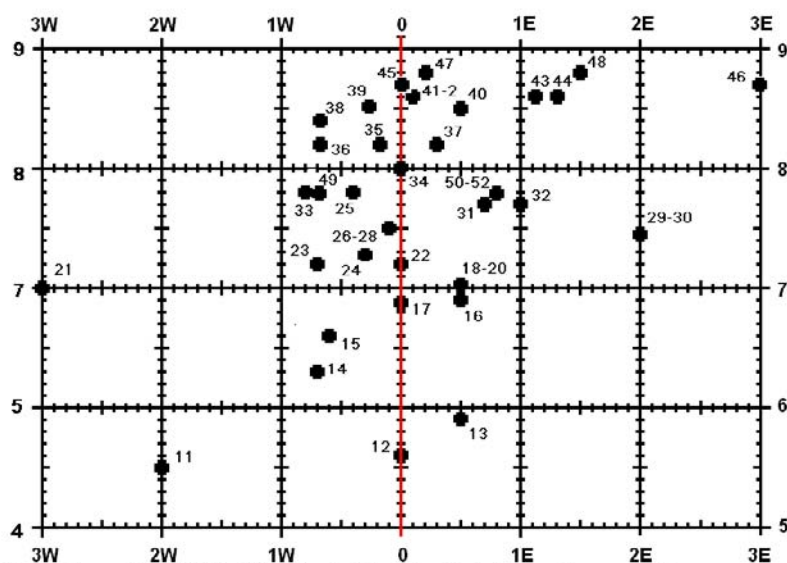


Fig. Daer 2010-2011, Site 94 - detail of the find places shown on Fig. x.  
Note: the grid lines are spaced at one metre intervals.

Fig 5





Plate 1



Plate 2



Plate 3



Plate 4

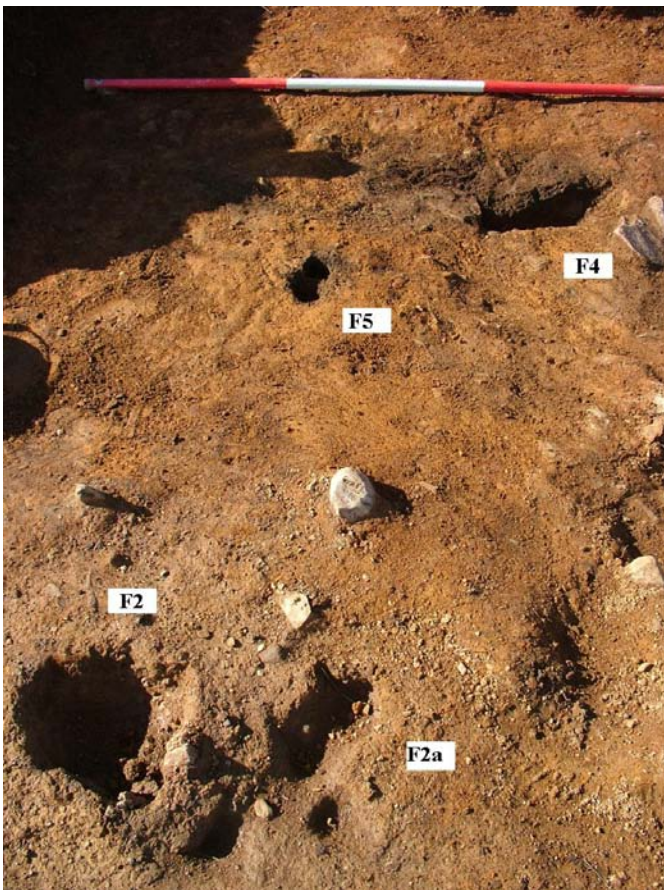


Plate 5



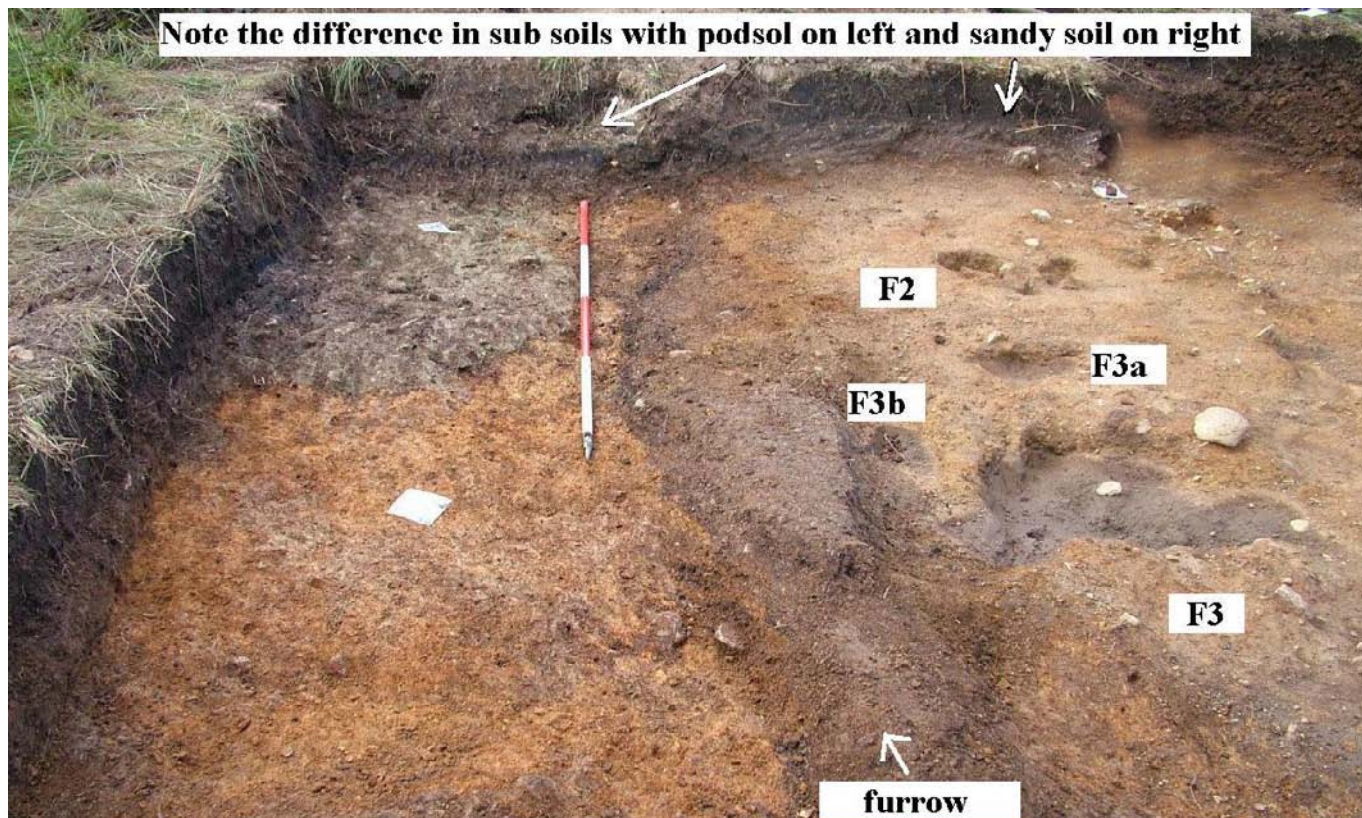


Plate 6



Plate 7



Plate 8



Plate 9



Plate 10





Plate11

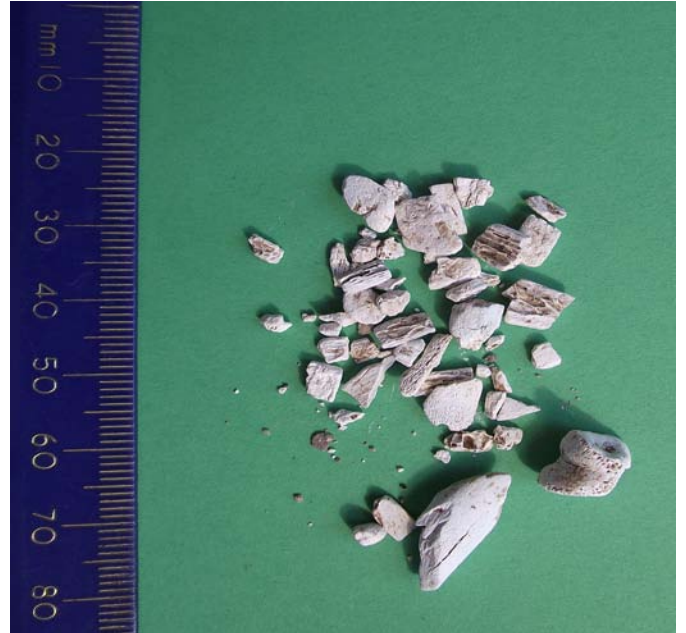


Plate 12



Plate 13



Plate 14



Plate 15



Plate 16





Plate 17



Plate 18



Plate 19



Plate 20



Plate 21





Plate 22



Plate 24



**Charcoal retrieved from features**

94	F1	16g	Hand picked + nut shell
94	F1	11.5g	Hand picked
94	F1	6.5g	+ grit & rootlets
94	F1	n/a	0.3mm flot
94	F2	9.5g	Hand picked
94	F2	12g	+ grit & rootlets
94	F2	n/a	0.3mm flot
94	F3	12.5g	Hand picked
94	F3	25g	+ grit & rootlets
94	F3	n/a	0.3mm flot
94	F4 upper	14.5g	+ nut shell
94	F4 upper	n/a	0.3mm flot
94	F4	39.5g	Hand picked
94	F4	24g	+ grit & rootlets
94	F4	n/a	0.3mm flot
94	F4	6.5 g	+ nut shell
94	FIRE 1	7g	Nut shell + round wood
94	FIRE 3	3g	
94	F5	6 g	
94	F5	n/a	0.3mm flot
94	F6	11.5 g	Nut shell
94	F6	n/a	0.3mm flot
94	F7	9.5g	
94	F7	n/a	0.3mm flot
94	F9	15g	

**Discussion**

Nothing given below can be taken with certainty; however the evidence from Site 94 does appear to indicate the transition from a Mesolithic site to a permanent settlement. This site is now one of five locations at Coom where both periods have been clearly represented by microliths and cores (PI's 16 & 17) from the earlier period and pottery and pitchstone from the later one. Site 94 is one of the best locations from which to suggest the transition and this is on the basis of the following:

On all of the lithic sites so far investigated, the finds have been made in the ogs or podsol which overlies the till. The exceptions have been objects in features which were cut into the till. For the most part on Site 94 and up to about 10m on the base line the finds were retrieved

from the interface with the ogs and the till, and also from the till itself and to a depth of about 50mm, and in features cut into the till. Hardly anything was found in the sub soil above the till and which was distinctively different from the nearby podsol nearer the drain, where further along the base line all of the finds were made in the podsol only with none in the till.

The finds in the till and the features include; EN pottery, one sherd was located immediately below Fire 3 therefore phasing the fire to after the EN sherd was deposited. Others were found in the till for example see Plate 8 and Fig 3. Pitchstone was found in the till and two pieces came from features, one of which also had pottery. A small flint leaf arrowhead (PI 18) found in the till along with a flint scraper (PI 19) and two unusually large chert scraper/knives (P's 20 & 21) are all judged to be Early Neolithic objects.

The finding of microliths and pitchstone (PI 22) on the same site certainly represents the earlier of two different cultures; Mesolithic and Early Neolithic.

The six small chert scrapers (PI 23) are probably Mesolithic in date and they were nearly all found in the till or at the interface with the till and the ogs. Four microliths, three of flint and one of chert were found in the podsol at the western end of the trench where the zone between the peat and the till was much more akin to that found on nearly all other sites, that is a clayey podsol.

Features included pits and probable stakeholes although structural features could not be implied with certainty. The proximity of the three fireplaces and the cut features and taken along with the finds all appear to form a cluster which indicated the main activity zone during an Early Neolithic event. The ground to the north, south and east of the features produced hardly any finds from the ogs, nearly all coming from the interface between the till and the ogs or the till itself.

For that reason it is reckoned that the ground previously occupied by hunter gatherers was stripped of soil for the EN activity, presumably a settlement, after which a soil re developed over the site and which was devoid of finds for the most part. The small chert scrapers, if they are of Mesolithic date, may have been used over the two cultural periods or they are residual from an earlier occupation of the site. The significance of the four microliths from the western end of the trench, apart from their clear affinity to the Mesolithic period, is that they were found in the podsol which existed there and this suggests that that area of ground was not stripped of top soil, leaving some Mesolithic objects to be subsumed from a soil profile into a podsolised one. The discovery of pitchstone and microliths (PI 22) in the same trenches is repeated in this project and may be further strand of evidence of the two merging cultures.

The current working hypothesis is that we have found the elusive Scottish 'transition' between Mesolithic and Early Neolithic. To help with this we need an expert opinion on the tools and of the debitage from the site, and radio carbon dates from the features.

Tiny fragments of burnt bone have been retrieved from two features, especially F4 (PI 12); some of which may be identifiable, and one pit produced a small quantity of hazel nut shell, both of these aspects probably represent food preparation and consumption.

Stones lying above the ogs/podsol (PI 4) may represent an undeveloped cairn, perhaps Bronze Age? As other small cairns were found nearby.

The sherds found in the upper till were mineralised to some extent while those found lower in the till were in perfect condition, often with fresh breaks. The pottery which had been displaced by ploughing had not survived well making a marked distinction between the preservation conditions on this site.

**Excavation finds list**  
**by**  
**Ian Paterson**

## **Introduction**

The colour descriptions used in this catalogue are from the Rock Colour Chart as published on the Internet by the Geological Society of America.

This excavation covered about 30 sq. m. Chert predominated, 950 fragments being recovered – some from features - but there were only 23 pieces of flint. However, 12 fragments of pitchstone were present and 66 pottery sherds were individually plotted. Figs 4 & 5 show the distribution.

### **94/1 Site 94/Fire 1**

**Bone**

Fragment, 1 of, burnt.

**Chert**

a Medium Flakes, 3 of, grey and medium grey [N 4, N5] with rough fracture.

### **94/2 Site 94/Fire 2**

**Bone**

Fragments 6 of, burnt.

### **94/3 Site 94/Fire 3**

**Chert**

a Scraper, greyish black [N 2], rough fracture.

b Core, greyish black [N 2], rough fracture - radiolarians.

c Large Chunk 1 of, and 2 flakes; dark grey [N 3], rough fracture.

d Medium Flakes, 13 of, dark grey and medium dark grey [N 3 - 4], rough fracture.  
One flake with brown alteration shows abundant radiolarians.

e Flake, 1 of, dark greenish grey [5 GY 4/1] with smooth fracture - mostly replaced by brownish black [5 YR 2/1],

f Small Flakes, 7 of, various types.

**'Grey chert'**

g Medium Flakes, 3 of, medium, light brownish grey [5 YR 6/1].



#### **94/4 Site 94/below Fire 3**

##### **Pottery**

Sherd, 1 of, moderate yellowish brown [10 YR 5/4], fabric, slightly micaceous, silt grade.

#### **94/5 Site 94/F3**

##### **Pottery [Plate 6] [Fig 2]**

Sherds, 4 of including two rim sherds all from the same vessel with a rim diameter of about 230mm. The rim is 17mm wide and boldly everted, with a round top and being curled round the external side and in a 5mm projection. The sherd body is 10mm thick and is burnished overall, the interior has a thin sooty encrustation and the edges show quartz and pebble inclusions up to 5mm as temper. This is clearly an Early Neolithic carinated bowl type.

Sherds, 5 of, conjoined [using UHU] and probably curving towards a rim (missing), the sherd is burnished on the external side and the interior has a black sooty encrustation. The sherd thickness varies from 8mm (at rim?) to 12mm.

Sherds, 2 of, conjoined [using UHU] burnished both sides and possibly curving out to everted rim, 5mm – 6mm thick.

Sherd, similar in appearance to the two above and may be from the same vessel, but 9mm thick.

Sherds, 2 of, both conjoined [using UHU] from two pieces each and similar in appearance with external buff coloured surface weathered but internal face black and smoothed.

Sherds/fragments 6 of.

##### **Greywacke**

Possible quern stone or smoothing stone. A natural rounded boulder, 200mm x 150mm x 55mm. One side is smoothed.

##### **Pitchstone**

Flake, medium, dusky brown [5 YR 2/2].

##### **Chert**

- a Large Chunk, 1 of, brownish grey [5 YR 4/1], rough fracture.
- b Chunk, 1 of, dark greenish grey [5 GY 4/1], part brownish grey [5 YR 4/1] with smooth fracture.
- c Medium Chunk, 1 of, brownish grey [5 YR 4/1], rough fracture.

### **94/5/1 5.7B/0.5W Found beside F3 above [Plate 6] [Fig 3]**

Sherd, rim sherd, prominently everted round topped rim, 10mm thick and extends 20mm from external side, both sides burnished and dark buff coloured. Rim diameter possibly 230mm.

### **94/6 Site 94/F4**

#### **Pottery**

small body sherd, light brown [5 YR 6/4], with temper of rounded quartz grains.

#### **Bone**

quantity of, burnt.

#### **Chert**

- a Medium Flakes, 6 of, dark grey and medium dark grey [N 3 - N 4], rough fracture.
- b Small Flakes, 20 of, various types.

### **94/7 Site 94/F4 upper**

#### **Chert**

- a Scraper, olive grey [5 Y 4/1], rough fracture.

### **94/8 Site 94/F5**

#### **Chert**

Flakes, small, 2 of, light brownish grey [5 YR 6/1], rough fracture - possibly flint.

### **94/9 Site 94/F6**

#### **Bone**

quantity of , burnt.

#### **Pitchstone**

Small flake of, grey with paler flow lamination.

#### **Chert**

- a Medium Flakes, 3 of, medium dark grey [N 4], rough fracture.
- b Small Flakes, 6 of, various types.

### **94/10 Site 94/F7**

#### **Chert**

- a Large Chunk, 1 of, medium grey [N 5], pale alteration, radiolarians, rough fracture.
- a Medium Flake, 1 of, medium dark grey [N 4], rough fracture.
- b Flake, 1 of, dark greenish grey [5 GY 4/1], smooth fracture.
- c Small Flakes, 8 of, various types.

**94/11 c. 4.5B/2.0W**

**Chert**

- a Large Chunks, 2 of, olive grey [5 Y 4/1] - one with darker mottling, pale alteration, smooth fracture, radiolarians.
- b Medium Flakes, 2 of, olive grey [5 Y 4/1], smooth fracture,.

**94/12 c. 4.6B/0.0W**

**Pitchstone**

Flake, 1 of, medium, dark grey.

**Chert**

- a Large Chunks, 2 of, medium dark grey [N 4] - pale alteration, rough fracture, radiolarians.
- b Medium Flakes, 3 of, medium dark grey [N 4], rough fracture.
- c Flakes, 3 of, olive grey [5 Y 4/1], smooth fracture.
- d Small Flakes, 2 of, olive grey [5 Y 4/1], smooth fracture.

**94/13 c. 4.9B/0.5E**

**Flint**

Scraper, 1 of, 46 x 29mm, pale brown [5 YR 5/2].

**94/14 5.3B/0.7W**

**Chert**

- a Large Chunk, 1 of, possible scraper, olive grey [5 Y 4/1], smooth fracture - radiolarians.
- b Medium Flakes, 2 of, olive grey [5 Y 4/1], smooth fracture.

**'Red chert'**

- c Flake, medium, dusky brown [5 YR 2/2], smooth fracture.

**94/15 5.6B/0.6W**

**Pottery**

Sherd, 1 of, 12-15mm thick, from large vessel c.200 mm in diameter; fabric pale brown [5 YR 5/2], sand grade with rounded pebbles up to 3mm long.

**94/16 c. 5.9B/0.5E**

**Pottery**

Sherd, 1 of, 9mm thick, from large vessel; fabric moderate brown [5 YR 4/4], sand grade.



**94/17 c. 5.9B/0.5E**

**Chert**

a Medium Flakes, 3 of, olive grey [5 Y 4/1] with brown mottling, smooth fracture.

**94/18 c. 6.0B/0.5W**

**Pottery**

Sherds, 2 of, one is up to 15mm thick, from large vessel; fabric moderate brown [5 YR 4/4], sand grade with a few rounded pebbles up to 3mm long.

**94/19 c. 6.0B/0.5W**

**Pottery**

Sherds, 3 of, one is up to 15mm thick, from large vessel; fabric moderate brown [5 YR 4/4], sand grade with a few rounded pebbles up to 3mm long. Similar to 94/18.

**94/20 c. 6.0B/0.5W**

**Pottery**

Sherds, 7 of, one is up to 11mm thick, from large vessel; fabric moderate reddish brown [10 R 4/6], sand grade with a few rounded pebbles up to 3mm long.

**94/21 c. 6.0B/3.0W**

**Chert**

a Scraper, 1 of, olive grey [5 Y 4/1] with thin dark grey veins, smooth fracture.

**94/22 c. 6.2B/**

**Pottery**

Sherd, 1 of, 11mm thick, from large vessel; fabric moderate reddish brown [10 R 4/6], sand grade with a few rounded pebbles up to 3mm long - similar to 94/20.

**94/23 c. 6.2B/0.7W**

**Pottery**

Sherds, 7 of, up to 13mm thick, and 6 crumbs, from large vessel; fabric moderate reddish brown [10 R 4/6], sand grade with a few rounded pebbles up to 3mm long - similar to 94/20.

**94/24 c. 6.3B/0.3W**

**Chert**

a Knife, 1 of, 77mm long, up to 40mm broad, dark grey [N 3] with greyish black [N 2] mottling, smooth fracture.

b Medium Chunk, 1 of, medium dark grey [N 4], pale alteration, rough fracture.

**94/25 c. 6.4B/0.8W**

**Pottery**

Sherd, 1 of, up to 13mm thick, perhaps from base with lower side, of large vessel; fabric moderate brown [5 YR 4/4], sand grade with a few rounded pebbles up to 3mm long.

**94/26 c. 6.5B/0.1W**

**Pottery**

Sherd, 1 of, c.11mm thick, from large vessel; fabric moderate reddish brown [10 R 4/6], sand grade with a few rounded pebbles up to 3mm long.

**94/27 6.5B/0.1W**

**Chert**

- a Large Chunks, 2 of, olive grey [5 Y 4/1], smooth fracture.
- b Medium Flakes, 2 of, olive grey [5 Y 4/1], smooth fracture.

**94/28 6.5B/0.1W 'In till' <sup>1</sup>**

**Pottery**

Sherds, 5 of, up to 11mm thick, from side of large vessel, c.200mm in diameter, fabric moderate brown [5 YR 4/4], sand grade with a few rounded pebbles up to 3mm long - cf.94/18.

**94/29 6.5B/2.0E 'In till'**

**Pottery**

Sherds, 6 of, up to 13.5mm thick, from side of large vessel, fabric moderate brown [5 YR 4/4], sand grade with a few rounded pebbles up to 3mm long with internal residue.

**94/30 6.5B/2.0E 'In till'**

**Pitchstone**

Flake, 1 of, small, dusky brown [5 YR 2/2].

**Chert**

- a Medium Flakes, 2 of, medium dark grey [N 4], pale alteration, rough fracture.
- b Flakes, 4 of, dark greenish grey [5 GY 4/1] - one with darker mottling, smooth fracture.

**'Grey chert'**

- c Flakes, 2 of, medium, light brownish grey [5 YR 6/1].

**94/31 6.7B/0.7E 'In till'**

**Chert**

- a Medium Flake, 1 of, olive grey [5 Y 4/1], smooth fracture.
-

### **94/32 6.7B/1.0E In situ**

#### **Flint**

Flake, small, very light grey [N 8].

#### **Chert**

- a Medium Flakes, 6 of, medium dark grey [N 4], rough fracture.
- b Flakes, 4 of, dark greenish grey [5 GY 4/1] - smooth fracture.
- c Small Flakes, 5 of, various types.

#### **'Grey chert'**

- d Large chunk and 2 medium flakes, light brownish grey [5 YR 6/1].

#### **'Red chert'**

- e Flakes, 2 of, medium, dusky brown [5 YR 2/2], one with part dark greenish gray, smooth fracture.

### **94/33 6.8B/0.8W 'In till'**

#### **Pottery**

Sherds, 5 of, up to 9mm thick, from large vessel; fabric pale brown [5 YR 5/2], sand grade.

### **94/34 7.0B/0.0**

#### **Chert**

- a Large Chunk, 1 of, medium dark grey [N 4], pale alteration, rough fracture. With iron pan<sup>2</sup>.

### **94/35 7.2B/0.1W**

#### **Pottery**

Sherd, 1 of, 7-8mm thick, from side of large vessel; fabric greyish black [N 2], pale on exterior; fabric sand grade with a few small rock fragments. 'Good residue'.

### **94/36 7.2B/0.7W**

#### **Pottery**

Sherds, 3 of, up to 10mm thick, from large vessel; fabric pale brown [5 YR 5/2], sand grade.

### **94/37 7.2B/0.3E**

#### **Chert**

- a Medium Chunk, 1 of, medium dark grey [N 4], pale alteration, rough fracture.

### **94/38 7.4B/0.7W F1**

#### **Pottery**

Sherd, 1 of, from thickened everted rim, from vessel c. 250mm in diameter at rim; fabric moderate brown [5 YR 4/4], sand grade with abundant angular rock fragments.

---

**94/39 7.5B/0.3W In situ****Pottery**

Sherd, 1 of, 5mm thick, from sidewall of vessel c.200mm in diameter; fabric light brown [5 YR 5/4], sand grade with abundant angular rock, ?lava, fragments.

**94/40 7.5B/0.5E In situ****Pottery**

Sherd, 1 of, 7.5mm thick, from sidewall of vessel c.240mm in diameter; fabric light brown [5 YR 6/4], sand grade with abundant angular and sub angular rock fragments.

**94/41 7.6B/0.1E In situ****Pottery**

Sherds, 2 of, conjoining, 7-8mm thick, from sidewall of vessel c.250mm in diameter; fabric light brown [5 YR 6/4], sand grade with abundant angular and sub angular rock fragments.

**94/42 7.6B/0.1E****Chert**

- a Medium Flake, 1 of, medium dark grey [N 4], rough fracture.
- b Flake, 1 of, dark greenish gray [5 GY 4/1] with dusky brown [5 YR 2/2] mottling - smooth fracture.

**94/43 7.6B/1.1E 'In till'****Chert**

- a Core, 1 of, dark greenish gray [5 GY 4/1] - smooth fracture.

**94/44 7.6B/1.3E In situ****Pitchstone**

Chunk, 1 of, medium, medium dark grey [N 4] with paler flow-lamination, and 2 small flakes also [N 4].

**Chert**

- a Scraper, dark greenish gray [5 GY 4/1] with dusky brown [5 YR 2/2] mottling - smooth fracture.
- b Large Flakes, 2 of, medium grey [N 5] with pale alteration, rough fracture; radiolarians.
- c Medium Flakes, 24 of, medium grey [N 3] and medium dark grey [N 4], some with pale alteration, rough fracture;
- d Flakes, 9 of, dark greenish gray [5 GY 4/1] - smooth fracture.
- e Flakes, 6 of, grayish black [N 2] - smooth fracture.
- f Small Flakes, 15 of, various types.

**'Grey chert'**

- g Large chunk, 1 of. and 2 medium flakes, light brownish grey [5 YR 6/1], smooth fracture.

**94/45 7.7B/0 In situ****Pitchstone**

Flake, 1 of, small, dark grey [N 3].

**Chert**

- a Medium Flakes, 7 of, medium dark grey [N 4] - rough fracture;
- b Flakes, 4 of, olive gray [5 Y 4/1], one with brown mottling - smooth fracture.

**94/46 7.7B/3.0E****Chert**

- a Scraper, olive gray [5 Y 4/1], with darker mottling - smooth fracture.
- b Large Chunk, 1 of, medium gray [N 5], pale alteration - rough fracture.
- c Medium Chunks, 2 of, medium gray [N 5], pale alteration - rough fracture.

**94/47 7.8B/0.2E****Chert**

- a Medium Flake, olive gray [5 Y 4/1], with darker mottling - smooth fracture.

**94/48 7.8B/0.5E 'In till'****Pottery**

Sherd, 1 of, 7-8mm thick, from sidewall of vessel; fabric light brown [5 YR 6/4], sand grade with a few angular and sub angular rock fragments.

**94/49 6.8B/0.7W In situ****Flint**

Flake, small, very light grey [N 8].

**Chert**

- a Scraper, medium dark grey [N 4], rough fracture.
- b Point, olive gray [5 Y 4/1], with brown mottling - smooth fracture.
- c Large Chunk, 1 of, medium dark grey [N 4], pale alteration, radiolarians, rough fracture.
- d Medium Flakes, 5 of, medium dark grey [N 4], some with pale alteration, rough fracture.
- e Flakes, 3 of, dark greenish grey [5 GY 4/1] - smooth fracture.
- f Small Flakes, 2 of, various types.

**'Grey chert'**

- g Large chunk, light brownish grey [5 YR 6/1], radiolarians



### **94/50 6.8B/0.8E 'In till'**

#### **Pottery**

Sherd, 1 of, at least 15mm thick, perhaps from lower side/base of vessel; fabric greyish red [5 R 4/2], fabric - coarse sand grade.

### **94/51 6.8B/0.8E 'In till'**

#### **Pottery**

Sherds, 2 of, c.9mm thick, one, perhaps base, appears blackened, the other is from side of vessel c.25mm in diameter; fabric greyish red [5 R 4/2], fabric - coarse sand grade.

### **94/52 6.8B/0.8E 'In till'**

#### **Pottery**

Sherd, 1 of, c.9mm thick, appears to be base of vessel with lower part of side; fabric moderate brown [5 YR 4/4], fabric - medium sand grade.

### **94/53 8.0B/2.2E**

#### **Chert**

- a Scraper, dark greenish gray [5 GY 4/1], partly replaced by brownish grey [5 YR 4/1] - smooth fracture.
- b Medium Flakes, 7 of, medium dark grey [N 4], some with pale alteration, rough fracture.
- c Flakes, 3 of, 2 light olive grey [5 Y 6/1]; one dark greenish gray [5 GY 4/1], partly replaced by brownish grey [5 YR 4/1] - smooth fracture.

### **94/54 8.3B/0.0**

#### **Flint**

Flake, very small.

#### **Chert**

- a Microlith, olive grey [5 Y 4/1] - smooth fracture.
- b Large Chunk, 1 of, medium dark grey [N 4], pale alteration, radiolarians, rough fracture.
- c Chunks, 2 of, dark greenish grey [5 GY 4/1], smooth fracture.
- d Medium Flakes, 8 of, medium dark grey [N 4], rough fracture.
- e Flakes, 2 of, dark greenish grey [5 GY 4/1], one with dark mottling - smooth fracture.

#### **'Grey chert'**

- f Chunk, medium, light brownish grey [5 YR 6/1], smooth fracture.

**94/55 8.3B/2.0E****Flint**

Flakes, 3 of, light brownish grey [5 YR 6/1].

**Chert**

- a Large Flake, 1 of, medium dark grey [N 4], much pale alteration, rough fracture - radiolarians.
- b Medium Flakes, 16 of, medium dark grey [N 4], rough fracture - many with pale alteration - radiolarians.
- c Flakes, 8 of, olive grey [5 Y 4/1] and dark greenish grey [5 GY 4/1], one with dark mottling - smooth fracture.
- d Small Flakes, 5 of, various types.

**'Grey chert'**

- e Flakes, 3 of., medium, light brownish grey [5 YR 6/1], rough fracture.

**94/56 8.4B/1.0E 'In till'****Pottery**

Sherd, 1 of, 8.5mm thick, from side of large vessel; fabric greyish red [5 R 4/2] - black on interior, fabric - medium sand grade with a few sub angular rock fragments up to 3mm long.

**94/57 8.4B at fire.****Chert**

- a Large Flake, 1 of, possible scraper, medium dark grey [N 4], dark veins, rough fracture.

**94/58 8.5B/ 1.0W 'In till'****Flint**

Flake, small, light brownish grey [5 YR 6/1].

**Chert**

- a Medium Flakes, 8 of, medium dark grey [N 4], rough fracture.

**94/59 9.0B/ 0.5W****Chert**

- a Scraper, olive grey [5 Y 4/1], partly replaced by brownish grey [5 YR 4/1] - smooth fracture.
- b Large Chunks, 2 of, medium dark grey [N 4], pale alteration, rough fracture - radiolarians.
- c Chunks and flakes, 5 of, olive grey [5 Y 4/1] and dark greenish grey [5 GY 4/1], partly replaced by brownish grey [5 YR 4/1] - smooth fracture.
- d Medium Flakes, 20 of, dark grey [N 3 and ]medium dark grey [N 4], rough fracture - some with pale alteration - radiolarians.
- e Flakes, 9 of, olive grey [5 Y 4/1] and dark greenish grey [5 GY 4/1], 5 with dark mottling - smooth fracture.
- f Small Flakes, 10 of, various types.

**'Grey chert'**

g Flakes, 2 of., medium, light brownish grey [5 YR 6/1], rough fracture.

**94/60 9.0B/ 1.5W**

**Flint**

Blade, 1 of, 28mm - end broken off, pale yellowish brown [10 YR 6/2]. End scraper, 1 of, banded brownish grey [5 YR 4/1] and light brownish grey [5 YR 6/1].

**94/61 9.1B/ 1.5W**

**Chert**

- a Large Chunk, dark grey, N 3, rough fracture.
- b Medium Flakes, 4 of, medium dark grey [N 4], pale alteration, rough fracture - 2 with traces of 'iron pan'.
- c Small Flake, 1 of, pale grey.

**'Red chert'**

- d Chunks, 1 medium, brownish black [5 YR 1/1].

**94/62a 9.3B/0.5W**

**Chert**

- a Large Flake, medium grey [N 5], rough fracture.
- b Medium Flakes, 5 of, medium grey [N 5], pale alteration, rough fracture - 2 with traces of 'iron pan'.
- c Flake, 1 of, olive grey [5 Y 4/1] with brownish grey [5 YR 4/1] mottling
- d Small Flakes, 3 of, pale grey, various types.

**94/62b 9.3B/0.5W**

**Flint**

Flake, small, light brownish grey [5 YR 6/1].

**Chert**

- a Large Flakes, 4 of, medium dark grey [N 4], some pale alteration, rough fracture.
- b Chunk, 1 of, olive grey [5 Y 4/1], smooth fracture.
- c Medium Flakes, 20 of, medium grey [N 5], pale alteration, rough fracture - 1 with traces of 'iron pan'.
- d Flakes, 8 of, olive grey [5 Y 4/1] and dark greenish grey [5 GY 4/1], some with brownish grey [5 YR 4/1] mottling, smooth fracture.
- e Small Flakes, 11 of, pale grey, various types.

**'Grey chert'**

f Chunk, medium, light brownish grey [5 YR 6/1].

**'Red chert'**

g Chunk, large, perhaps a core, 1 of, flakes, 2 of, 1 large, 1 medium, dusky brown [5 YR 2/2], one with part dark greenish gray.

**94/63 9.3B/1.5W**

**Pitchstone**

Flake, small, dark grey [N 3].

**Chert**

a Large Flake, 1 of, dark grey [N 3], bladelike, some pale alteration, rough fracture.

b Chunks, 2 of, dark greenish grey [5 GY 4/1], smooth fracture.

c Medium Flakes, 13 of, medium grey [N 5], one with pale alteration, rough fracture - 1 with traces of 'iron pan'.

d Flakes, 9 of, olive grey [5 Y 4/1] and dark greenish grey [5 GY 4/1], 5 with brownish grey [5 YR 4/1] mottling, smooth fracture.

e Small Flakes, 6 of, pale grey, various types.

**'Grey chert'**

f Flake, 1 of, medium, light brownish grey [5 YR 6/1], smooth fracture.

**94/64 10.2B/0.8E 'In till'**

**Pottery**

Sherd, 1 of, from everted, thickened rim of large vessel; fabric light brown [5 YR 6/4] - fabric - medium sand grade. Blackened on top surface of rim - inner surface of rim not preserved.

**94/65 10.7B/ 0.0 In soil**

**Flint**

Flakes, 2 of, small, light brownish grey [5 YR 6/1].

**Pitchstone**

Flake, small, light brownish grey [5 YR 6/1].

**Chert**

a Microlith, 16mm long, medium grey [N 5].

b Large Flakes and chunks, 4 of, dark grey [N 3] and medium dark grey [N 4], most with some pale alteration, rough fracture.

c Flake, 1 of, chunk 1, of, dark greenish grey [5 GY 4/1], smooth fracture - one with pale altered edge shows radiolarians.

d Medium Flakes and chunks, 18 of, medium grey [N 5] and medium dark grey [N 4], some with pale alteration, rough fracture - 1 with traces of 'iron pan'.

e Flakes, 7 of, olive grey [5 Y 4/1] and dark greenish grey [5 GY 4/1], 2 with brownish grey [5 YR 4/1] mottling, smooth fracture. 3 with traces of 'iron pan'.

f Small Flakes, 11 of, pale grey, various types.

**'Grey chert'**

- g Flake, 2 of, medium, light brownish grey [5 YR 6/1], smooth fracture.

**94/66 10.7B/ 1.0E In soil**

**Chert**

- a Large Flakes and chunks, 6 of, dark grey [N 3] and medium dark grey [N 4], most with some pale alteration showing radiolarians, rough fracture. Three show traces of 'iron pan'.
- b Chunks, 5 of, dark greenish grey [5 GY 4/1], 3 with brownish grey mottling - smooth fracture.
- c Medium Flakes and chunks, 7 of, medium grey [N 5] and medium dark grey [N 4], some with pale alteration, rough fracture.
- d Flakes, 7 of, olive grey [5 Y 4/1] and dark greenish grey [5 GY 4/1], 2 with brownish grey [5 YR 4/1] mottling, smooth fracture. One show traces of 'iron pan'.
- e Small Flakes, 24 of, various types.

**'Grey chert'**

- f Flake, 1 of, medium, light brownish grey [5 YR 6/1], smooth fracture.

**94/67 10.7B/ 1.0W In soil**

**Flint**

Flakes, 2 of, light brownish grey [5 YR 6/1].

**Chert**

- a Microlith, 14mm long, dark greenish grey [5 GY 4/1] with brownish grey [5 YR 4/1] mottling,
- b Large Chunk, 1 of, medium dark grey [N 4] with pale alteration showing radiolarians, rough fracture.
- c Medium Flakes and chunks, 9 of, medium grey [N 5] and medium dark grey [N 4], some with pale alteration, rough fracture. One show traces of

**'iron pan'**

- d Flakes, 7 of, dark greenish grey [5 GY 4/1], with brownish grey [5 YR 4/1] mottling, smooth fracture.
- e Small Flakes, 4 of, various types.

**94/68 12.7B/ 0.0W In drain.**

**Agate**

Flake, piercer, 1 of, light brownish grey [5 YR 6/1] and moderate red [5 R 5/4].

**Chert**

- a Medium Flakes, 2 of, dark grey [N 4], some with pale alteration, rough fracture.



**94/69 12.7B/ 1.5W In drain.**

**Chert**

- a Large Chunk, 1 of, medium grey [N 5], some pale alteration, rough fracture.

**94/70 7.4B/ 0.3W F1**

**Pottery**

Sherd, 1 of, up to 12.5mm thick, from side of large vessel, c 250mm in diameter; fabric greyish orange pink [5 YR 7/2], moderate brown [5 YR 4/4] on the exterior, greyish brown [5 YR 3/2] on the interior, sand grade with a few rounded rock fragments up to 3mm long.

**94/71 7.4B/ 0.3W F1 Scatter**

**Pottery**

Sherds, 4 of, up to 10mm thick, from side of large vessel, fabric moderate brown [5 YR 4/4], one is greyish brown [5 YR 3/2] on the interior, sand grade.

**Chert**

- a Medium Flake, 1 of, medium grey [N 5], rough fracture, traces of 'iron pan'.

**94/72 7.4B/ 0.3W Centre furrow, F1 - In situ**

**Chert**

- a Medium Flakes, 3 of, medium grey [N 5], rough fracture, one with traces of 'iron pan'.
- b Small Flakes, 4 of, various types.

**94/73 7.4B/ 0.3W Centre furrow, F1 - In situ**

**Pottery**

Sherd, 1 of, up to 10mm thick, from side of large vessel, c 250mm in diameter; fabric greyish brown [5 YR 3/2], moderate brown [5 YR 4/4] on the exterior, partly covered with black residue on interior; greyish brown, sand grade with abundant rounded rock fragments up to 3mm long.

**94/74 F2 - In situ**

**Chert**

- a Large Chunk, 1 of, medium brownish grey [5 YR 5/1], rough fracture.
- b Medium Flake, 1 of, dark grey [N 3], rough fracture.
- c Small Flakes, 2 of, brownish grey.

### **94/75 F3**

#### **Flint**

Flake, 1 of, light brownish grey [5 YR 6/1].

#### **Pottery**

Sherds, 4 of, up to 10mm thick, small, from side of large vessel, fabric moderate brown [5 YR 4/4], one is greyish brown [5 YR 3/2], sand grade.

### **94/76 (2011) Grids 10 and 11/S1**

#### **Flint**

Microlith, 1 of, 26mm long, light brownish grey [5 YR 6/1]. Flakes, 3 of, small, light brownish grey [5 YR 6/1].

#### **Chert**

- a Core, dark greenish grey [5 GY 4/1] with thin black veins.
- b Large Chunks, 5 of, medium grey [N 5] and dark grey [N 3] - 3 with pale alteration showing radiolarians, rough fracture.
- c Flakes and chunks, 4 of, dark greenish grey [5 GY 4/1], with brownish grey [5 YR 4/1] mottling, 1 probably a scraper, smooth fracture.
- d Medium Flakes and chunks, 13 of, medium grey [N 5] and medium dark grey [N 4], some with pale alteration, rough fracture.
- e Flakes, 12 of, dark greenish grey [5 GY 4/1], 8 with brownish grey [5 YR 4/1] mottling, smooth fracture.
- f Small Flakes, 17 of, various types.

#### **'Grey chert'**

- g Chunks, 1 large, 1 medium, light brownish grey [5 YR 6/1], rough fracture.

### **94/77 (2011) Grids 10 and 11/N1**

#### **Flint**

Microliths, 3 of, up to 13mm long, light brownish grey [5 YR 6/1].

#### **Pitchstone**

Chunk, 1 of, dark grey with close-set, pale flat-lamination and 1 small flake.

#### **Chert**

- a Piercer, dark greenish grey [5 GY 4/1] with brownish grey [5 YR 4/1] mottling.
- b Large Chunks, 9 of, medium grey [N 5] and dark grey [N 3] - 3 with pale alteration showing radiolarians, rough fracture.
- c Medium Flakes and chunks, 24 of, medium grey [N 5] and medium dark grey [N 4], some with pale alteration, rough fracture.
- d Flake, 1 of, dark greenish grey [5 GY 4/1], smooth fracture.
- e Small Flakes, 13 of, various types.

**'Grey chert'**

f Flakes, 1 large, 1 medium, light brownish grey [5 YR 6/1], rough fracture.

**'Red chert'**

g Chunk, 1 of, mostly brownish grey [5 YR 4/1].with some dark greenish grey [5 GY 4/1], smooth fracture

**94/78 (2011) Grids 12/N 2-3**

**Chert**

- a Microliths, 2 of, 14mm long, greyish red [5 R 4/2] is perhaps flint; the other, 10mm long, is medium grey [N 5].
- b Large Chunks, 2 of, medium grey [N 5], with pale alteration showing radiolarians, rough fracture.
- c Medium Flakes and chunks, 8 of, medium grey [N 5], some with pale alteration, rough fracture.
- d Flake, 1 of, dark greenish grey [5 GY 4/1], smooth fracture.
- e Small Flakes, 6 of, various types.

**94/79 (2010) South furrow and surface**

**Pitchstone**

Flakes, 2 of, dark grey [N 3].

**Chert**

- a Scraper, 1 of, medium grey [N 5], rough fracture.
- b Medium Flakes, 2 of, medium grey [N 5], rough fracture.

**'Grey chert'**

c Flake, 1 of, medium, light brownish grey [5 YR 6/1], smooth fracture.

**94/80 (2010) Centre furrow and surface**

**Flint**

Chunk, 1 of, pale brown [5 YR 5/2] with cortex, and flake, 1 of, medium, pinkish grey [5 YR 8/1].

**Pitchstone**

Flakes, 5 of, dark grey [N 3].

**Pottery**

Sherd, 1 of, from everted rim, fabric greyish brown [5 YR 3/2], moderate brown [5 YR 4/4] on upper surface of rim, sand grade with abundant angular rock fragments.

**Chert**

- a Scraper, 1 of, medium grey [N 5], rough fracture.
- b Large Chunks, 5 of, medium grey [N 5] and dark grey [N 3] - 3 with pale alteration showing radiolarians, rough fracture. One has traces of 'iron pan'.
- c Chunks, 3 of, 1 possibly a core, dark greenish grey [5 GY 4/1], smooth fracture.
- d Medium Flakes, 22 of, medium grey [N 5], rough fracture.
- e Flakes, 11 of, olive grey [5 Y 4/1 and dark greenish grey [5 GY 4/1], 6 with brownish grey [5 YR 4/1] mottling, smooth fracture.
- f Small Flakes, 7 of, various types.

**'Grey chert'**

- g Flake, 1 of, medium, light brownish grey [5 YR 6/1], smooth fracture.

**'Banded chert'**

- h Chunk, 1 of, large, dark grey [N 3], mostly altered to pale yellowish brown [10 YR 6/2], traces of fine lamination, smooth fracture.

**94/81 (2010) North furrow and surface****Flint**

Flakes, 3 of, small, light brownish grey [5 YR 6/1].

**Siltstone**

Flake, large, perhaps siltstone - baked near an igneous intrusion, greyish orange pink [5 YR 7/2] and light brown [5 YR 6/4].

**Pitchstone**

Flakes, 2 of, small, dark grey [N 3].

**Pottery**

Sherds, 2 of, fabric greyish brown [5 YR 3/2], sand grade with angular rock fragments.

**Chert**

- a Large Chunks, 3 of, medium grey [N 5] and dark grey [N 3] - 3 with pale alteration showing radiolarians, rough fracture.
- b Chunk, possibly a core, and 2 flakes - dark greenish grey [5 GY 4/1], One of the flakes has brownish grey [5 YR 4/1] mottling pale alteration, - smooth fracture.
- c Medium Flakes, 8 of, medium grey [N 5], 2 with pale alteration, rough fracture.
- d Flakes, 2 of, dark greenish grey [5 GY 4/1], smooth fracture.
- e Small Flakes, 15 of, various types.

**'Grey chert'**

- f Flake, 1 of, medium, light brownish grey [5 YR 6/1], smooth fracture.

## **94/82 (2010) Random - not plotted**

### **Flint**

Flake, 1 of, small, light brownish grey [5 YR 6/1].

### **Pitchstone**

Flake, 1 of, small, dark grey [N 3].

### **Quartz**

Crystal.

### **Pottery**

Sherds, 2 of, fabric greyish brown [5 YR 3/2], sand grade with angular rock fragments.

### **Chert**

- a Large Chunks, 3 of, medium dark grey [N 4] - with pale alteration showing radiolarians, rough fracture.
- b Medium Chunks and flakes, 44 of, medium grey [N 5], 2 with pale alteration, rough fracture.
- c Flakes, 13 of, olive grey [5 Y 4/1], smooth fracture.
- d Small Flakes, 30 of, various types.

### **'Grey chert'**

- e Chunk, 1 of, large, and flakes, 5 of, medium, light brownish grey [5 YR 6/1].

### **'Red chert'**

- f Chunk, 1 of, and flakes, 2 of, medium, brownish grey [5 YR 4/1].with some dark greenish grey [5 GY 4/1], smooth fracture.

## **94/83 (2011) Spoil**

### **Flint**

Flake, 1 of, bladelike, light brownish grey [5 YR 6/1].

### **Pitchstone**

Flake, 1 of, small, dark grey [N 3].

### **Pottery**

Sherd, 1 of, fabric greyish brown [5 YR 3/2], sand grade with angular rock fragments.

### **Chert**

- a Microlith, 1 of and one possible, dark grey.
- b Scraper, medium grey [N 5].
- c Large Chunks and flakes, 6 of, medium dark grey [N 4] and dark grey [N 3] - some with pale alteration showing radiolarians, rough fracture.
- d Medium Chunks and flakes, 32 of, medium grey [N 5] and medium dark grey [N 4], some with pale alteration, rough fracture.
- e Flakes, 5 of, olive grey [5 Y 4/1], smooth fracture.
- f Small Flakes, 12 of, various types.



**'Grey chert'**

g Flake, 1 of, medium, light brownish grey [5 YR 6/1].

**'Red chert'**

h Flakes, 2 of, medium, brownish grey [5 YR 4/1], smooth fracture.

**Near Site 94**

**94/84 2010 [NS 95913 10181]**

**Chert**

a Large Chunk, 1 of, medium dark grey [N 4], with pale alteration - a few radiolarians visible, rough fracture.

94/85 2010 [NS 95916 10146]

**Chert**

a Medium Flakes, 2 of, medium grey [N 5], rough fracture.

**94/86 2010 [NS 95917 10172]**

**Chert**

a Large Flake, 1 of, elongated, brownish black [5 YR 2/1], rough fracture.

**94/87 2010 [NS 95922 10164]**

**Chert**

a Medium Chunk, 1 of; flakes, 2 of, medium dark grey [N 4], rough fracture.

**94/88 2010 [NS 95922 10680]**

**'Banded Chert'**

a Large Chunk, 1 of; This specimen consists, in its upper part, of silt grade medium dark grey [N 4] chert with rough fracture and pale alteration showing abundant radiolarians. This rests upon, and penetrates shallow fissures in, the surface of a layer of dark greenish grey [5 GY 4/1] chert with brownish grey [5 YR 4/1] mottling and a smooth fracture.

**94/89 2010 [NS 95923 10145]**

**'Red Chert'**

a Medium Flake, 2 of, brownish black [5 YR 2/1], smooth fracture.

**94/90 2010 [NS 95923 10165]**

**Chert**

a Medium Flake, 1 of, olive grey [5 Y 4/1], smooth fracture.

**94/91 2010 [NS 95930 10149]**

**‘Grey chert’**

- a Medium Flake, 1 of, light brownish grey [5 YR 6/1], rough fracture. Seems a water-rounded pebble.

**‘Red chert’**

- b Medium Flake, 1 of, brownish grey [5 YR 4/1] mainly replacing dark greenish grey [5 GY 4/1], smooth fracture.

**94/92 2010 [NS 95941 10171]**

**Chert**

- a Large Chunk, 1 of, dark grey [N 3] with pale alteration, rough fracture - radiolarians.

**94/93 2010 [NS 95946 10146]**

**Chert**

- a Medium Chunk, 1 of, dark greenish grey [5 GY 4/1] with pale alteration, smooth fracture - a few radiolarians visible.

<sup>1</sup> ‘In till’ - denotes artefacts that have apparently been trodden into the upper part of the glacial till.

<sup>2</sup> The ‘iron pan’ tends to form in the uppermost part of the glacial till and the lower part of the overlying soil.

## Site No 95

Ian Paterson & Tam Ward

### Introduction

Site No 95                      315m OD

73                      53                      **Site No 95**                      Chert 11of, flint 2of, 1 tool                      95857 10083

*Circa 4 metres of furrow trowelling produced no further finds*

## Site No 96

Ian Paterson & Tam Ward

### Introduction

57 40 **Site No 96** Chert 1of + fireplace 95811 10120 315m OD

NGR @ 0 on the Site baseline was NS 95619 10560

The stone setting of the fire place was excavated for distance of 1 metre above and below it in the furrow; a charcoal enriched soil sample was retrieved, but no further finds were recovered. The charcoal amounted to 18 grammes of hand picked material above 1mm in size; a 0.3mm flot was not taken. The burning must have been of short duration as the grit and small stones within the soil sample were not altered by heat, however the actual hearth stones were slightly discoloured by the heating effect (PI 1).



Plate 1

## Site No 97

**Ian Paterson & Tam Ward**

### Introduction

Site No 97 43 315m OD

Flint 3of (1 core), Chert 2 of 95828 10083 + burnt stone

The furrow was excavated for a distance of c 4m and a further 6 pieces of chert and one of flint were recovered.

## Site No 98 and 98b

Ian Paterson & Tam Ward

### Introduction

#### Site No 98 & 98b 315m OD

223      **Site No 98**      Burnt mound deposit      NS 95628 10391

A deposit of reddened stone and charcoal up to 150 – 200mm in depth spread for 6m in a sloping furrow. The area is surrounded in boggy rush growth and 5m down the furrow to the east is another separate deposit (98 b) and which measures about 4m long in the furrow. Adjacent furrows showed only occasional burnt stones. These two deposits are interpreted as undeveloped burnt mound activity.

The upper site was sampled at the NGR given here and from a 10litre sample of the deposit the following was recovered:

Burnt mound	58g	1mm> Hand Picked
Burnt mound	259g	+ much grit
Burnt mound	n/a	0.3mm flot

Further down and a short distance to the east are the visible burnt mounds which were recorded in the 4th Interim Report on Daer (Ward, 2002) and given here for the sake of completeness:

#### **Site No 27. Burnt mounds (2 of)      NS 95640 10420      310m OD**

On the lower north east flank of Coom Rig there are two burnt mounds lying about 10m apart. The larger of the two is dome shaped and measures 4.5m by 3.5m by 0.75m high. It lies in a gully with the spring on the south side. 10m upslope there is a large mound of raised bog.

10m south of the burnt mound is another which measures 3m in diameter by 0.3m high.



## Discussion

The discovery on this project of several deposits of burnt stone and charcoal, and which clearly represent more than a simple fireplaces, parallel similar discoveries by BAG elsewhere in South Lanarkshire and Peeblesshire. These deposits are most likely the product of the activity involving the practises around burnt mounds, however, unlike the more visible sites which develop into mounds of varying sizes, from those which are only just detectable to those which can be seen from considerable distances, these activity sites appear to have been abandoned before the deposits accrued enough to create a visible feature above the land surface.

They are nevertheless important find spots which can skew the story of burnt mounds if not discovered; often several locations in close proximity have been active, although whether contemporaneously or spread over a long time could only be ascertained by radio carbon dating.



## Site No 99

Ian Paterson & Tam Ward

### Introduction

The site was originally recorded as:

224 153 **Site No 99** Chert, flint + 4of micro's NS 95578 10535

The site lies only 3m from the present south scarp of the Smithwood Burn on the lower east flank of Coom Rig at 310m OD.

The NGR at the corner of grid 6/N5 and 6/N6 = NS 95574 10542 (Fig 1)

This location was discovered almost by accident as it was heavily infested with rush growth and peat cover, the former being the result of an old hill drain which cut through the site (Fig's 1 & 2). It lies between Sites 102 and 123 and on the same furrow lines (Fig 3), and because of the proximity to the other sites they may be associated, expert examination of the finds may help to support or reject that theory.

Charcoal spreads were found in the following grids and the quantity of charcoal from each is given below:

13/S/1 15g Hand picked

8/N/4 13g + grit

No features were cut into the till at this site nor was there any trace of burning on the ground. However, the swathe of the old hill drain certainly penetrated into the till along its route and this may have eradicated features. Certainly finds must have been displaced along the drain line and some objects were retrieved from the ancient upcast from the drain.

The location was a busy one with a large percentage of microliths being found however it is difficult to find any meaningful pattern regarding them although there was a slightly larger concentration (22 of) in the four grids 12/N/1&2 and 13N/1&2 where high numbers of lithic were also found.

This site seems to represent only Mesolithic activity as no finds attributable to the Neolithic have been recognised. The illustrations of some of the microliths are given here to illustrate what appears to be a variety of types.

The assemblage from Site 99 should certainly be studied along with those of Sites 102 and 123 for possibly affinities.



**Excavation finds  
by  
Ian Paterson**

## Comment

The main excavation covered 61 square metres. Approximately 5140 lithic fragments were recovered. Of these, more than 1000 were small – that is, less than 10mm in length - and, as their identification was in many cases uncertain, they have not been included in the calculations that follow.

The assemblage from the site is composed predominantly of chert. Of the 3650 identifiable chert fragments, almost 60% consisted of the rough-fracturing dark grey type; with about 27% of the total being the smooth-fracturing greenish-grey variant. About 11% of the total was 'grey' chert and there was 3% of 'red' chert..

A total of 169 flint fragments were recovered. They occur in small numbers in all but 17 of the grids excavated, and comprise less than 4.5% of the total lithic assemblage. Overall, the ratio of chert to flint was about 22 to 1.

At least 79 microliths were retrieved – of which only 8 were of flint.

No pitchstone, haematite or pottery was found on the site.

### Site 99/5/N3 (2011)

#### Flint

1 small flake, light brownish grey [5 YR 6/1].

#### Chert.

- a Pointed flakes, 2 of, medium dark grey [N 4], rough fracture.
- b Flake, small, with retouch, dark greenish grey [5 GY 4/1] - smooth fracture.
- c Large Chunks, 2 of, medium dark grey [N 4] but largely altered to 'grey chert', rough fracture, abundant radiolarians.
- d Chunk, 1 of, dark greenish grey [5 GY 4/1], smooth fracture
- e Chunk, 1 of, dark greenish grey [5 GY 4/1] with brown mottling, smooth fracture.
- f Medium Flakes, 16 of, medium and medium dark grey [N 4-5], rough fracture.
- g Flakes, 14 of, dark greenish grey [5 GY 4/1], smooth fracture, 3 with dark brown mottling.
- h Small Flakes, 10 of, various types, including 'grey' and 1 'red'. chert.

#### 'Grey chert'

- j Flakes, medium, 4 of, rough fracture, brownish grey [5 YR 4/1] and light brownish grey. [5 YR 6/1].

## **Site 99/5/N4 (2011)**

### **Flint**

Flakes, 4 of, light brownish grey [5 YR 6/1].

### **Chert.**

- a Microliths, 9 of, up to 21mm long, medium grey [N 5] - 1 is 'grey chert'.
- b Large Chunks, 4 of, medium dark grey [N 4], 2 with pale alteration, rough fracture, radiolarians.
- c Chunks, 2 of, dark grey [N 3] and medium dark grey [N 4], traces of lamination, rough fracture, pale alteration, radiolarians.
- d Chunks, 4 of, dark greenish grey [5 GY 4/1], 1 with pale alteration, smooth fracture
- e Medium Flakes, 50 of, medium and medium dark grey [N 4-5], rough fracture.
- f Flakes, 22 of, dark greenish grey [5 GY 4/1], smooth fracture, 4 with dark brown mottling.
- g Small Flakes, 64 of, all of above types.

### **'Grey chert'**

- h Flakes, 1 large, medium, 46 of, rough and smooth fracture, brownish grey [5 YR 4/1] and light brownish grey.[5 YR 6/1].

## **Site 99/6/N3 (2011)**

### **Chert.**

- a Microlith, 1 of, dark grey, 16mm long.
- b Large Chunks, 2 of, medium dark grey [N 4], rough fracture.
- c Chunks, 2 of, dark greenish grey [5 GY 4/1], one with slight brown mottling - smooth fracture
- d Medium Flakes, 11 of, medium and medium dark grey [N 4-5], rough fracture.
- e Flakes, 10 of, dark greenish grey [5 GY 4/1], smooth fracture, 3 with dark brown mottling.
- f Small Flakes, 14 of, various types.

### **'Grey chert'**

- g Flakes, medium, 2 of, light brownish grey [5 YR 6/1], rough fracture.

## Site 99/6/N4 (2011)

### Flint

Chunk, dark yellowish brown [10 YR 4/2] with pale cortex and 2 flakes, light brownish grey [5 YR 6/1].

### Chert.

- a Microliths, 3 of, up to 18mm long, medium grey [N 5].
- b Large Chunks, 8 of, medium dark grey [N 4], rough fracture - 2 with pale altered zone may be from same original block.
- c Medium Flakes and chunks, 29 of, medium and medium dark grey [N 4-5], rough fracture.
- d Flakes and chunks, 15 of, dark greenish grey [5 GY 4/1], smooth fracture.
- e Small Flakes, 28 of, all types.

### 'Grey chert'

- f Flakes and chunks, 9 of, medium, rough and smooth fracture, brownish grey [5 YR 4/1] and light brownish grey [5 YR 6/1]. **['Red chert']**
- g Flakes and chunks, 3 large, 5 medium. Three conjoin but all were almost certainly struck from a single block which was mainly dark reddish brown [10 R 3/4] but passed by transition into a zone that is dark greenish grey [5 GY 4/1]. This is bordered, with sharp transition, by a zone, up to 13mm thick, of 'grey chert' with radiolarians.
- h Flakes, 5 of, dark greenish grey [5 GY 4/1] with brown mottling, smooth fracture.

## Site 99/6/N6 (2011)

### Flint

Flake, elongated, 1 of, 24mm long light brownish grey [5 YR 6/1].

### Chert.

- a Microlith, 1 of, 18mm long, medium grey [N 5], and 2 fragments.
- b Large Chunks, 3 of, dark grey [N 3], rough fracture.
- c Chunks, 2 of, both are probably cores, dark greenish grey [5 GY 4/1], 1 with pale alteration, smooth fracture
- d Medium Flakes and chunks, 23 of, medium and medium dark grey [N 4-5], rough fracture.
- e Flakes and chunks, 6 of, dark greenish grey [5 GY 4/1], smooth fracture.
- f Small Flakes, 13 of, all of above types.

### 'Grey chert'

- g Flakes and chunks, 1 large perhaps a core - with some brown mottling, 4 medium, rough and smooth fracture, brownish grey [5 YR 4/1] and light brownish grey [5 YR 6/1].

## **Site 99/7/S1 (2011)**

### **Flint**

1 large flake, light brownish grey [5 YR 6/1] with paler spotting.

### **Chert.**

- a Microlith, 2 of, one is 18mm long, medium dark grey [N 4].
- b Large Chunks, 2 of, medium dark grey [N 4] but largely altered to 'grey chert', rough fracture, abundant radiolarians.
- c Chunks, 2 of, dark greenish grey [5 GY 4/1], with brown mottling, smooth fracture.
- d Medium Flakes, 5 of, medium and medium dark grey [N 4-5], rough fracture.
- e Flakes, 7 of, dark greenish grey [5 GY 4/1], smooth fracture, 1 with dark brown mottling.
- f Flake, 1 of, dark brownish black [5 YR 2/1], smooth fracture,
- g Small Flakes, 10 of, various types.

### **'Grey chert'**

- j Chunk, 1 large, 1 medium, rough fracture, brownish grey.[5 YR 6/1].

## **Site 99/7/S2 (2011)**

### **Chert.**

- a Large Chunk, 1 of, medium dark grey [N 4], rough fracture.
- b Medium Flakes, 3 of, medium dark grey [N 4], rough fracture.
- c Flakes, 4 of, dark greenish grey [5 GY 4/1], smooth fracture.
- d Small Flakes, 2 of, pale grey.

### **'Grey chert'**

- e Flakes, 2 of, medium, rough fracture, light brownish grey.

## **Site 99/7/N1 (2011)**

### **Flint**

2 flakes, pinkish grey [5 YR 8/1].

### **Chert.**

- a Microlith, 1 of, 21mm long, medium dark grey [N 4].
- b Medium Flakes, 8 of, medium dark grey [N 4], rough fracture.
- c Flakes, 5 of, dark greenish grey [5 GY 4/1], smooth fracture.
- d Small Flakes, 6 of, various types

### **'Grey chert'**

- e Flakes, 1 of, medium, rough fracture, light brownish grey.

## Site 99/7/N3 (2011)

### Flint

Microliths, 3 of, up to 15mm long, dark yellowish brown[10 YR 4/2]; Flakes 5 of, 4 pinkish grey [5 YR 8/1], 1, with cortex, dark yellowish brown[10 YR 4/2];

### Chert.

- a Microliths, 3 of, up to 12mm long, medium dark grey [N 4].
- b Large Chunks and flakes, 4 of, 2 dark grey [N 3], 3 medium dark grey [N 4], rough fracture.
- c Chunks, 3 of - at least 2 are cores, dark greenish grey [5 GY 4/1], smooth fracture, pale alteration.
- d Chunk, 1 of, dark greenish grey [5 GY 4/1] but mainly dark greyish red [5 R 3/2], smooth fracture.
- e Medium Flakes, 27 of, medium dark grey [N 4], rough fracture - 2 with pale alteration show abundant radiolarians.
- f Flakes, 21 of, 3 are long, narrow crested - dark greenish grey [5 GY 4/1], smooth fracture.
- g Flakes, 17 of, 5 are long, narrow, crested, olive black [5 Y 2/1] - some are part dark greenish grey [5 GY 4/1], smooth fracture. [**'Red chert'**]
- h Small Flakes, 22 of, various types

### 'Grey chert'

- j Chunks and flakes, 3 large - 1 a core, 5 medium, mostly smooth fracture, light brownish grey.

## Site 99/7/N4 (2011)

### Flint

Flakes 2 of, pinkish grey [5 YR 8/].

### Chert.

- a Large Chunk, 1 of, dark grey [N 3], rough fracture.
- b Chunk, 1 of - dark greenish grey [5 GY 4/1] banded with blackish red [5 R 2/2], smooth fracture.
- c Medium Flakes, 23 of, medium dark grey [N 4], rough fracture - 1 with pale alteration has abundant radiolarians.
- d Flakes, 2 of, dark greenish grey [5 GY 4/1], smooth fracture.
- e Flakes, 5 of, olive black [5 Y 2/1] - some are part dark greenish grey [5 GY 4/1], smooth fracture.
- f Flakes, 3 of, blackish red [5 R 2/2], smooth fracture. [**'Red chert'**]
- g Small Flakes, 16 of, various types

### 'Grey chert'

- h Chunks and flakes, 1 large - 1 a core, 5 medium, mostly rough fracture, light brownish grey.

## Site 99/7/N5 (2011)

### Flint

Microlith, 1 of, 11mm long, pinkish grey [5 YR 8/].

### Chert.

- a Microlith, 14mm long, medium grey [N 5].
- b Large Chunks, 5 of, dark grey [N 3], rough fracture.
- c Chunk, 1 of - dark greenish grey [5 GY 4/1], smooth fracture.
- d Chunks, 7 of - moderate yellowish brown [5 YR 5/4], rough fracture -radiolarians. Note - may all be from one large chunk.
- e Medium Flakes, 30 of, medium dark grey [N 4], rough fracture.
- f Flakes, 7 of, dark greenish grey [5 GY 4/1], smooth fracture.
- g Flakes, 6 of, dark greenish grey [5 GY 4/1] with dusky brown [5 YR 2/2] mottling, smooth fracture.
- h Flakes, 5 of, greyish brown [5 YR 3/2] and dusky brown [5 YR 2/2], smooth fracture  
**['Red chert']**
- j Small. Flakes, 23 of, various types

### Grey chert'

- k Chunk, large, light brownish grey with traces of darker lamination. Abundant radiolarians
- l Chunks and flakes, 7 of, medium, light brownish grey, rough and smooth fracture.
- m Flakes, 2 of, medium, light brownish grey with greyish red [5 R 4/2] mottling, smooth fracture.
- n Flakes, 2 of, medium, pinkish grey [5 YR 8/], smooth fracture, one with traces of paler lamination has radiolarians.

## Site 99/7/N6 (2011)

### Flint

Flakes, 3 of, small, pinkish grey [5 YR 8/].

### Chert.

- a Microlith, 16mm long, medium grey [N 5].
- b Core, 1 of, dark greenish grey [5 GY 4/1] with slight brown mottling, smooth fracture.
- c Large Chunks, 4 of, dark grey [N 3] and medium dark grey [N 4], rough fracture. One with pale alteration - radiolarians.
- d Flake, perhaps a scraper, 1 of - olive grey [5 Y 4/1], smooth fracture.
- e Medium Flakes, 14 of, medium dark grey [N 4 and medium grey [N 5], rough fracture.
- f Flakes, 7 of, olive grey [5 Y 4/1], smooth fracture.
- g Small Flakes, 30 of, various types

**'Grey chert'**

- h Chunks and flakes, 2 large with abundant radiolarians., 4 medium, light brownish grey. [5 YR 6/1]. **['Red chert']**
- j Flake, large, 1 of, dark greenish grey [5 GY 4/1] passing into dark reddish brown [10 R 3/4], smooth fracture.
- k Flakes, medium, 2 of, dark reddish brown [10 R 3/4], smooth fracture.

**'Banded chert'**

- l Flake, large, 1 of, dark grey [N 3] with paler, coarser-grained band with abundant radiolarians, rough fracture.
- m Flake, large, 1 of, dark grey [N 3] with paler, coarser-grained laminae, passing into dark reddish brown [10 R 3/4], smooth fracture. Radiolarians.

**Site 99/8/S1 [2011]****Flint**

1 flake, brownish grey [5 YR 4/1], with cortex.

**Chert.**

- a Large Chunk, 1 of, medium dark grey [N 4], rough fracture.
- b Chunks, 2 of, dark greenish grey [5 GY 4/1], smooth fracture. Pale alteration - radiolarians.
- c Chunks, 2 of, greenish black [5 G 2/1], smooth fracture. Pale alteration - radiolarians.
- d Medium Flakes, 4 of, medium dark grey to medium grey [N 4-5], rough fracture.
- e Flakes, 5 of, dark greenish grey [5 GY 4/1], smooth fracture.
- f Flakes, 4 of, dark greenish grey [5 GY 4/1], with dark brown mottling, smooth fracture.
- g Flakes, 2 of, brownish black, [5 YR 2/1], smooth fracture. **['Red chert']**
- h Small Flakes, 7 of, various types.

**'Grey chert'**

- j Flakes and chunks, medium, 3 of, light brownish grey, 2 with smooth fracture.

**Site 99/8/S2****Flint**

Microlith, pinkish grey [5 YR 8/1] - 17.5mm long and 2 flakes, light brownish grey [5 YR 6/1].

**Chert.**

- a Microliths, 2 of, in medium dark grey [N 4]. One, 24mm long, has retouch along both sides; the other is 12mm long.
- b Cores, 2 of, dark grey [N 3], rough fracture. Pale alteration with radiolarians.
- c Large Chunks, 4 of, and 2 flakes; dark greenish grey [5 GY 4/1], smooth fracture. Two with pale alteration show radiolarians.
- d Medium Chunks and flakes, 13 of, medium dark grey [N 4].

- e Chunks and flakes, 13 of, medium greenish grey [5 GY 4/1], smooth fracture; 4 have brown mottling.
  - f Small Flakes, 15 of, mostly medium greenish grey [5 GY 4/1], smooth fracture.
- 'Grey chert'**
- g Medium Flakes, 1 of, light brownish grey.

### **Site 99/8/S3**

#### **Flint**

Flakes 7 of; 2 pinkish grey [5 YR 8/1], 5 light brownish grey [5 YR 6/1].

#### **Chert**

- a Large Chunks, 2 of, medium grey [N 5] rough fracture, with pale alteration showing radiolarians.
- b Chunk, 1 of, dark greenish grey [5 GY 4/1], smooth fracture.
- c Medium Chunks and flakes, 23 of, medium dark grey to medium grey [N 4-5], rough fracture.
- d Chunks and flakes, 24 of, dark greenish grey [5 GY 4/1], smooth fracture; 6 have brown mottling.
- e Small Flakes, 16 of, various types.

#### **'Grey chert'**

- f Medium Flakes, 2 of, light brownish grey [5 YR 6/1].

### **Site 99/8/N1**

#### **Flint**

Flakes 4 of; light brownish grey [5 YR 6/1].

#### **Chert.**

- a Microlith, 1 of, in medium dark grey [N 4].
- b Large Chunks, 6 of, medium dark grey [N 4], rough fracture. Pale alteration showing radiolarians.
- c Chunk, 1 of, dark greenish grey [5 GY 4/1] and brown mottled, smooth fracture. Pale alteration showing radiolarians.
- d Chunk, 1 of, brownish black [5 YR 2/1], smooth fracture. Pale alteration showing radiolarians. [**'Red chert'**]
- e Medium Chunks and flakes, 21 of, medium dark grey to medium grey [N 4-5], rough fracture.
- f Chunks and flakes, 19 of, dark greenish grey [5 GY 4/1], smooth fracture.
- g Flakes, 3 of, brownish black [5 YR 2/1], smooth fracture. [**'Red chert'**]
- h Small Flakes, 21 of, all of above types.

#### **'Grey chert'**

- j Flakes, 3 of, medium, light brownish grey, 2 with smooth fracture.



## Site 99/8/N3 (2011)

### Chert

- a Large Elongated flake, 1 of, dark greenish grey [5 GY 4/1, smooth fracture.
- b Elongated flakes, 3 of, dark greenish grey [5 GY 4/1] - with brown mottling, smooth fracture.
- c Chunks, 3 of, medium dark grey [N 4] with broad reddish bands [10 R 5/4]; rough fracture. One has the coarse angular sandstone base of an overlying greywacke bed.
- d Chunks, 3 of, brownish black [5 YR 2/1], rough fracture.
- e Medium Chunks and flakes, 47 of, medium dark grey to medium grey [N 4-5], rough fracture.
- f Chunks and flakes, 15 of, dark greenish grey [5 GY 4/1], smooth fracture.
- g Flakes, 18 of, brownish black [5 YR 2/1] with part dark greenish grey [5 GY 4/1], smooth fracture. [**'Red chert'**]
- h Small Flakes, 44 of, all of above types.

### 'Grey chert'

- j Flakes and chunks, 19 of, (2 large), light brownish grey, 1 has sharp contact with a grey bed; 3 have some brown mottling or band. Many show abundant radiolarians.

## Site 99/8/N4 (2011)

### Flint

Large chunk and 1flake, both with part cortex; light brownish grey [5 YR 6/1].

### Chert

- a Large Chunks, 7 of, and 3 elongated flakes, medium dark grey [N 4], rough fracture. Some with pale alteration showing radiolarians.
- b Chunks, 3 of, dark greenish grey [5 GY 4/1] - one with brown mottling, smooth fracture.
- c Chunks, 3 of, mainly light olive grey [5 Y 5/2] but part medium dark grey [N 4]. Faint lamination. One specimen has a band of pale reddish brown [10 R 5/4]; rough fracture. Abundant radiolarians.
- d Flake, 1 of, laminated pale red [101 R 6/2] and blackish red; rough fracture. Abundant radiolarians.
- e Medium Chunks and flakes, 53 of, medium dark grey to medium grey [N 4-5], rough fracture.
- f Chunks and flakes, 9 of, dark greenish grey [5 GY 4/1], smooth fracture.
- g Flakes, 6 of, brownish black [5 YR 2/1] with part dark greenish grey [5 GY 4/1], smooth fracture. [**'Red chert'**]
- h Small Flakes, 27 of, all of above types.

### 'Grey chert'

- j Flakes, 8 of, medium, light brownish grey, 1 with slight brown mottling.

## **Site \*99/8/N4 (2011)**

### **Quartz**

Very small crystal of (From charcoal spread).

### **Chert**

- a Medium Flakes, 4 of, medium dark grey [N 4], rough fracture.
- b Small Flakes, 16 of, all various types.

### **'Grey chert'**

- c Flakes, 3 of, medium, light brownish grey.

## **Site 99/8/N5 (2011)**

Flint

Microlith, pinkish grey [5 YR 8/1], and 1 flake with part cortex; light brownish grey [5 YR 6/1].

### **Chert**

- a Microliths, 2 of, up to 11mm long, medium grey [N5].
- b Large Chunk, 2 of, medium dark grey [N 4], rough fracture - pale alteration showing radiolarians.
- c Chunk, 1 of, brownish black [5 YR 2/1] - rough fracture.
- d Medium Chunks and flakes, 60 of, medium dark grey to medium grey [N 4-5], rough fracture.
- e Chunks and flakes, 12 of, dark greenish grey [5 GY 4/1], smooth fracture.
- f Chunks and flakes, 7 of, dark greenish grey [5 GY 4/1] with brown mottling, smooth fracture.
- g Small Flakes, 12 of, all of above types.

### **'Grey chert'**

- h Flakes, 1 large, 12 medium, light brownish grey, 1 with slight brown mottling.

### **'Red chert'**

- j Flakes, 1 large, 12 medium; moderate brown [5 YR 3/4] - greyish brown [5 YR 3/2], some with grey patches. Some have alteration to moderate yellowish brown [10 YR 5/4] in parts - with abundant radiolarians.

### **'Yellowish brown chert'**

- k Flakes, 1 large, 14 medium; pale yellowish brown [10 YR 6/2] - some with moderate brown [5 YR 4/4] patches. Some have alteration to moderate yellowish brown [10 YR 5/4] in parts. Some have abundant radiolarians.

### **'Banded chert'**

- l Flakes, 5 large, 4 medium, with laminae of various colours and composition - some in shades of grey, others with a band or bands of moderate yellowish brown [10 YR 5/4] or moderate brown [5 YR 4/4]. Most have abundant radiolarians.

## **Site 99/8/N6 (2011)**

### **Chert**

- a Microlith, 1 of, medium dark grey [N 4], 10mm long,.
- b Flake, possible piercer, dark greenish grey [5 GY 4/1], smooth fracture.
- c Large Flakes, 2 of, dark greenish grey [5 GY 4/1], smooth fracture.
- d Medium Flakes, 6 of, medium dark grey [N 4], rough fracture.
- e Flakes, 7 of, dark greenish grey [5 GY 4/1], smooth fracture.
- f Small Flakes, 14 of, various types.

### **'Grey chert'**

- g Chunks and flakes, 4 medium, light brownish grey, smooth and rough fracture.

### **'Red chert'**

- h Chunk, large dark reddish brown [10 R 3/4] with transition to pale brown [5 YR 5/2] - compare with 99/6/N4g
- j Chunks and flakes, 2 of, brownish black [5 YR 2/1], smooth fracture.

## **Site 99/9/S1**

### **Flint**

Flakes 5 of; pinkish grey [5 YR 8/1], 2 have been burnt and are off-white and have a crazed surface.

### **Chert**

- a Microliths, 4 of, in medium dark grey [N 4], up to 17mm long, 3 are dark grey [N 3], the other is light brownish grey [5 YR 6/1].
- b Large Chunks, 2 of, possible cores, dark greenish grey [5 GY 4/1], smooth fracture.
- c Chunks, 2 of, medium dark grey [N 4], rough fracture. Pale alteration showing radiolarians.
- d Medium Chunks and flakes, 29 of, medium dark grey to medium grey [N 4-5], rough fracture.
- e Chunks and flakes, 41 of, dark greenish grey [5 GY 4/1], smooth fracture.
- f Chunks and flakes, 20 of, brownish black [5 YR 2/1], smooth fracture. [**'Red chert'**]
- g Small Flakes, 59 of, all of above types.

### **'Grey chert'**

- h Medium Chunks and flakes, 6 of, light brownish grey.

## **Site 99/9/S2**

### **Flint**

Flakes 5 of; 2 pinkish grey [5 YR 8/1]; 1 light brownish grey [5 YR 6/1]; 2 medium dark grey [N 4].

### **Chert**

- a Large Flake 1 of, medium grey [N 5], rough fracture.
- b Medium Flakes, 21 of, medium dark grey to medium grey [N 4-5], rough fracture.
- c Chunks and flakes, 9 of, dark greenish grey [5 GY 4/1] and olive grey [5 Y 4/1], smooth fracture.
- d Small Flakes, 23 of, all of above types.

### **'Grey chert'**

- e Large chunk, with paler alteration, and 4 medium chunks and flakes, light brownish grey, with rough fracture.

## **Site 99/9/S3**

### **Flint**

Flakes 5 of; 4 pinkish grey [5 YR 8/1]; 1 light brownish grey [5 YR 6/1].

### **Chert**

- a Microlith, medium grey [N 5], 11mm.
- b Large Chunks, 2 of, 1 possibly a core, dark grey [N 3] and medium grey [N 5], rough fracture.
- c Chunk, 19 of, dark greenish grey [5 GY 4/1], smooth fracture.
- d Medium Flakes, 46 of, medium dark grey to medium grey [N 4-5], rough fracture.
- e Chunks and flakes, 3 of, dark greenish grey [5 GY 4/1], smooth fracture.
- f Small Flakes, 18 of, all of above types.

### **'Grey chert'**

- g Large chunk, and 2 medium flakes, light brownish grey, with rough fracture.

## **Site 99/9/N1**

### **Flint**

Flakes, 6 of; 5 pinkish grey [5 YR 8/1] and 1 light brownish grey [5 YR 6/1] - 2 with part cortex. Includes 1 core.

### **Chert**

- a Microliths, 2 of, 1 dark grey, 1 light grey.
- b Large Chunks, including possible cores, and flakes, 13 of, rough fracture medium dark grey [N 4]] and medium grey [N 5]. Pale alteration. radiolarians.
- c Chunks, including possible cores, 7 of, smooth fracture, dark greenish grey [5 G 4/1].
- d Chunk, 1 of, dark grey [N 3], smooth fracture. Pale alteration. radiolarians.
- e Chunk, 1 of, dark yellowish brown [10 YR 4/2], rough fracture. Pale alteration. Abundant radiolarians.

- f Medium Flakes and chunks, 55 of, medium dark grey to medium grey [N 4-5], rough fracture.
- g Chunks and flakes, 17 of, dark greenish grey [5 GY 4/1] and olive grey [5 Y 4/1], smooth fracture.
- h Flakes, 22 of, dark grey [N 3] and dark greenish grey [5 GY 4/1] with dark brown mottling, smooth fracture.
- j Small Flakes, 59 of, all of above types.

**‘Grey chert’**

- k Flakes, 4 of, light brownish grey, 1 with rough fracture, 3 with smooth.

**Site 99/9/N3 (2011)**

**Flint**

Flakes 5 of; 1 pale brown [5 YR 5/2] with cortex, 2 pinkish grey [5 YR 8/1]; 2 medium light grey [N 6].

**Chert**

- a Large Chunks and flakes, 6 of, dark grey [N 3] and medium grey [N 4], rough fracture - 3 with pale alteration.
- b Chunks, 3 of, grey black [N 2] - rough fracture - one has pale alteration with radiolarians.
- c Chunk - probable core, 2 flakes, dark greenish grey [5 GY 4/1], smooth fracture.
- d Medium Flakes, 39 of, medium dark grey to medium grey [N 4-5], rough fracture.
- e Chunks and flakes, 5 of, dark greenish grey [5 GY 4/1], smooth fracture.
- f Small Flakes, 21 of, all of above types.

**‘Grey chert’**

- g Flakes, 5 of, medium, light brownish grey, with rough fracture.

**‘Red chert’**

- h Flakes, 5 of, medium greyish brown [5 YR 3/2], 3 are part pale grey with radiolarians.

**Site 99/9/N4 (2011)**

**Flint**

Chunk, 1 of, pale brown [5 YR 5/2] with cortex, and 3 flakes - pinkish grey [5 YR 8/1].

**Chert**

- a Microlith, 13mm long, medium dark grey [N 4].
- b Large Chunks and flakes, 7 of, dark grey [N 3] and medium dark grey [N 4], rough fracture - some with pale alteration.
- c Chunks, 3 of, greyish black {N 2}, rough fracture - 2 with pale alteration with radiolarians.
- d Flake, 1 of, dark greenish grey [5 GY 4/1], smooth fracture.
- e Medium Flakes, 56 of, medium dark grey to medium grey [N 4-5], rough fracture.
- f Chunks and flakes, 8 of, dark greenish grey [5 GY 4/1], smooth fracture.
- g Small Flakes, 44 of, all of above types.

**'Grey chert'**

h Chunks, 5 of, 1 large, 4 medium, pale yellowish brown [10 YR 6/2], with rough fracture.

**'Yellow-brown chert'**

j Flakes, 6 of, 2 large, 4 medium - dark yellowish brown [10 YR 4/2] and moderate brown [5 YR 3/4], with rough fracture.

**'Banded chert'**

k Chunks, 3 large, alternating bands of grey and pale yellowish brown [10 YR 6/2], abundant radiolarians.

**Site 99/9/N5 (2011)**

**Flint**

Chunk, 1 of, pale brown [5 YR 5/2] with cortex, and 3 small flakes.

**Chert**

- a Microliths 3 of, up to 22mm long, medium dark grey [N 4].
- b Large Chunks, 3 of, medium dark grey [N 4], rough fracture - with pale alteration - one with radiolarians.
- c Flake, 1 of, dark greenish grey [5 GY 4/1], smooth fracture.
- d Medium Flakes, 37 of, medium dark grey to medium grey [N 4-5], rough fracture.
- e Chunks and flakes, 8 of, dark greenish grey [5 GY 4/1], smooth fracture.
- f Small Flakes, 22 of, all of above types.

**'Grey chert'**

g Flakes, 14 medium, pale yellowish brown [10 YR 6/2], with rough fracture.

**'Red chert'**

h Flakes, 10 of, 2 large, 8 medium - greyish brown [5 YR 3/2], some part dark greenish grey [5 GY 4/1], with rough fracture.

**'Banded chert'**

j Flakes, 4 large, alternating bands of dark and pale grey, abundant radiolarians.

**Site 99/10/S1**

**Flint**

Flakes, 6 of; brownish grey [5 YR 6/1] - including 1 microlith 19mm long.

**Chert.**

- a Large Chunks and flakes, 7 of, rough fracture, medium dark grey [N 4] and medium grey [N 5]. Pale alteration. radiolarians.
- b Chunks, including a possible core, 3 of, smooth fracture, dark greenish grey [5 G 4/1].
- c Chunks, 3 of, one is a probable core, smooth fracture, dark grey [N 3] with dark brown mottling. Pale alteration. radiolarians.
- d Medium Flakes and chunks, 39 of, medium dark grey to medium grey [N 4-5], rough fracture.
- e Flakes, 10 of, dark greenish grey [5 GY 4/1] and olive grey [5 Y 4/1], smooth fracture.



- f Flakes, 7 of, dark grey [N 3] and dark greenish grey [5 GY 4/1] with dark brown mottling, smooth fracture.
  - g Small Flakes, 16 of, all of above types.
- ‘Grey chert’**
- h Flakes, 2 of, light brownish grey, 1 with rough fracture, 1 with smooth.

## **Site 99/10/S2**

### **Flint**

Flakes, 1 of; brownish grey [5 YR 6/1]; 4 microliths up to 20mm long.

### **Chert**

- a Large Chunk, possible core, 1 of, and 1 flake, rough fracture, medium dark grey [N 4].
- b Medium Flakes and Medium Flakes and chunks, 19 of, medium dark grey to medium grey [N 4-5], rough fracture.
- c Flakes, 4 of, olive grey [5 Y 4/1], smooth fracture.
- d Flakes, 9 of, dark grey [N 3] and dark greenish grey [5 GY 4/1] with dark brown mottling, smooth fracture.
- e Small Flakes, 6 of, medium grey [N 5].

### **‘Grey chert’**

- f Chunks, medium, 3 of, light brownish grey, 2 with rough fracture, one with smooth fracture.

## **Site 99/10/S3 (2011)**

### **Flint**

Flake, 1 of; light brownish grey [5 YR 6/1].

### **Chert**

- a Large Chunk, 1 of, and 2 flakes, rough fracture, medium dark grey [N 4].
- b Medium Flakes and chunks, 24 of, medium dark grey to medium grey [N 4-5], rough fracture.
- c Flakes, 8 of, olive grey [5 Y 4/1], smooth fracture - 2 with brown mottling.
- d Small Flakes, 5 of, medium grey [N 5].

### **‘Grey chert’**

- e Chunks, 1 large, 4 medium, light brownish grey, rough fracture.

## **Site 99/10/N1**

### **Flint**

Scraper and 3 flakes, brownish grey [5 YR 6/1].

### **Chert**

- a Large Chunk, probable core, 1 of, and 1 flake, smooth fracture, olive grey with some brown mottling [5 Y 4/1]
- b Flakes and chunks, 9 of, medium dark grey to medium grey [N 4-5], rough fracture. Pale alteration. radiolarians.
- c Medium Flakes, 108 of, medium dark grey to medium grey [N 4-5], rough fracture.
- d Flakes, and chunks, 15 of, olive grey [5 Y 4/1], smooth fracture.
- e Flakes, 16 of, dark grey [N 3] and dark greenish grey [5 GY 4/1] with dark brown mottling, smooth fracture.
- f Small. Flakes, 45 of, all of above types.

### **'Grey chert'**

- g Chunks, medium and small, 13 of, light brownish grey, 5 with smooth fracture.

## **Site 99/10/N3**

### **Chert**

- a Medium Flakes, 4 of, medium dark grey to medium grey [N 4-5], rough fracture.

## **Site 99/10/N4 (2011)**

### **Flint**

Flakes, 2 of, brownish grey [5 YR 6/1].

### **Chert**

- a Large Chunk, possible core, 1 of, dark greenish grey [5 GY 4/1], smooth fracture.
- b Medium Flakes and chunks, 5 of, medium dark grey to medium grey [N 4-5], rough fracture. Some with pale alteration - radiolarians.
- c Chunk, 1 of, olive grey [5 Y 4/1], smooth fracture.
- d Small Flakes, 2 of, medium grey [N 5],.

## **Site 99/10/N5 (2011)**

### **Flint**

Flakes, 5 of, 1 brownish grey [5 YR 6/1], 4 pinkish grey [5 YR 8/1]

### **Chert**

- a Large Chunks, 5 of, 1 flake, medium dark grey to medium grey [N 4-5], rough fracture. Some with pale alteration - radiolarians.
- b Chunk, 1 of, dark greenish grey [5 GY 4/1], smooth fracture.
- c Medium Flakes and chunks, 24 of, medium dark grey to medium grey [N 4-5], rough fracture. Some with pale alteration.

- d Chunk, 1 of, 3 flakes, olive grey [5 Y 4/1], smooth fracture.
- e Flakes, 4 of, olive grey [5 Y 4/1] with moderate brown mottling, smooth fracture.
- f Small Flakes, 8 of, medium grey [N 5], various types,.

**'Grey chert'**

- g Chunks, 5 medium, light brownish grey, rough fracture.

**Site 99/11/S1**

**Chert**

- a Microliths, 9 of, up to 19 mm long, 2 brownish grey [5 YR 4/1], 1 dark grey [N 3], 4 olive grey [5 Y 4/1] and 1 'grey chert' [5 YR 6/1].
- b Large Chunks, some probably cores, 12 of; mostly medium dark grey [N 4]; 2 are dark grey [N 3] - rough fracture. Pale alteration. - showing radiolarians.
- c Flakes, elongated, 6 of, and 1 chunk, medium grey [N 5] and medium dark grey [N 4], smooth fracture. Some show signs of edge wear.
- d Medium Flakes, 48 of, medium dark grey to medium grey [N 4-5], rough fracture.
- e Flakes, 15 of, light olive grey [5 Y 6/1] and greenish grey [5 GY 6/1], smooth fracture.
- f Flakes, 22 of, dark grey [N 3] and medium dark grey [N 4], some with dark brown mottling, smooth fracture.
- g Small. Flakes, 20 of, all of above types.

**'Grey chert'**

- h Chunks, medium and small, 5 of, light brownish grey, 2 with smooth fracture.

**Site 99/11/S2 (2011)**

**Flint**

4 flakes, 3 large, brownish grey [5 YR 6/1] with pale mottling; 1 small, mainly off-white.

**Chert.**

- a Microliths, 3 of, up to 21 mm long, medium dark grey [N 4].
- b Blade-like, 4 of, possibly scrapers, dark greenish grey [5 GY 4/1] - one with brown mottling, smooth fracture.
- c Core, 1 of, partly dark greenish grey [5 GY 4/1], partly brownish black [5 YR 2/1], smooth fracture.
- d Large Chunks, 4 of, dark greenish grey [5 GY 4/1] - partly brownish black, [5 YR 2/1], smooth fracture. Pale alteration - radiolarians.
- e Chunks, 5 of, medium dark grey to medium grey [N 4-5], rough fracture. Pale alteration - radiolarians.
- f Medium Flakes, 29 of, medium dark grey to medium grey [N 4-5], rough fracture.
- g Flakes, 5 of, dark greenish grey [5 GY 4/1], smooth fracture.
- h Flakes, 4 of, dark greenish grey [5 GY 4/1], with dark brown mottling, smooth fracture.
- j Flake, brownish black, [5 YR 2/1], smooth fracture - pale alteration.

**'Red chert'**

k Small. Flakes, 9 of, all of above types.

**'Grey chert'**

l Flakes and chunks, medium, 5 of, light brownish grey, 4 with smooth fracture.

**Site 99/11/S3 (2011)****Flint**

Flake, 1 of, pinkish grey [5 YR 8/1].

**Chert**

- a Large Chunk, 1 of, medium dark grey, rough fracture, pale alteration, radiolarians.
- b Flakes, 3 of, 2 are elongated - bladelike; dark greenish grey [5 GY 4/1] - smooth fracture.
- c Flake, 1 of, dark greenish grey [5 GY 4/1] with darker mottling - smooth fracture.
- d Medium Flakes, and chunks, 10 of, medium dark grey to medium grey [N 4-5], rough fracture.
- e Small Flakes, 3 of, various types.

**Site 99/11/N1****Flint**

3 flakes, 1 brownish grey [5 YR 6/1], 2 pinkish grey [5 YR 8/1].

**Chert.**

- a Large Chunk, 2 of, possible cores, and flakes 2 of, dark greenish grey [5 GY 4/1] with darker mottling, smooth fracture.
- b Medium Flakes, and chunks, 45 of, medium dark grey to medium grey [N 4-5], rough fracture. Pale alteration. - some with radiolarians.
- c Flakes, and chunks, 11 of, olive grey [5 Y 4/1], smooth fracture. onewith dark brown mottling.
- d Small Flakes, 12 of, all of above types.

**'Grey chert'**

- e Chunks and flakes, medium, 7 of, light brownish grey, 2 with smooth fracture.

**Site 99/11/N3 (2011)<sup>1</sup>****Chert**

- a Large Flake, 1 of, possible scraper, medium dark grey, rough fracture, with dark mottling,.
- b Chunk, 1 of; pale alteration with radiolarians, flakes, 2 of; elongate; dark greenish grey [5 GY 4/1] - smooth fracture.
- c Medium Flakes, 3 of, dark greenish grey [5 GY 4/1] - smooth fracture.
- d Small Flakes, 4 of, various types.

<sup>1</sup>Note - old drain crosses this grid square

## **Site 99/11/N4 (2011)**

### **Flint**

Flake 1 of, brownish grey [5 YR 6/1].

### **Chert**

a Medium Flakes, 7 of, medium dark grey to medium grey [N 4-5] - rough fracture.

### **'Grey chert'**

b Flakes, 2 of, medium, light brownish grey, 1 with smooth fracture.

## **Site 99/12/S1**

### **Flint**

5 flakes, 3 brownish grey [5 YR 6/1], 2 pinkish grey [5 YR 8/1], 2 with cortex.

### **Chert**

a Probable core, medium dark grey [N 4], smooth fracture.

b Large Chunks, 2 of, medium dark grey [N 4], with darker mottling, rough fracture. Pale alteration. - with abundant radiolarians.

c Medium Flakes, and chunks, 30 of, medium dark grey to medium grey [N 4-5], rough fracture. Some with pale alteration. - with radiolarians.

d Flakes, and chunks, 20 of, dark greenish grey [5 G 4/1] and [5 GY 4/1], smooth fracture.

e Flakes, and chunks, 8 of, greyish black [N 2], smooth fracture.

f Small Flakes, 14 of, all of above types.

### **'Grey chert'**

g Chunks and flakes, medium, 7 of, light brownish grey.

### **'Grey mudstone'**

h Large Chunk, 34mm long, of possibly hornfelsed, silty mudstone, massive, pale yellowish brown [10 YR 6/2].

## **Site 99/12/S2 (2011)**

### **Flint**

1 flake, pinkish grey [5 YR 8/1].

### **Chert**

a Microliths, 2 of, 1 24mm long, dark grey [N 3].

b Large Chunks, 4 of, medium dark grey to medium grey [N 4-5], rough fracture. Pale alteration. - with abundant radiolarians.

c Chunk, 1 of; dark greenish grey [5 GY 4/1] - smooth fracture.

d Medium Flakes, and chunks, 28 of, medium dark grey to medium grey [N 4-5], rough fracture. Some with pale alteration. - with radiolarians.

e Flakes, 10 of; dark grey [N 5] with darker mottling - smooth fracture.

f Small Flakes, 12 of, various types.

### **'Grey chert'**

g Flakes, medium, 5 of, light brownish grey - 1 cut by quartz vein.

### **Site 99/12/S3 (2011)**

#### **Flint**

1 flake, brownish grey [5 YR 6/1], part cortex.

#### **Chert**

- a Microliths, 2 of, 1 24mm long, medium light grey {N 6}.
- b Large Chunks, 2 of, and 2 elongated flakes medium dark grey to medium grey [N 4-5], rough fracture. Pale alteration. - with radiolarians.
- c Medium Flakes, and chunks, 34 of, medium dark grey to medium grey [N 4-5], rough fracture. Some with pale alteration. - with radiolarians.
- d Flakes, and chunks, 4 of, dark greenish grey [5 GY 4/1], smooth fracture
- e Flakes, 3 of; greenish grey [5 GY 4/1] with brown mottling - smooth fracture.
- f Small Flakes, 13 of, mostly medium grey [N 5]

#### **'Grey chert'**

- g Flakes, medium, 8 of, light brownish grey.

### **Site 99/12/S4 (2011)**

#### **Flint**

3 flakes, 1 brownish grey [5 YR 6/1], 2 pinkish grey [5 YR 8/1].

#### **Chert**

- a Large Chunks, 6 of, medium dark grey to medium grey [N 4-5], rough fracture. Pale alteration. - with abundant radiolarians.
- b Medium Flakes, and chunks, 32 of, medium dark grey to medium grey [N 4-5], rough fracture. Some with pale alteration. - with radiolarians.
- c Small. Flakes, 28 of, of above types.

#### **'Grey chert'**

- d Flakes, medium, 22 of, light brownish grey.

### **Site 99/12/N1 (2011)**

#### **Chert**

- a Probable core, 1 of, medium dark grey [N 4], traces of banding, rough fracture.



## Site 99/12/N1

### Flint

5 flakes, pinkish grey [5 YR 8/1], 2 with cortex.

### Chert

- a Microliths, 5 of, up to 22 mm long, 4 brownish grey, [5 YR 4/1]; 1 light brownish [5 YR 6/1].
- b Blade, 48mm long, up to 8mm wide, dark greenish grey [5 GY 4/1] with brown mottling. Smooth fracture.
- c Scrapers, 2 of, dark greenish grey [5 GY 4/1] with brown mottling. Smooth fracture.
- d Large Flakes, 2 of, medium dark grey [N 4], smooth fracture.
- e Chunks, 5 of, medium dark grey [N 4], rough fracture. Two are narrow bladelike. Pale alteration on 3 of them- with radiolarians.
- f Medium Flakes, 158 of, medium dark grey to medium grey [N 4 -5], rough fracture. Some with pale alteration. - with radiolarians.
- g Flakes, and chunks, 31 of, dark greenish grey [5 GY 4/1], smooth fracture.
- h Flakes, 15 of, dark greenish grey [5 G 4/1] with brown mottling], smooth fracture.
- j Flakes, and chunks, 5 of, greyish black [N 2], smooth fracture.
- m Small Flakes, 409 of, all above types.

### 'Grey chert'

- n Chunks and flakes, medium, 18 of, light brownish grey, mostly smooth fracture - down to 1mm long

## Site 99/12/N2

### Flint

8 flakes, 5 pinkish grey [5 YR 8/1], 3 brownish grey [5 YR 6/1].

### Chert

- a Microliths, 8 of, up to 22 mm long, 3 brownish grey, [5 YR 4/1]; 3 light brownish [5 YR 6/1], 2 pinkish grey [5 YR 8/1] are perhaps flint.
- b Large Blade-like flakes, 5 of, possibly scrapers, up to 38mm long, and one piercer, dark grey to medium grey [N 3-4], 1 with smooth fracture.
- c Cores, 2 of, dark greenish grey [5 GY 4/1], one with brown mottling. Smooth fracture.
- d Flakes, 3 of, 2 medium dark grey [N 4], rough fracture.
- e Medium Chunks and flakes, 220 of, medium dark grey to medium grey [N 4-5], rough fracture. Some with pale alteration. - with Radiolaria.
- f Flakes, and chunks, 24 of, dark greenish grey [5 GY 4/1], smooth fracture.
- g Flakes, 25 of, dark olive black [5 Y 4/1], some with brown mottling, smooth fracture. ['Red chert']
- h Flakes, 7 of, greyish black [N 2], smooth fracture.
- j Small Flakes, 154 of, all of above types.

### 'Grey chert'

- k Possible core, 1 of; chunks and flakes, 1 large, medium, 34 of, light brownish grey, mostly smooth fracture

## **Site 99/12/N4**

### **Flint**

1 flake, pinkish grey [5 YR 8/1], with retouch

### **Chert**

a Flake, 1 of, dark greenish grey [5 GY 4/1], with brown mottling, smooth fracture.

## **Site 99/12/N5 (2011)**

### **Haematite**

Chunk, 1 of, no sign of faceting - modern

### **Chert**

a Large Chunks, 2 of, and 2 elongate flakes, medium dark grey to medium grey [N 4-5], rough fracture. Pale alteration. - with radiolarians.

b Chunks, 2 of, dark greenish grey [5 GY 4/1], one has brown mottling, smooth fracture. Pale alteration. - with radiolarians.

c Medium Flakes, and chunks, 5 of, medium dark grey to medium grey [N 4-5], rough fracture.

d Chunks, 2 of, dark greenish grey [5 GY 4/1], smooth fracture, one has brown mottling,

e Small Flakes, 8 of, of above types.

### **'Grey chert'**

f Flake, medium, 1 of, light brownish grey.

## **Site 99/13/S1 (2011)**

### **Flint**

Flakes and chunks, 5 of, 3 are brownish grey [5 YR 6/1] - one with cortex; one is light olive grey [5 Y 6/1] and one is pinkish grey [5 YR 8/1]. The last appears to have part cortex, blackened by burning.

### **Chert**

a Microlith, 1 of, broken, 12 mm long, medium grey, [N 5].

b Large Chunks and flakes, 12 of, medium dark grey to medium grey [N 4-5], rough fracture, pale alteration - radiolarians.

c Chunks, 3 of, dark greenish grey [5 GY 4/1] - one with brown mottling. Smooth fracture.

d Medium Chunks and flakes, 22 of, medium dark grey to medium grey [N 4-5], rough fracture.

e Flakes, 8 of, dark greenish grey [5 GY 4/1], 2 with dark brown mottling, smooth fracture.

f Small. Flakes, 10 of, all of above types.

### **'Grey chert'**

g Chunks and flakes, 10 of, 1 possibly a scraper, 2 large, 8 medium, light brownish grey, 5 with smooth fracture.

### **Site 99/13/S1\* (2011)<sup>2</sup>**

#### **Flint**

Flake, 1 of, brownish grey [5 YR 6/1].

#### **Chert**

- a Large Chunk, 1 of, rough fracture, pale alteration - radiolarians.
- b Medium Flake, 1 of, brownish grey [5 YR 4/1], rough fracture.

### **Site 99/13/S2 (2011)**

#### **Flint**

Flake, 1 of, brownish grey [5 YR 6/1].

#### **Chert**

- a Microlith, 1 of, broken, 11 mm long, medium grey, [N 5].
- b Large Chunks and flakes, 14 of, medium dark grey to medium grey [N 4-5], rough fracture, pale alteration - radiolarians. [Note - loose in bag]
- c Chunks, 2 of, and one elongate flake - possible scraper; dark greenish grey [5 GY 4/1] - one with brown mottling. Smooth fracture.
- d Medium Chunks and flakes, 31 of, medium dark grey to medium grey [N 4-5], rough fracture some with pale alteration - radiolarians.
- e Flakes and chunks including possible core, 6 of, dark greenish grey [5 GY 4/1], smooth fracture.
- f Flakes and chunks, 7 of, dark greenish grey [5 GY 4/1] with brown mottling, smooth fracture.
- g Small Flakes, 31 of, all of above types.

#### **'Grey chert'**

- h Chunks, 2 of, 1 large, 1 medium, light brownish grey.

### **Site 99/13/S3(2011)**

No finds.

<sup>2</sup>From charcoal patch

## Site 99/13/N1

### Flint

Microliths, 2 of, brownish grey [5 YR 6/1], 22 and 18mm long. Flakes, 7 of, 3 pinkish grey [5 YR 8/1], 3 brownish grey [5 YR 6/1] - one with cortex, 1 moderate reddish orange [10 R 6/6].

### Chert

- a Microliths, 3 of, up to 15 mm long, brownish grey, [5 YR 4/1].
- b Large Chunks, 4 of, one possibly a core, medium dark grey to medium grey [N 4-5], rough fracture, pale alteration - radiolarians.
- c Chunks, 2 of, one possibly a core, dark greenish grey [5 GY 4/1] with brown mottling. Smooth fracture.
- d Medium Chunks and flakes, 62 of, medium dark grey to medium grey [N 4-5], rough fracture. Some with pale alteration. - with radiolarians.
- e Flakes, 9 of, dark greenish grey [5 GY 4/1], smooth fracture.
- f Flakes and chunks, 19 of, dark greenish grey [5 GY 4/1], with brown mottling, smooth fracture.
- g Small Flakes, 41 of, all of above types.

### 'Grey chert'

- h Possible scraper, 1 of; chunks and flakes, 6 of, medium, light brownish grey, 3 with smooth fracture. One flake is partly gray.

## Site 99/13/N2 (2011)

### Flint

Flakes, 6 of, 4 pinkish grey [5 YR 8/1], 1 greyish pink [5 R 8/2], 1 greyish orange pink [5 YR 7/2].

### Chert

- a Microliths, 4 of, up to 15 mm long, dark greenish grey [5 GY 4/1] brown mottling. Smooth fracture.
- b Large Chunks, 4 of, 2 possibly cores, medium dark grey to medium grey [N 4-5], rough fracture, some with pale alteration.
- c Chunks, 2 of, dark greenish grey [5 GY 4/1]. Smooth fracture.
- d Large Chunks, 2 of, olive grey [5 Y 4/1], rough fracture, pale alteration.
- e Medium Chunks and flakes, 40 of, medium dark grey to medium grey [N 4-5], rough fracture. Some with pale alteration.
- f Flakes and chunks, 10 of, dark greenish grey [5 GY 4/1]. Smooth fracture.
- g Flakes, 11 of, dark greenish grey [5 GY 4/1], with brown mottling, smooth fracture.
- h Small Flakes, 58 of, all of above types.

### 'Grey chert'

- j Chunks and flakes, 15 of, 5 large, 10 medium, light brownish grey, rough and smooth fracture.

### 'Red chert'

- k Flakes, 4 of, 1 large, brown black [5 YR 2/1] - part dark greenish grey [5 GY 4/1], smooth fracture.

### **Site 99/13/N4 (2011)**

#### **Chert**

- a Large Chunk, 1 of, medium [N 5], rough fracture, pale alteration - abundant radiolarians.
- b Flakes, 2 of, one a possible scraper, olive grey [5 Y 4/1]. Smooth fracture.
- c Medium Flakes, 11 of, medium dark grey to medium grey [N 4-5], rough fracture. Some with pale alteration.
- d Flake, 1 of, dark greenish grey [5 GY 4/1]- olive grey [5 Y 4/1].

#### **'Red chert'**

- e Chunk, large, blackish red [5 R 2/2], laminated, with dark greenish grey [5 GY 4/1] band; 2 medium with dark greenish grey mottling; all with smooth fracture.

### **Site 99/13/N5 (2011)**

#### **Chert**

- a Medium Flakes, 7 of, medium dark grey to medium grey [N 4-5], rough fracture.
- b Flakes, 3 of, of above types.

#### **'Grey chert'**

- c Flake, 1 medium, light brownish grey, smooth fracture.

#### **'Red chert'**

- d Chunk, large, blackish red [5 R 2/2], with dark greenish grey [5 GY 4/1] mottling; 1 medium, blackish red [10 R 2/2] with pale alteration; both with smooth fracture.

### **Site 99/13/N6 (2011)**

#### **Chert**

- a Large Chunk, 1 of, medium grey [N 5], rough fracture, pale alteration.
- b Medium Flakes, 4 of, medium dark grey to medium grey [N 4-5], rough fracture.

### **Site 99/14/S1 (2011)**

#### **Flint**

Flake, possible scraper, pale reddish brown [10 R 5/4].

#### **Chert**

- a Medium Flakes, 2 of, medium dark grey and medium grey [N 4-5], rough fracture.
- b Flake, 1 of, dark greenish grey [5 GY 4/1], smooth fracture.

### **Site 99/14/S2 (2011)**

#### **Chert**

- a Medium Flakes, 4 of, medium dark grey and medium grey [N 4-5], rough fracture.

#### **'Red chert'**

- b Large Chunk, large, blackish red [5 R 2/2], banded with dark greenish grey [5 GY 4/1].
- c Medium Flakes, 2 of, blackish red [5 R 2/2], with dark greenish grey mottling; smooth fracture.

### **Site 99/14/S3 (2011)**

No finds

### **Site 99/14/N1 (2011)**

#### **Chert**

- a Large Chunk, 1 of, medium grey [N 5], rough fracture, pale alteration.
- b Medium Flake, 1 of, dark greenish grey [5 GY 4/1], smooth fracture.

### **Site 99**

#### **Chert, Random finds**

- a Large Flakes, 2 of, medium dark grey and medium grey [N 4-5], rough fracture.
- b Medium Flakes, 2 of, medium dark grey and medium grey [N 4-5], rough fracture.

### **Site 99/8-10/N2**

#### **Flint**

Flakes, 9 of, 7 pinkish grey [5 YR 8/1], 3 brownish grey [5 YR 6/1]

#### **Chert**

- a Microliths, 4 of, up to 21 mm long, grey and brownish grey [5 YR 4/1].
- b Large Chunks, 8 of, 2 conjoining, rough fracture, pale alteration - radiolarians.
- c Chunks, 4 of, one possibly a core, another a scraper, dark greenish grey [5 GY 4/1] with brown mottling. Smooth fracture.
- d Medium Chunks and flakes, 88 of, medium dark grey to medium grey [N 4-5], rough fracture. Some with pale alteration. - with radiolarians.
- e Flakes and chunks, 21 of, dark greenish grey [5 GY 4/1], smooth fracture.
- f Flakes and chunks, 26 of, dark greenish grey [5 GY 4/1], with brown mottling, smooth fracture
- g Small Flakes, 20 of, all of above types.

#### **'Grey chert'**

- h Chunks and flakes, 8 of, medium, light brownish grey, 5 with smooth fracture.

#### **'Red chert'**

- j Chunk, 1 of, medium, greyish red [5 R 4/2], rough fracture.

## **Site 99 (2011)    Spoil**

### **Flint**

Flakes, 2 of, brownish grey [5 YR 6/1]

### **Chert**

- a        Large Chunks, 1 of, greyish black [N 2], rough fracture.
- b        Medium Chunks and flakes, 10 of, medium dark grey to medium grey [N 4-5], rough fracture.
- c        Flakes and chunks, 4 of, dark greenish grey [5 GY 4/1], smooth fracture

### **'Grey chert'**

- d        Chunks and flakes, 3 of, medium, light brownish grey.

## **Site 99 (2012)    Spoil**

### **Flint**

- a        Flakes, 1 of, medium, 2 small, brownish grey [5 YR 4/1]
- b        Flakes, 1 of, medium - burnt, 2 small, light brownish grey [5 YR 6/1].

### **Chert**

- a        Microliths, 2 of, 11mm x 5mm; 10mm x 4.5mm – olive grey [5 Y 4/1].
- b        Medium Chunk, 1 of, and 1 flake, medium dark grey to medium grey [N 4-5], rough fracture.
- c        Flakes and chunks, 5 of, dark greenish grey [5 GY 4/1], smooth fracture



**DAER 2010**  
**Site No 99**  
**FLINT**

**Old hill  
drain**

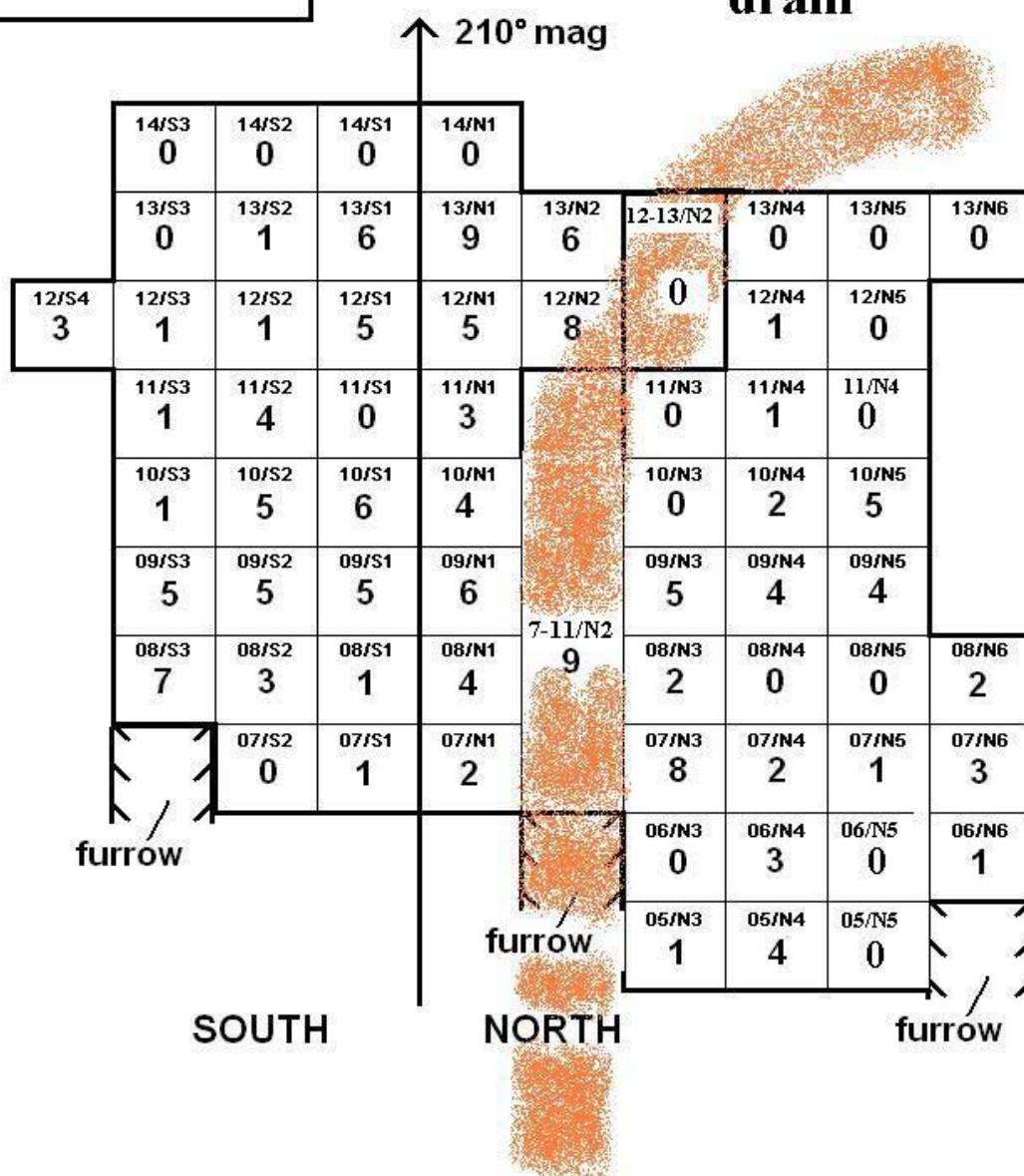


Fig 1

**DAER 2010**  
**Site No 99**  
**CHERT**

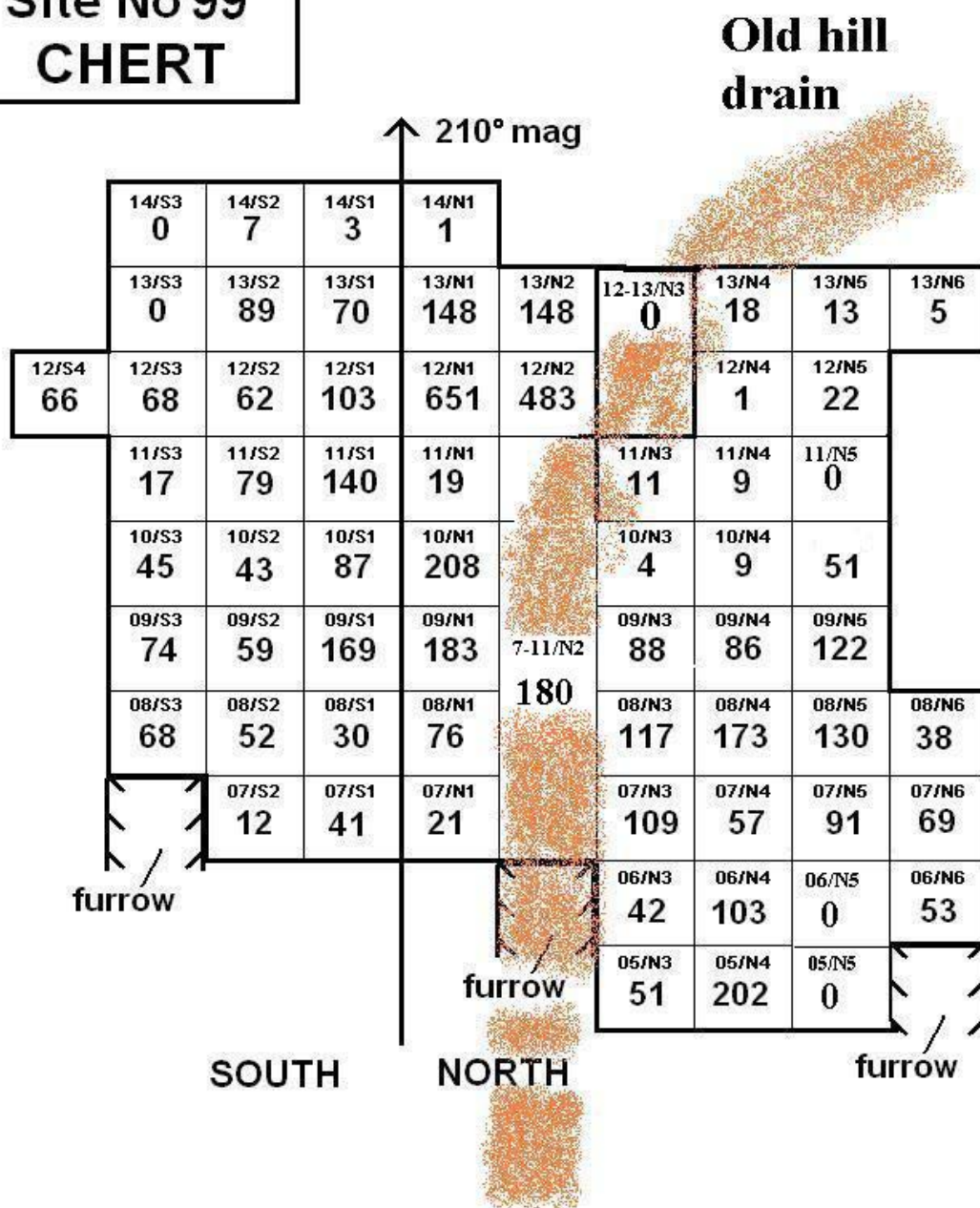


Fig 2

**DAER 2010**  
**Site No 99**  
**FLINT**

**Old hill  
drain**

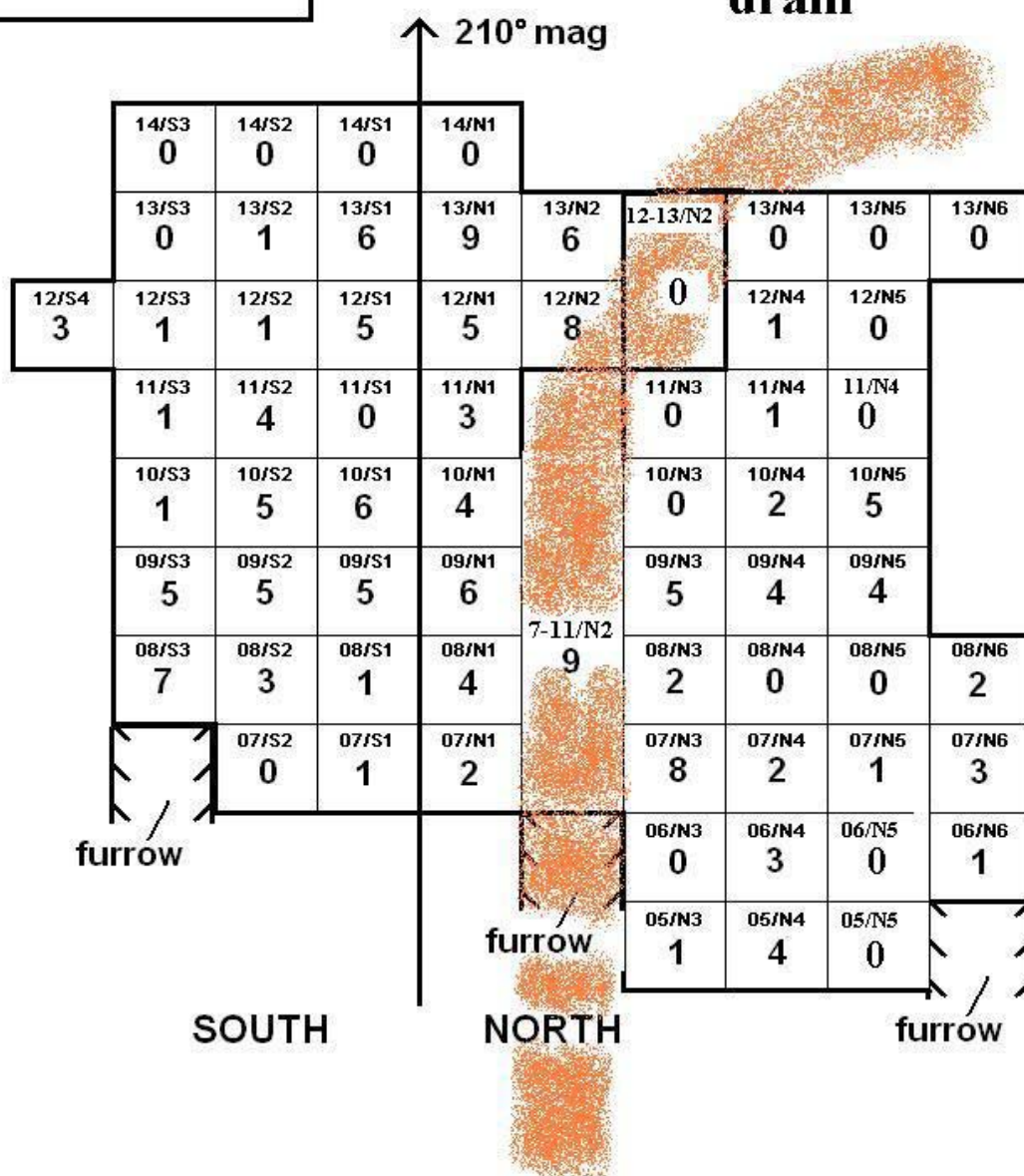


Fig 2





Plate 1



Plate 2



Plate 3



Plate 4



Plate 5



Plate 6





Plate 7



Plate 8



Plate 9

DAER 2010 - 2011 SITE 99 [NS 955778 10535]

GridNo	Date	Flint	P'stone	Ceram	Chert - rough			Chert - smooth			Chert - 'grey'			Various	Total	Small	Total	Chert	Mic	Tools*				Ch.FI	R/C	(R-Q)/C	H/K	PERCENT H	Comment
					Large	Med	Total	Large	Med	Total	Large	Med-S	Total							Co	BI	Pts	Scr						
99/5/N3	2011	1			2	16	18	2	14	16	4	4	47		10	51		51	9			2		51	41.0	1.1	52.9		
99/5/N4	2011	4			6	50	56	4	22	26	1	46	2		64	202		202	1					50.5	34.5	2.2	68.3		
99/6/N3	2011	0			2	11	13	2	10	12	2	2	2	13	14	42		42	3					34.3333	25.0	2.5	71.2	P has 8 'Red ch' and 5 red-mottled	
99/6/N4	2011	1			3	8	29	37	2	15	15	9	5		28	103		103	3					53	40.0	3.3	76.5		
99/6/N6	2011	1			2	17	19	2	6	8	1	1	2		10	41		41	2					41	31.0	2.4	70.4		
99/7/S1	2011	0			1	3	4		4	4	2	2	2		2	12		12						10.5	7.5	1.6	61.5	S 3 a re flint	
99/7/N1	2011	2			8	31	38	4	5	5	3	5	1		6	21		21	1					10.5	10.9	0.7	42.5		
99/7/N3	2011	8			4	27	31	4	38	42	3	5	8		22	109		109	3	3				13.625	7.9	1.6	61.5		
99/7/N4	2011	2			1	23	24	1	10	11	1	5	6		16	57		57						28.5	20.5	2.2	68.6	S 1 is flint	
99/7/N5	2011	1			12	30	42	1	13	14	1	11	12		23	91		91	1,1F					91	68.0	3.0	75.0	P has 3 'Red ch' and 2 banded chert	
99/7/N6	2011	3			4	14	18	1	7	8	2	4	6	5	30	69		69	1			1		23	13.0	2.3	69.2	P = 'Red chert'	
99/8/S1	2011	1			1	4	5		9	13	3	3	3	2	7	30		30	2,1F	72				17.3333	12.3	7.4	1.0	50.0	S 1 is flint
99/8/S2	2011	3			2	23	25	1	24	25	2	2	2		15	52		52						17.3333	7.4	1.0	50.0		
99/8/S3	2011	7			6	21	27	2	22	24	3	3	3		16	68		68	1					19	13.8	1.1	52.9		
99/8/N1	2011	4			11	53	64	3	15	18	8	8	8		27	117		117	4					58.5	45.0	3.6	78.0	S 2 are flint	
99/8/N4	2011	0			6	47	53	4	33	37	2	17	19		44	152		152											*From charcoal spread
*99/8/N4	2011	0			4	4	4		4	4		3	3		16	23		23	2,1F					65	59.0	3.3	76.5	NB. P Includes red and yellow bro variants	
99/8/N5	2011	2			2	60	62		19	19	7	30	37		12	130		130				1							* Includes 'black chert', 20 of
99/8/N6	2011	0			6	6	6	2	7	9	4	4	4	3	14	36		36	1										
99/9/S1	2010	5			2	29	31	2	61*	63	6	6	6		59	169		169	4										
99/9/S2	2010	5			1	21	22		9	9	1	4	5		23	59		59											
99/9/S3	2011	5			2	46	48	1	3	4	1	2	3		18	74		74	1										
99/9/N1	2010	6			14	55	69	8	39	47	4	4	4	5	59	183		183	2			1F							
99/9/N3	2011	5			9	39	48	3	5	8	5	5	5		21	88		88	1										
99/9/N4	2011	4			10	56	66	1	8	9	1	4	5	9	44	86		86	1										
99/9/N5	2011	4			3	37	40	1	8	9		14	14	37	22	122		122	3										Yellow-brown' and 'banded' chert
99/10/S1	2010	6			7	39	46	6	17	23	2	2	2		16	87		87	1F										Red' and 'banded' chert
99/10/S2	2010	5			2	19	21		13	13	3	3	3		6	43		43	4F										S = Flint
99/10/S3	2011	1			3	24	27		8	8	1	4	5		5	45		45											S = Flint
99/10/N1	2010	4			9	108	117	2	31	33	13	13	13		45	208		208				1F		52	40.8	3.5	78.0		
99/10/N2	2010		No finds																										
99/10/N3	2011	0			4	4	4		1	1	2				2	9		9											
99/10/N4	2011	2			5	5	5	1	8	9		5	5		8	51		51											
99/10/N5	2011	5			5	24	29	1	8	9		5	5		20	140		140	9										
99/11/S1	2010	0			12	48	60	7	37	44		5	5	9	9	79		79	3	71									1 micro is 'grey' chert
99/11/S2	2010	4			5	29	34	4	10	14	5	5	5		12	89		89											9 'Red chert'
99/11/S3	2011	1			1	10	11	3	3	3					3	17		17											
99/11/N1	2010	3			4	45	49	3	11	11	7	7	7		12	79		79											
99/11/N3	2011	0			1	1	1	3	3	6		2	2		4	11		11											
99/11/N4	2011	1			7	7	7								9			9											
99/12/S1	2010	5			2	30	32	1	58	59	7	7	7		14	103		103											Also 1 piece grey mudstone
99/12/S2	2011	1			4	28	32	1	10	11	5	5	5		12	89		89	2										
99/12/S3	2011	1			4	34	38		7	7		8	8		13	68		68	2										
99/12/S4	2011	3			6	32	38								28	66		66											
99/12/N1	2010	5			5	158	163	2	51	53	18	18	18		409	651		651	5										
99/12/N2	2010	8			220	220	220	10	56	66	1	34	35		154	483		483	8	73									
99/12/N4	2011	1						1	1	1					1			1											
99/12/N5	2011	0			4	5	9	2	2	4	1	1	1		8	22		22											haematite, 1 of
99/13/S1	2011	5			12	22	34	3	8	11	2	8	10		10	68		68	1										
99/13/S1*	2011	1						1	1	2					2			2											From charcoal patch
99/13/S2	2011	1			14	31	45	3	7	10	1	1	2		31			89	1										No finds
99/13/S3	2011	0													0			0											2 are flint
99/13/N1	2010	9			4	62	66	2	28	30	1	6	7	4	41	147		147	3,2F										
99/13/N1	2011	0			1	1	1								1			1											
99/13/N2	2011	6			6	40	46		21	21	5	10	15	4	58	148		148	4										P = 'Red chert'
99/13/N4	2011	0			1	11	12	2	1	3					3	18		18											P = 'Red chert'
99/13/N5	2011	0			1	7	7				1	1	1	2				5											

## Site No 100

Tam Ward & Ian Paterson

### Introduction

The site was originally recorded as:

138 97 **Site No 100** Chert 15 of Flint 5 of NS 95535 10527 Pitchstone grey 1 of.

The site lies on the present southern scarp of the Smithwood Burn and on the lower east flank of Coom Rig and at 310m OD. The magnetic bearing on the small trench baseline was 188°.

This location surprisingly produced relatively little given the concentration of items which were made at the original find spot, in the furrow. There was only turf and soil at this location being a well drained spot adjacent the burn edge, although a depth of peat of 0.5m lay only a few metres away.

The assemblage appears to represent a small scale Mesolithic activity although pitchstone flakes were also found, and these, taken along with a few Early Neolithic sherds found nearby certainly indicate that both periods are represented in the immediate area if not actually on this site.

### Comment

The excavation covered 8 square metres. Some 220 lithic fragments were recovered. Of these, 40 were small – that is, less than 10mm in length - and, as their identification was in many cases uncertain, they have not been included in the calculations that follow.

The assemblage from the site is composed predominantly of chert. Of the 162 identifiable chert fragments, 80% consisted of the rough-fracturing dark grey type; with about 12 of the total being the smooth-fracturing greenish-grey variant. About 5% of the total was 'grey' chert and there was a handful of 'red' chert fragments.

A total of 16 flint fragments were recovered from all but 2 of the grids excavated and comprise some 8% of the total lithic assemblage. Overall, the ratio of chert to flint was about 10 to 1.

Only 4 microliths were retrieved – all of chert.

Two sherds of pottery were found near the excavation.

### **Grid 100/3/N1 (2011)**

#### **Flint**

Core, pale yellowish brown [10 YR 6/2] and greyish orange pink [5 YR 7/2] - part of a water-rounded pebble.

#### **'Red chert'**

Flake, 1 medium, dusky brown [5 YR 2/2] with traces of dark greenish grey [5 GY 4/1], smooth fracture. Pale alteration showing radiolarians.

### **Grid 100/4/N1 (2011)**

#### **Flint**

Flakes, medium, 2 of, light brownish grey [5 YR 6/1] - one is part of a water-rounded pebble.

#### **Chert**

- a Large Chunks, 3 of, medium dark grey [N 4], rough fracture.
- b Chunk, 1 of, possible core, dark greenish grey [5 GY 4/1], smooth fracture.
- c Medium Chunks and flakes, 8 of, dark grey [N 3] to medium grey [N 5], rough fracture.
- d Small Flakes, 11 of, various types.

### **Grid 100/4/S2 (2011)**

#### **Flint**

Flake, very small, 1 of - light brownish grey [5 YR 6/1].

#### **Chert**

- a Microliths, 4 of, up to 22mm long, medium grey [N 5].
- b Large Chunks and flakes, 6 of, dark grey [N 3] to medium grey [N 5], rough fracture. One probably a core; another is part of a water-worn pebble.
- c Medium Chunks and flakes, 52 of, dark grey [N 3] to medium grey [N 5], rough fracture.
- d Small Flakes, 11 of, various types.

#### **'Grey chert'**

- e Chunks, 3 large and 1 medium, light brownish grey [5 YR 6/1].

### **Grid 100/4/S3 (2011)**

#### **Chert**

- a Large Chunk, 1 of, probable core, dark greenish grey [5 GY 4/1], smooth fracture.
- b Medium Chunks and flakes, 11 of, dark grey [N 3] to medium grey [N 5], rough fracture.

#### **'Grey chert'**

- c Chunk, large and 1 medium flake, light brownish grey [5 YR 6/1].



### **Grid 100/5/N1 (2011)**

#### **Flint**

Chunk, pale yellowish brown [10 YR 6/2] - part cortex.

#### **Chert**

- a Large Chunks, 2 of, medium grey [N 5], rough fracture.
- b Medium Chunks and flakes, 7 of, dark grey [N 3] and medium grey [N 5], rough fracture.
- c Small Flakes, 4 of, various types.

### **Grid 100/5/S2 (2011)**

#### **Chert**

- a Large Chunk, 1 of, dark grey [N 3], rough fracture.- deep zone of pale alteration
- b Medium Chunks and flakes, 2 of, dark grey [N 3] and medium grey [N 5], rough fracture.

#### **'Grey chert'**

- c Flakes, 2 medium, light brownish grey [5 YR 6/1].

### **4/S/1, 5/S/1 (2010) - Furrow - 2 m [NS 95534 10526].**

#### **Flint**

Flakes, medium, 11 of, 4 are light brownish grey [5 YR 6/1] - 6 are very light grey [N 8].

#### **Pitchstone**

Flakes, 3 of, medium dark grey [N 4].

#### **Chert**

- a Large Chunks and flakes, 5 of, medium dark grey [N 4], some with thick pale altered zones - radiolarians, rough fracture.
- b Chunks, 5 of, medium dark grey [N 4] and dark grey, some with thick pale altered zones - radiolarians, smooth fracture.
- c Medium Chunks and flakes, 36 of, dark grey [N 3] to medium grey [N 5], rough fracture.
- d Flakes, 9 of, olive grey [5 Y 4/1], smooth fracture.
- e Small Flakes, 14 of, various types.

#### **'Grey chert'**

- f Flake, 1 large, light brownish grey [5 YR 6/1].

#### **'Red chert'**

- g Chunks, 3 of, dusky brown [5 YR 2/2] with part dark greenish grey [5 GY 4/1], smooth fracture.

## **Grid 100/4/N1, 4/S1, 5/S1 (2011)**

### **Flint**

Flake, medium, 1 of, very light grey [N 8].

### **Chert**

- a Large Chunks, 5 of, medium grey [N 5] and medium dark grey [N 4], rough fracture.
- b Medium Chunks and flakes, 12 of, medium grey [N 5] and medium dark grey [N 4], rough fracture.

Note: These finds are not included in the site plot.

**Sites near Site 100 - distinguished by their NGR's. For convenience, they are here renamed as 100/NGR/A, 100/NGR/B etc.**

## **100/NGR/A [NS 95528 10528]**

### **Flint**

Scraper, round, c.20mm in diameter, and possible piercer Both are on very light grey [N 8].

### **Chert**

- a Medium Chunk, 1 of, olive grey [5 Y 4/1], smooth fracture.

## **100/NGR/B [NS 95528 10530]**

### **Pitchstone**

Flake, 1 of, medium grey [N 5] - with small flow-aligned dark mineral grains.

## **100/NGR/C [NS 95520 10522]**

### **Flint**

Flakes, 4 of, small, light grey [N 7].

### **Chert**

- a Large Flakes, elongated, 4 of, medium grey [N 5] and medium dark grey [N 4], rough fracture.
- b Medium Chunks and flakes, 17 of, medium grey [N 5] and medium dark grey [N 4], rough fracture.
- c Flakes, 3 of, olive grey [5 Y 4/1], smooth fracture.

### **'Grey chert'**

- d Flakes, 3 medium, light brownish grey [5 YR 6/1].

### **'Red chert'**

- e Chunk, possible core, dusky brown [5 YR 2/2] with traces of dark greenish grey [5 GY 4/1], smooth fracture.

## **100/NGR/D [NS 95530 10523]**

### **Ceramics**

Numerous very small sherds. Fabric fine-grained, dark grey with red-brown on? exterior.

### **Chert**

- a Medium Chunks and flakes, 4 of, medium dark grey [N 4}, rough fracture.
- b Flakes, 2 of, dark greenish grey [5 GY 4/1], smooth fracture.

### **'Grey chert'**

- c Flake, 1 medium, light brownish grey [5 YR 6/1] - smooth fracture.

## **100/NGR/E [NS 95514 10528]**

### **Chert**

- a Large Flake, elongated, 1 of, medium grey [N 5], pale alteration, rough fracture.
- b Chunk, 1 of, greyish black [N 2] passing into olive grey [5 Y 4/1] below pale alteration, smooth fracture.
- c Medium Chunks and flakes, 11 of, medium dark grey [N 4}, rough fracture.

### **'Red chert'**

- d Chunks - large, 5 of, and 5 medium flakes. This group of fragments appear to have come from a single large block of smooth-fracturing dark greenish grey [5 GY 4/1] chert with large scale mottling in blackish red [5 R 2/2].

## **100/Spoil**

### **Flint**

- a Possible scraper, pale yellowish brown [10 YR 4/2] - burnt cortex.

### **Chert**

- a Microlith, 1 of, 19mm long, medium grey [N 5].
- b Large Chunk, possible core, banded medium dark grey [N 4] and moderate brown [5 YR 4/4] - pale alteration, rough fracture.
- c Flake, 1 of, medium grey [N 5], pale alteration, rough fracture.
- d Medium Flakes, 4 of, medium dark grey [N 4}, pale alteration, rough fracture.
- e Flakes, 4 of, olive grey [5 Y 4/1], smooth fracture.

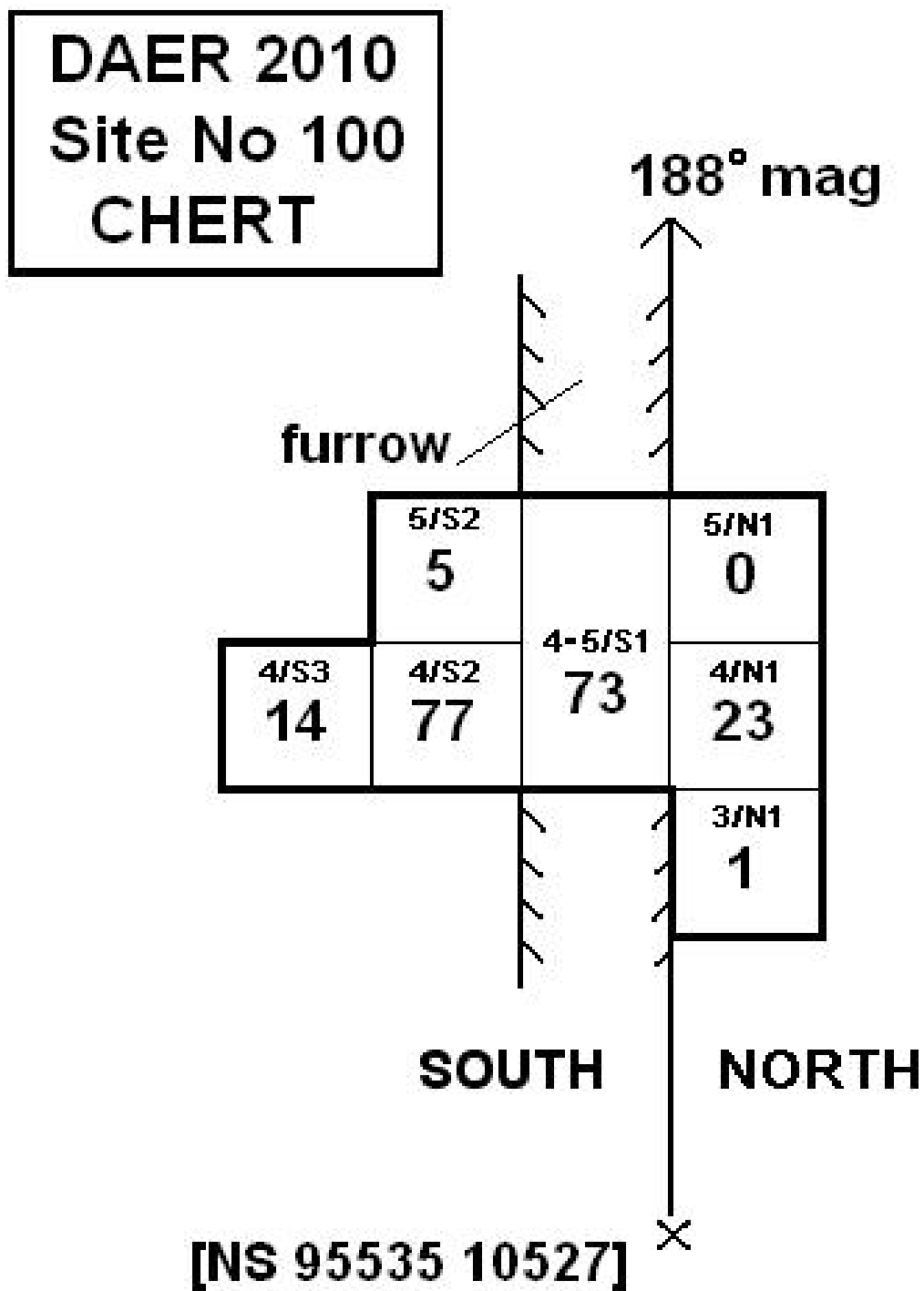


Fig 1

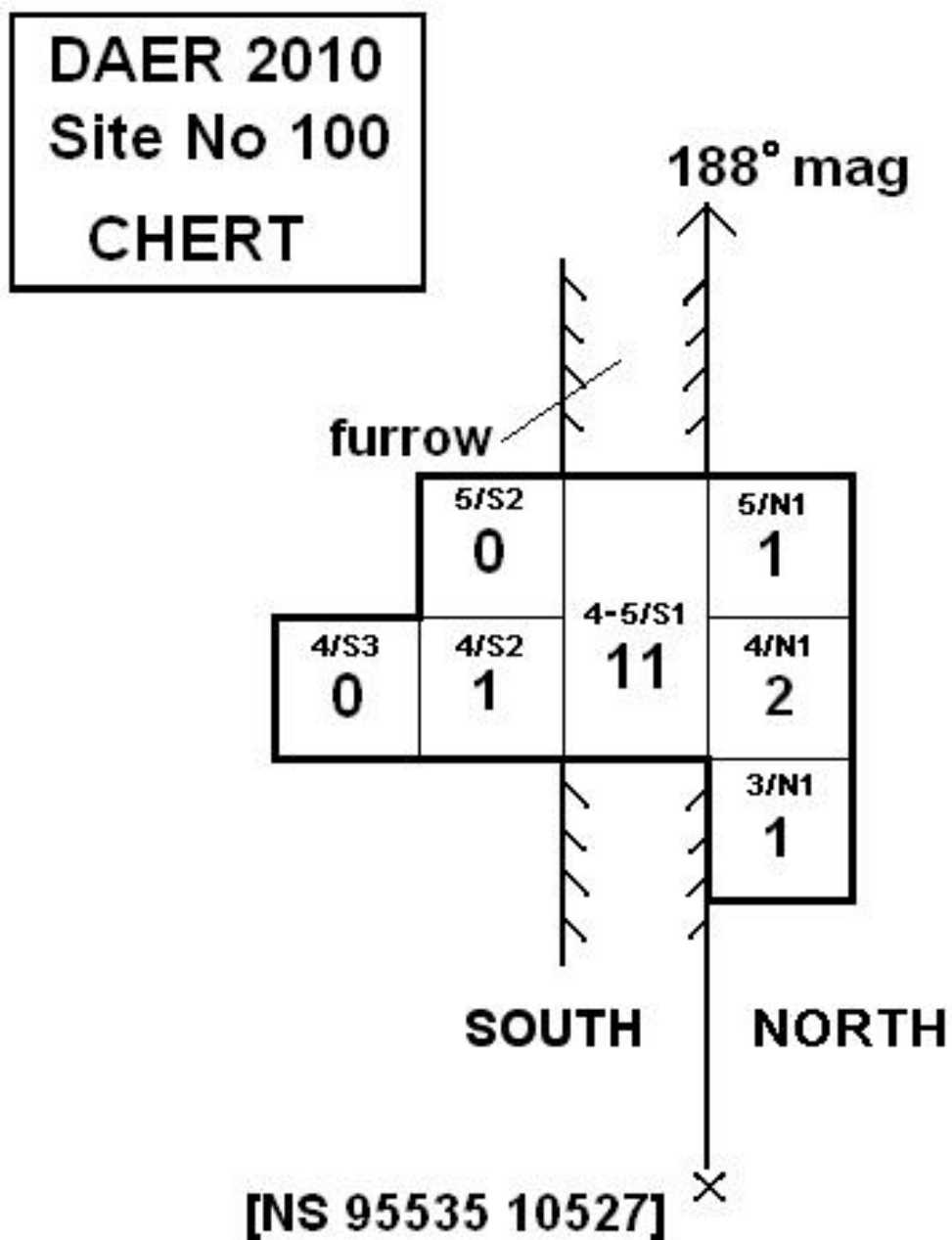


Fig 2



Plate 1



Plate 2



Plate 3

**Excavation finds list**  
**by**  
**Ian Paterson**

**Comment**

The excavation covered 8 square metres. Some 220 lithic fragments were recovered. Of these, 40 were small – that is, less than 10mm in length - and, as their identification was in many cases uncertain, they have not been included in the calculations that follow.

The assemblage from the site is composed predominantly of chert. Of the 162 identifiable chert fragments, 80% consisted of the rough-fracturing dark grey type; with about 12 of the total being the smooth-fracturing greenish-grey variant. About 5% of the total was 'grey' chert and there was a handful of 'red' chert fragments.

A total of 16 flint fragments were recovered from all but 2 of the grids excavated and comprise some 8% of the total lithic assemblage. Overall, the ratio of chert to flint was about 10 to 1.

Only 4 microliths were retrieved – all of chert.

Two sherds of pottery were found near the excavation.

**Grid 100/3/N1 (2011)**

**Flint**

Core, pale yellowish brown [10 YR 6/2] and greyish orange pink [5 YR 7/2] - part of a water-rounded pebble.

**'Red chert'**

Flake, 1 medium, dusky brown [5 YR 2/2] with traces of dark greenish grey [5 GY 4/1], smooth fracture. Pale alteration showing radiolarians.

**Grid 100/4/N1 (2011)**

**Flint**

Flakes, medium, 2 of, light brownish grey [5 YR 6/1] - one is part of a water-rounded pebble.

**Chert**

- |   |        |  |
|---|--------|--|
| a | Large  | Chunks, 3 of, medium dark grey [N 4], rough fracture.                          |
| b |        | Chunk, 1 of, possible core, dark greenish grey [5 GY 4/1], smooth fracture.    |
| c | Medium | Chunks and flakes, 8 of, dark grey [N 3] to medium grey [N 5], rough fracture. |
| d | Small  | Flakes, 11 of, various types.  |

**Grid 100/4/S2 (2011)**

**Flint**

Flake, very small, 1 of - light brownish grey [5 YR 6/1].

**Chert**

- |   |        |   |
|---|--------|---|
| a |        | Microliths, 4 of, up to 22mm long, medium grey [N 5].   |
| b | Large  | Chunks and flakes, 6 of, dark grey [N 3] to medium grey [N 5], rough fracture. One probably a core; another is part of a water-worn pebble. |
| c | Medium | Chunks and flakes, 52 of, dark grey [N 3] to medium grey [N 5], rough fracture.   |
| d | Small  | Flakes, 11 of, various types.   |

**‘Grey chert’**

e Chunks, 3 large and 1 medium, light brownish grey [5 YR 6/1].

**Grid 100/4/S3 (2011)****Chert**

- a Large Chunk, 1 of, probable core, dark greenish grey [5 GY 4/1], smooth fracture.
- b Medium Chunks and flakes, 11 of, dark grey [N 3] to medium grey [N 5], rough fracture.

**‘Grey chert’**

c Chunk, large and 1 medium flake, light brownish grey [5 YR 6/1].

**Grid 100/5/N1 (2011)****Flint**

Chunk, pale yellowish brown [10 YR 6/2] - part cortex.

**Chert**

- a Large Chunks, 2 of, medium grey [N 5], rough fracture.
- b Medium Chunks and flakes, 7 of, dark grey [N 3] and medium grey [N 5], rough fracture.
- c Small Flakes, 4 of, various types.

**Grid 100/5/S2 (2011)****Chert**

- a Large Chunk, 1 of, dark grey [N 3], rough fracture.- deep zone of pale alteration
- b Medium Chunks and flakes, 2 of, dark grey [N 3] and medium grey [N 5], rough fracture.

**‘Grey chert’**

c Flakes, 2 medium, light brownish grey [5 YR 6/1].

**4/S/1, 5/S/1 (2010) - Furrow - 2 m [NS 95534 10526].****Flint**

Flakes, medium, 11 of, 4 are light brownish grey [5 YR 6/1] - 6 are very light grey [N 8].

**Pitchstone**

Flakes, 3 of, medium dark grey [N 4].

**Chert**

- a Large Chunks and flakes, 5 of, medium dark grey [N 4], some with thick pale altered zones - radiolarians, rough fracture.
- b Chunks, 5 of, medium dark grey [N 4] and dark grey, some with thick pale altered zones - radiolarians, smooth fracture.
- c Medium Chunks and flakes, 36 of, dark grey [N 3] to medium grey [N 5], rough fracture.
- d Flakes, 9 of, olive grey [5 Y 4/1], smooth fracture.
- e Small Flakes, 14 of, various types.

**‘Grey chert’**

f Flake, 1 large, light brownish grey [5 YR 6/1].

**‘Red chert’**

g Chunks, 3 of, dusky brown [5 YR 2/2] with part dark greenish grey [5 GY 4/1], smooth fracture.

**Grid 100/4/N1, 4/S/1, 5/S1 (2011)****Flint**

Flake, medium, 1 of, very light grey [N 8].

**Chert**



- |   |        |   |
|---|--------|---|
| a | Large  | Chunks, 5 of, medium grey [N 5] and medium dark grey [N 4}, rough fracture.             |
| b | Medium | Chunks and flakes, 12 of, medium grey [N 5] and medium dark grey [N 4}, rough fracture. |

**Note:** These finds are not included in the site plot.

**Sites near Site 100 - distinguished by their NGR's.** For convenience, they are here renamed as **100/NGR/A,** **100/NGR/B** etc.

**100/NGR/A** **[NS 95528 10528]**  
**Flint**

Scraper, round, c.20mm in diameter, and possible piercer Both are on very light grey [N 8].

**Chert**

- |   |        |   |
|---|--------|---|
| a | Medium | Chunk, 1 of, olive grey [5 Y 4/1], smooth fracture. |
|---|--------|---|

**100/NGR/B** **[NS 95528 10530]**  
**Pitchstone**

Flake, 1 of, medium grey [N 5] - with small flow-aligned dark mineral grains.

**100/NGR/C** **[NS 95520 10522]**  
**Flint**

Flakes, 4 of, small, light grey [N 7].

**Chert**

- |   |        |   |
|---|--------|---|
| a | Large  | Flakes, elongated, 4 of, medium grey [N 5] and medium dark grey [N 4}, rough fracture.  |
| b | Medium | Chunks and flakes, 17 of, medium grey [N 5] and medium dark grey [N 4}, rough fracture. |
| c |        | Flakes, 3 of, olive grey [5 Y 4/1], smooth fracture.                                    |

**'Grey chert'**

- |   |  |   |
|---|--|---|
| d |  | Flakes, 3 medium, light brownish grey [5 YR 6/1]. |
|---|--|---|

**'Red chert'**

- |   |  |   |
|---|--|---|
| e |  | Chunk, possible core, dusky brown [5 YR 2/2] with traces of dark greenish grey [5 GY 4/1], smooth fracture. |
|---|--|---|

**100/NGR/D** **[NS 95530 10523]**  
**Ceramics**

Numerous very small sherds. Fabric fine-grained, dark grey with red-brown on? exterior.

**Chert**

- |   |        |  |
|---|--------|--|
| a | Medium | Chunks and flakes, 4 of, medium dark grey [N 4}, rough fracture. |
| b |        | Flakes, 2 of, dark greenish grey [5 GY 4/1], smooth fracture.    |

**'Grey chert'**

- |   |  |  |
|---|--|--|
| c |  | Flake, 1 medium, light brownish grey [5 YR 6/1] - smooth fracture. |
|---|--|--|

**100/NGR/E** **[NS 95514 10528]**  
**Chert**

- |   |        |  |
|---|--------|--|
| a | Large  | Flake, elongated, 1 of, medium grey [N 5], pale alteration, rough fracture.                                |
| b |        | Chunk, 1 of, greyish black [N 2] passing into olive grey [5 Y 4/1] below pale alteration, smooth fracture. |
| c | Medium | Chunks and flakes, 11 of, medium dark grey [N 4}, rough fracture.  |

**'Red chert'**

- |   |  |  |
|---|--|--|
| d |  | Chunks - large, 5 of, and 5 medium flakes. This group of fragments appear to have come from a single large block of smooth-fracturing dark greenish grey [5 GY 4/1] chert with large scale mottling in blackish red [5 R 2/2]. |
|---|--|--|

**100/Spoil****Flint****a**

Possible scraper, pale yellowish brown [10 YR 4/2] - burnt cortex.

**Chert****a**

Microlith, 1 of, 19mm long, medium grey [N 5].

**b**

Large

Chunk, possible core, banded medium dark grey [N 4] and moderate brown [5 YR 4/4] - pale alteration, rough fracture.

**c**

Flake, 1 of, medium grey [N 5], pale alteration, rough fracture.

**d**

Medium

Flakes, 4 of, medium dark grey [N 4}, pale alteration, rough fracture.

**e**

Flakes, 4 of, olive grey [5 Y 4/1], smooth fracture.

Daer 2011, Site 100 [NS 95535 10527] and nearby sites

Sample No	Date	Flint	P'stone	Haem	Ceram	Chert-rough			Chert-smooth			Grey chert			Var	Small	Total Chert	S/C	(S-R)/C	Tools'				
						Large	Med	Total	Large	Med	Total	Large	M+S	Total						Mic	Co	Bl	Pl	Sc
100/3/N1	2011	1													1	0	1	1.0	1.0	4	71			
100/4/N1	2011	2				3	8	11	1	1					11	23	11.5	6.0						
100/4/S2	2011	1				6	52	58			3	1	4		11	73	73.0	62.0						
100/4/S3	2011	0					11	11	1	1		1	2		0	14		9.0						
100/5/N1	2011	1				2	7	9						4	13									
100/5/S2	2011	0							1	2	3	2	2		0	5								
100/4/S1,5/S1	2011	11				5	36	41	5	9	14	1	1	3	14	73	6.6	5.4						
		16				16	114	130	8	11	19	5	4	9	4	40	202	10.1						
100/4/N1;4-5/S1	2011	1				5	12	17							0			17.0	17.0					
100/NGR/A	2011	2					1	1							0	1	0.5	0.5						
100/NGR/B	2011		1												0									
100/NGR/C	2011	4				4	17	21		3	3	3	3	1	0	28	7.0	7.0						
100/NGR/D	2011				Many		4	4	4	2	2		1	0	0	7								
100/NGR/E	2011					1	11	12	1		1			10	0	23					1			
		23	1		2+	26	159	185	9	16	25	5	8	13	15	40	282	12.3	10.5					
100/SPOLL	2012	1				2	4	6		4	4						11	11.0	11.0		1			

## Site No 101

Ian Paterson & Tam Ward

### Introduction

The site was originally recorded as:

209    142    **Site No 101**    Chert c20of    NS 95521 10521    Pitchstone

It lay on the lower east flank of Coom Rig at 310m OD.

The furrow was trowelled for a distance of about 2m and only a piece of haematite was recovered, and the spot was abandoned. The haematite was originally suspect as far as age was concerned since it was found in the furrow, however, in the light of later discoveries it is believed that the facettted piece illustrated here is pre historic and as such is a very good example of the material and the way it was being worked to obtain a colouring agent.

The haematite piece (Plates 1 – 4) is a pebble and shows the facets and striae resulting from rubbing on a stone to obtain a powder, some small flakes have been removed from the surface of the stone probably accidentally as it is a soft material and would fracture easily.



Plate 1



Plate 2



Plate 3

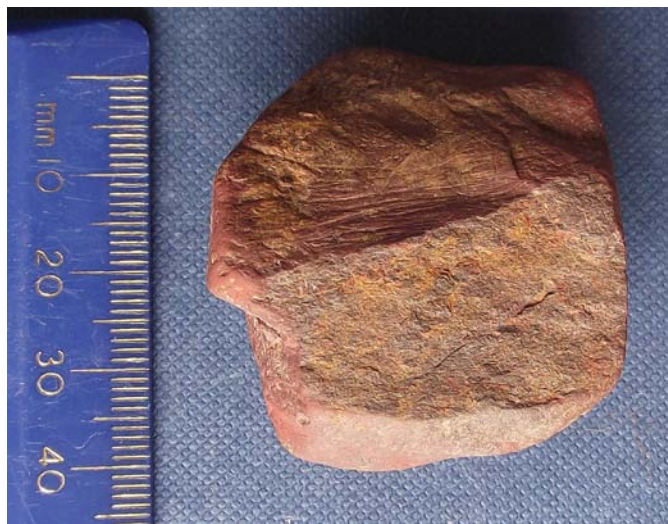


Plate 4

## Site No 102

Ian Paterson & Tam Ward

### Introduction

The site was originally recorded as:

225    154    **Site No 102**    Chert    NS 95530 10533

The location is only 8m further down slope from Site No 99 and is lying between the same furrows (Fig 3). The magnetic bearing of the baseline is also 210° and the site lies at 310m OD and is about ten metres from the southern edge of the Smithwood Burn scarp and is on fairly level ground with a thin lens of peat lying below the turf.

A total of 28 square metres were excavated and overlapping Grids 11/S/1 and 12/S/1 there was a patch of charcoal which when sampled produced only 1 gramme.

The scatter of lithic appears to be fairly uniform for both chert and flint and the proportion of microliths is also similar for the project. This assemblage appears to be entirely Mesolithic in character and may be associated with Site 99 just up slope.

**DAER 2010**  
**Site No 102**  
**CHERT**

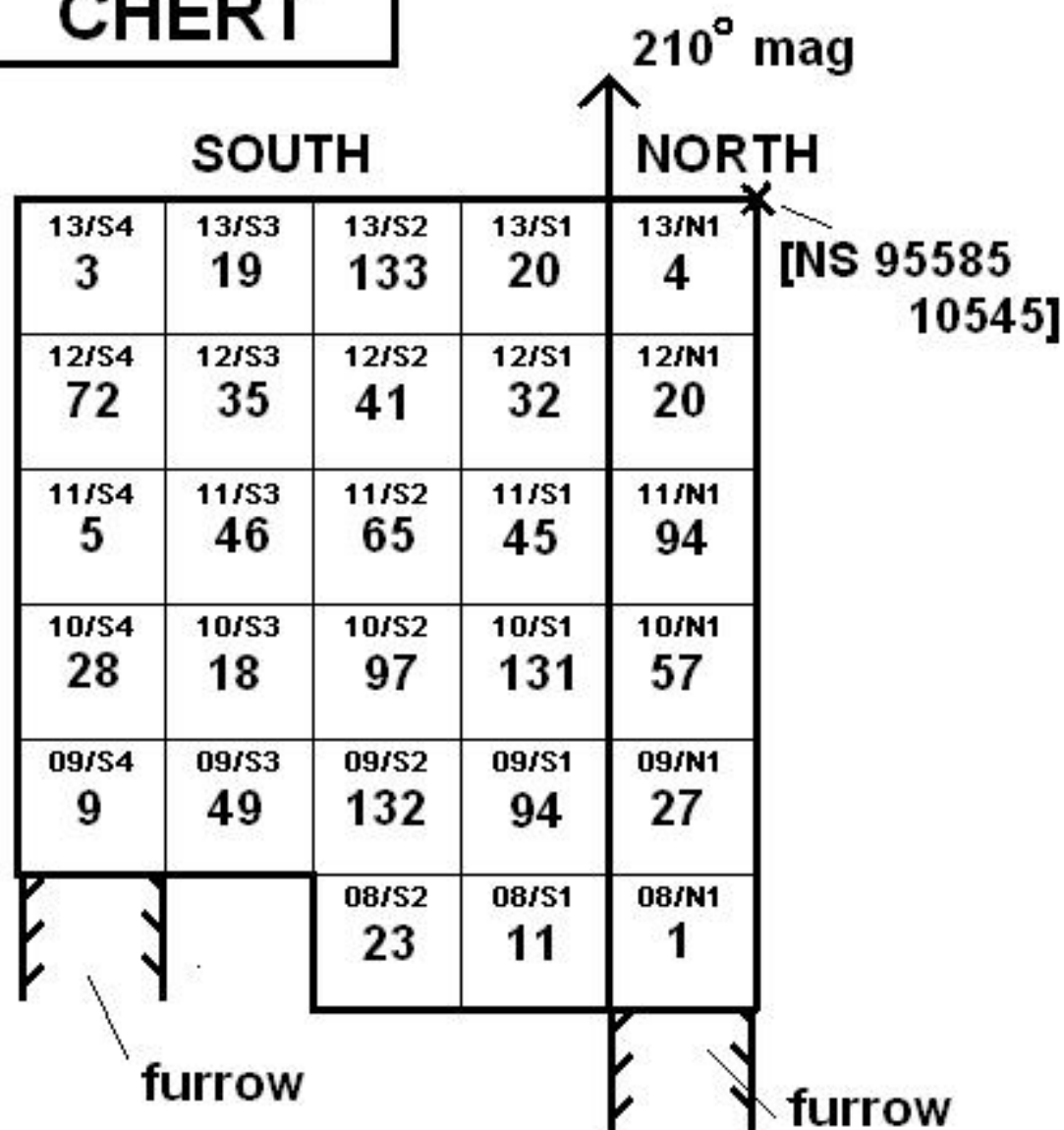


Fig 1

**DAER 2010**  
**Site No 102**  
**FLINT**

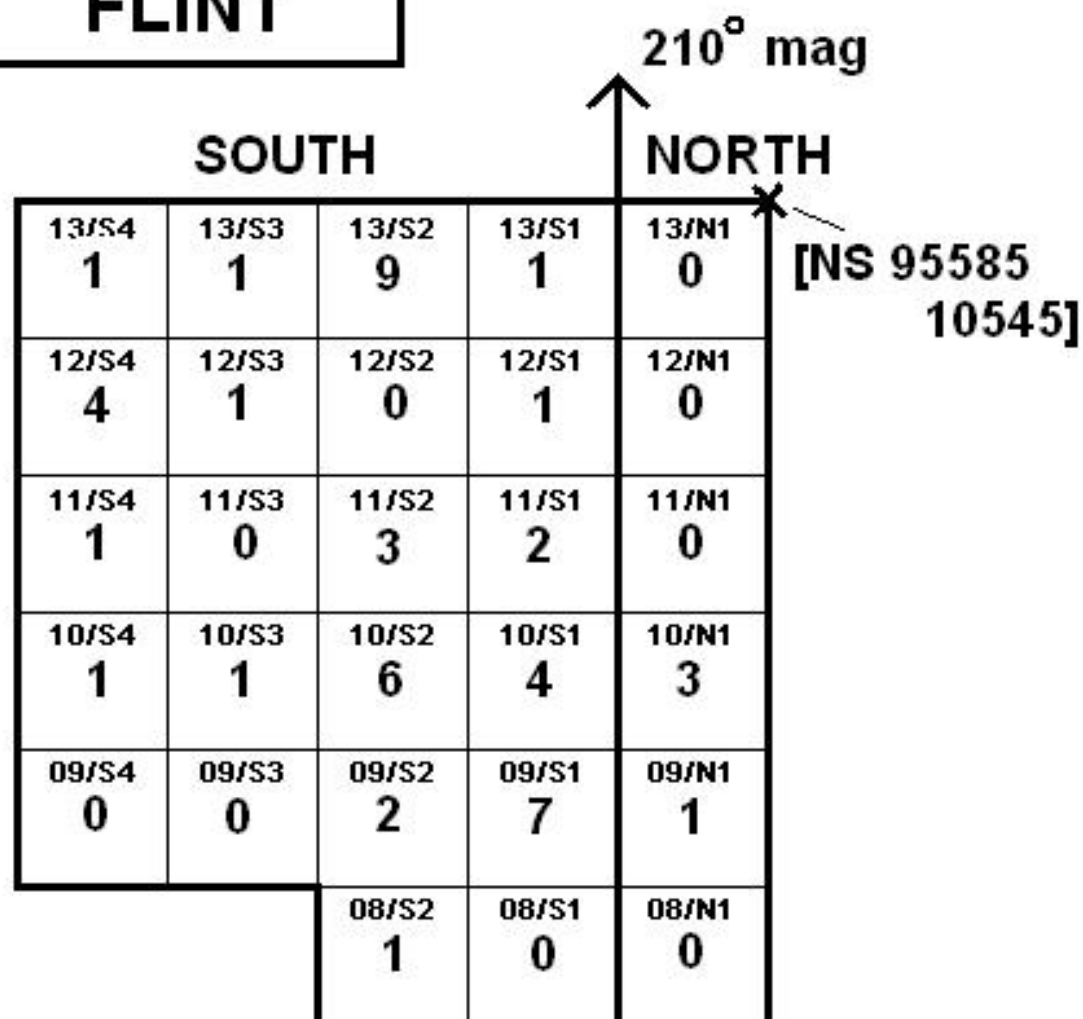


Fig 2



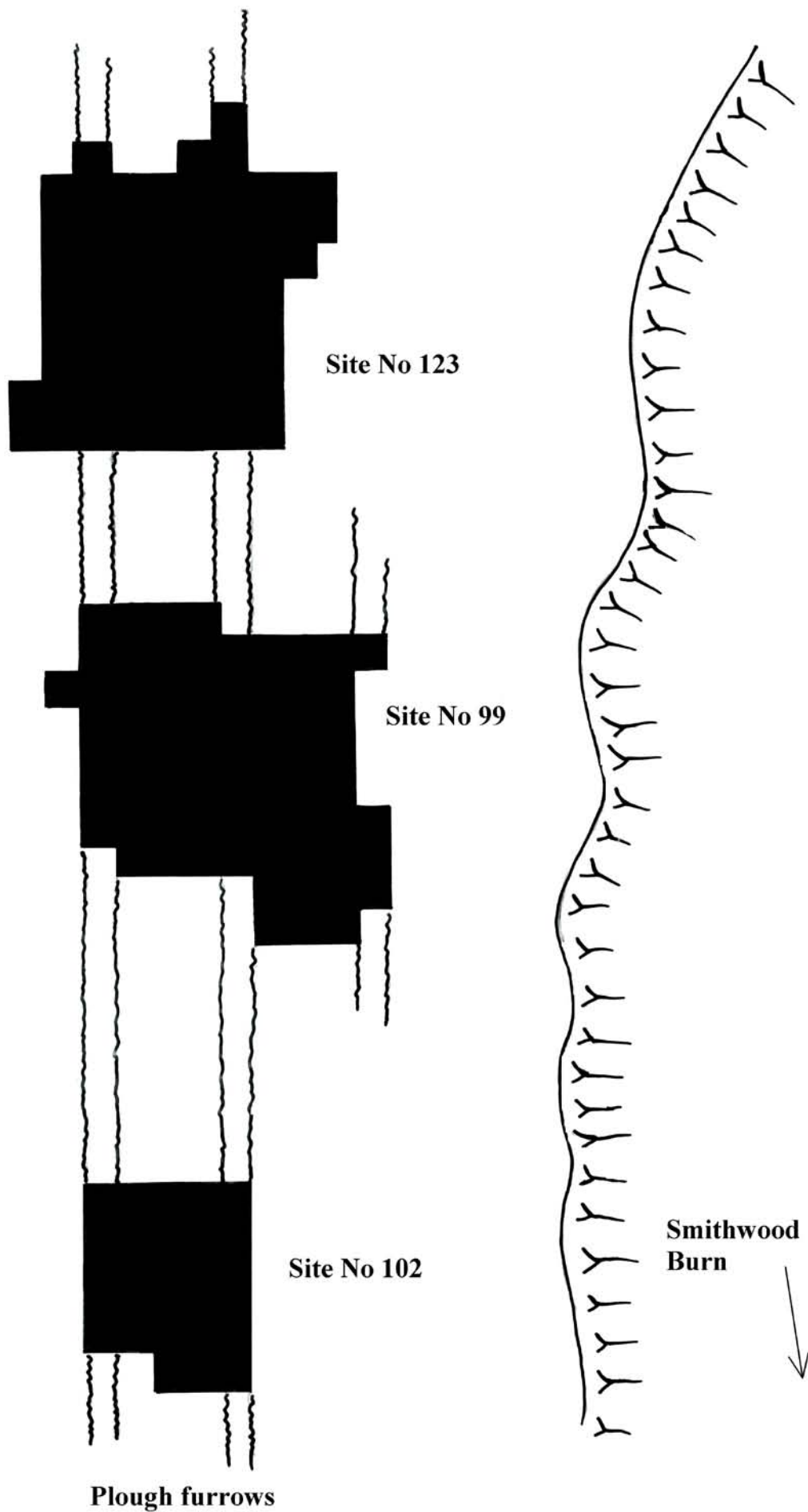


Fig 3



Plate 1



Plate 2



Plate 3



Plate 4



Plate 5

## Excavation finds list

by  
Ian Paterson

### Comment

The main excavation covered 28 square metres. A total of 1393 lithic fragments were recovered. Of these, 383 were small – that is, less than 10mm in length - and, as their identification was in some cases uncertain, they have not been included in the calculations that follow.

The assemblage from the site is composed predominantly of chert. Of the 930 identifiable chert fragments, 75% consisted of the rough-fracturing dark grey type; with about 27 of the total (3%) being the smooth-fracturing greenish-grey variant. About 11% of the total was ‘grey’ chert and there was 3% of ‘red’ chert..

A total of 169 flint fragments were recovered. They occur in small numbers in all but 17 of the grids excavated, and comprise less than 4.5% of the total lithic assemblage. Overall, the ratio of chert to flint was about 22 to 1.

A total of 8 microliths were retrieved – of which 1 was of flint.

No pitchstone, pottery was found on the site, but a single piece of haematite was recovered

### Excavation finds list

#### Site 102 Grid 8/S1

##### Chert.

- |   |         |  |
|---|---------|--|
| a | Large   | Chunk, 1 of, medium dark grey [N 4}, pale alteration, rough fracture.. |
| b | Medium. | Flakes, 2 of, medium dark grey [N 4]. rough fracture.                  |
| c |         | Flakes, 2 of, dark greenish-grey, smooth fracture.                     |
| d | Small.  | Flakes, 4 of, various types.   |

##### ‘Grey chert’

- |   |  |  |
|---|--|--|
| e |  | Flake, 1 medium, light brownish grey [5 YR 6/1], |
|---|--|--|

##### ‘Red Chert’

- |   |  |  |
|---|--|--|
| f |  | Flakes, 1 of, medium, dark greenish-grey with greyish black [N 2] mottling, smooth fracture. |
|---|--|--|

#### Site 102 Grid 8/S2

Flint, Flake, 1 of, pinkish grey [5 YR 6/1].

##### Chert

- |   |        |  |
|---|--------|--|
| a | Large  | Chunk, possible core, 1 of, medium dark grey [N 4], smooth fracture. |
| b | Medium | Flakes, 9 of, medium dark grey [N 4] and dark grey, rough fracture.  |
| c |        | Flakes, 2 of, olive grey [5 Y 4/1], smooth fracture.                 |
| d | Small. | Flakes, 10 of, grey and pale grey.                                   |

##### ‘Red chert’

- |   |  |  |
|---|--|--|
| e |  | Flake, 1 of, medium, moderate brown [5 Y R 3/4]. |
|---|--|--|

#### Site 102 Grid 8/N1

##### Chert

- |   |         |  |
|---|---------|--|
| a | Medium. | Flake, 1 of, dark grey [N 4] - rough fracture. |
|---|---------|--|

**Site 102 Grid 9/S1**

**Flint.**

Flakes and chunks, 7 of, 1 pinkish grey [5 YR 8/1].

**Haematite**

Small chunk, not faceted.

**Chert**

- |                     |         |   |
|---------------------|---------|---|
| a                   |         | Microliths, 2 of, up to 16mm long - 1 is <u>flint</u> , the other is light grey chert.  |
| b                   | Large   | Chunks, 6 of, 2 conjoining, medium dark grey [N 4] -some with pale alteration showing radiolarians - rough fracture.                                      |
| c                   |         | Chunk, possible core, 1 of; dark greenish grey [5 GY 4/1] - smooth fracture.  |
| d                   |         | Chunks, 2 of, greyish black [N 2], rough fracture.  |
| e                   | Medium. | Flakes and chunks, 30 of, rough fracture, medium dark grey [N 4] and medium grey [N 5]. Some have pale alteration.  |
| f                   |         | Flakes and chunks, 5 of, dark greenish grey [5 GY 4/1] - smooth fracture.   |
| g                   | Small.  | Flakes, 34 of, all of above types.  |
| <b>'Grey chert'</b> |         |   |
| h                   |         | Flakes, 1 large, 4 medium, 3 small, light brownish grey [5 YR 4/1] and brownish grey [5 TR 4/1].  |
| <b>'Red Chert'</b>  |         |   |
| j                   |         | Flakes, 8 of, 1 large, 7 medium, 2 are dusky red [5 R 3/4], 3 are pale reddish brown [10 R 5/4], 3 are dark greenish grey [5 GY 4/1] with brown mottling. |

**Site 102 Grid 9/S2**

**Flint**

One rounded chunk, pale brown [5 YR 5/2], with cortex and 1 small pale grey flake.

**Chert**

- |                     |         |  |
|---------------------|---------|--|
| a                   | Large   | Chunks, 4 of, medium dark grey [N 4], rough fracture - pale alteration showing radiolarians.                   |
| b                   |         | Chunk, perhaps core, 1 of; dark greenish grey [5 GY 4/1] - smooth fracture.                                    |
| c                   | Medium. | Flakes and chunks 52 of, medium dark grey [N 4] and dark grey [N3]. Many have pale alteration. Rough fracture. |
| d                   |         | Flakes, 8 of, dark greenish grey [5 GY 4/1] - 8 with red -brown mottling, smooth fracture.                     |
| e                   | Small.  | Flakes, 57 of, all of above types.   |
| <b>'Grey chert'</b> |         |  |
| f                   |         | Chunks and flakes, 1 large, 5 medium, light brownish grey [5 YR 4/1].  |
| <b>'Red Chert'</b>  |         |  |
| g                   |         | Chunks, 1 large, 3 medium, very dusky red [10 R 2/2] - smooth fracture..                                       |

**Site 102 Grid 9/S3**

**Chert**

- a Large Chunks, 4 of, medium dark grey [N 4] and dark grey [N 3], pale alteration - radiolarians visible - rough fracture.
- b Chunks, 3 of, one is in 2 conjoining pieces - all are probably cores - olive grey [5 Y 6/1] [5 Y 2/1], one has red-brown mottling, pale alteration - smooth fracture.
- c Medium. Flakes and chunks, 28 of, medium dark grey [N 4] and brownish grey [5 YR 4/1], rough fracture. Some have pale alteration.
- d Flake, 1 of, olive grey [5 Y 3/2], smooth fracture.
- e Small. Flakes, 7 of, of above types.

**'Red Chert'**

- f Flakes, 6 of, 1 large, 5 medium, 1 is dusky red [5 R 3/4], the others are dark greenish grey [5 GY 4/1] with brown mottling.

**Site 102 Grid 9/S4**

**Chert**

- a Large Chunk, 1 of, medium grey [N 5], with pale alteration; rough fracture
- b Medium. Flakes and chunks, 6 of, medium dark grey [N 4] and dark grey [N 3] - rough fracture.
- c Small. Flakes, 2 of, above types.

**Site 102 Grid 9/N1**

**Flint.**

- Flake, 1 of, bladelike, pinkish grey [5 YR 8/1].

**Chert**

- a Large Chunks, 7 of, medium grey [N 5] to dark grey [N 3], some with pale alteration; rough fracture
- b Medium. Flakes and chunks, 5 of, medium dark grey [N 4] and dark grey [N 3] - rough fracture.
- c Small. Flakes, 11 of, above types.

**'Red Chert'**

- d Flakes, 4 of, medium, 2 are dusky red [5 R 3/4], the other 2 are light brownish grey [5 YR 6/1] with dusky red mottling.

**Site 102 Grid 10/S1**

**Flint**

- One water-rounded chunk and 3 medium flakes, pale yellowish brown [10 YR 6/2], 2 flakes have pale cortex.

**?Pottery**

- Sherds, very small, one contains a small fragment of chert.

**Chert**

- a Large Chunks, 5 of,; 4 are medium dark grey [N 4], 1 is dark grey [N 3] - with pale alteration - rough fracture.
- b Chunks, 4 of, - dark greenish grey [5 GY 4/1] - one with greyish black mottling [N 2] - smooth fracture.
- c Medium. Flakes and chunks, 60 of, medium dark grey [N 4] and medium grey [N 5] - 5 are dark grey [N 3] - rough fracture. Some have pale alteration.
- d Flakes and chunks, 17 of, mostly olive grey [5 Y 3/2] and dark greenish grey [5 GY 4/1] - with smooth fracture. Three have red-brown mottling.
- e Small. Flakes, 30 of, all of above types.

**'Grey chert'**

- f . Flakes, 1 large, 9 medium, light brownish grey [5 YR 4/1].

**'Red chert'**

- g . Flakes, 5 medium, 3 are reddish brown [10 R 3/4] - 2 are olive grey with reddish brown mottling.

**Site 102 Grid 10/S2****Flint.**

Large flake and 1 medium flake in pale red [10 R 6/2]; and 2 medium and 2 small flakes in medium grey.

**Chert**

- |   |         |  |
|---|---------|--|
| a | Large   | Flakes and chunks, 5 of, medium grey and medium dark grey [N5 and N 4] - with rough fracture.                        |
| b |         | Chunks, 5 of, 3 are probably cores, in dark greenish grey [5 GY N 4/1], with smooth fracture - 1 with brown mottling |
| c | Medium. | Flakes, 28 of, medium grey to dark grey [N 5 - N 3] - rough fracture.  |
| d |         | Flakes and chunks, 6 of, olive grey [5 Y 3/2] - 3 with brown mottling - smooth fracture.                             |
| e | Small.  | Flakes, 49 of, various types..   |

**'Grey chert'**

- |   |  |   |
|---|--|---|
| f |  | Flakes, 2 medium, 1 small, light brownish grey [5 YR 4/1] fracture. |
|---|--|---|

**'Red chert'**

- |   |   |  |
|---|---|--|
| g | . | Flakes, 2 medium, reddish brown [10 R 3/4] |
|---|---|--|

**Site 102 Grid 10/S3**

**Flint**, Flake, 14 of - 1 moderate yellowish brown [10 YR 5/4].

**Chert**

- |   |         |   |
|---|---------|---|
| a | Large   | Chunks and flakes, 6 of, medium dark grey [N 4, 3 with ].pale alteration; rough fracture, showing radiolarians. |
| b |         | Chunk, 1 of, possible core, olive grey [5 Y 3/2] smooth fracture.   |
| c | Medium. | Flakes, 5 of, medium dark grey [N 4] - rough fracture.  |
| d | Small.  | Flakes, 6 of, various types.  |

**Site 102 Grid 10/S4**

**Flint**, Flake, 1 of , light brownish grey [5 YR 6/1].

**Chert**

- |   |         |   |
|---|---------|---|
| a | Large   | Chunks, 3 of, dark grey [N 4], 2 with pale alteration; rough fracture - radiolarians. |
| b | Medium. | Flakes, 13 of, medium grey [N 5] - rough fracture.                                    |
| c | Small.  | Flakes, 7 of, various types.  |

**'Grey chert'**

- |   |  |   |
|---|--|---|
| d |  | Flakes, 1 of, medium, light brownish grey [5 YR 4/1]. |
|---|--|---|

**'Red chert'**

- |   |  |  |
|---|--|--|
| e |  | Chunks, 4 of, Flakes, 1 large, 3 medium, mostly reddish brown [10 R 3/4] but all are partly dark greenish grey [5 GY N 4/1]. |
|---|--|--|

**Site 102 Grid 10/N1****Flint**

Flakes, 3 of, large, 2 pinkish grey [5 YR 8/1], 1 light brownish grey [5 YR 6/1].

**Chert**

- |   |         |   |
|---|---------|---|
| a | Large   | Chunks, 8 of, medium grey [N 5] and medium dark grey [N 4] - pale alteration; some showing radiolarians, rough fracture |
| b |         | Chunks, 2 of, medium dark grey [N 4] with smooth fracture..   |
| c | Medium. | Flakes, 20 of, medium grey [N 5] and medium dark grey [N 4] - some with pale alteration - rough fracture.               |
| d |         | Chunks and flakes, 5 of, brownish black [5 YR 2/1], smooth fracture..   |
| e | Small.  | Flakes, 8 of, various types.  |

**'Grey chert'**

- |   |  |  |
|---|--|--|
| f |  | Chunks and flakes, 13 of, 4 large, 9 medium, light brownish grey [5 YR 4/1] - one has red-brown mottling, rough and smooth fracture. |
|---|--|--|

**'Red chert'**

- |   |  |   |
|---|--|---|
| g |  | Chunk, 1 of, large, greyish red [5 R 4/2], smooth fracture. |
|---|--|---|

## Site 102 Grid 11/S1

### Flint

Microlith, 18mm long, and one medium flake - light brownish grey [5 YR 6/1].

### Chert

- |   |         |  |
|---|---------|--|
| a |         | Microliths, 2 of, olive grey [5 Y 3/2] - one with red-brown mottling.  |
| b | Large   | Chunks, 4 of, 1 medium dark grey [N 4], with pale alteration; rough fracture   |
| c |         | Chunks, 3 of, one possibly a core, dark greenish gray [5 GY 4/1], with greyish black [N 2] mottling - smooth fracture - pale alteration, radiolarians. |
| d | Medium. | Flakes, 21 of, medium grey [N 5] and medium dark grey [N 4] - a few with pale alteration - rough fracture.   |
| e |         | Flakes and chunks, 7 of, olive grey [5 Y 3/2] one with brown mottling - smooth fracture.   |
| f | Small.  | Flakes, 6 of, medium grey [N 5], various types.  |

### 'Grey chert'

- |   |  |   |
|---|--|---|
| g |  | Flakes, 2 of, medium, light brownish grey [5 YR 4/1]. |
|---|--|---|

## Site 102 Grid 11/S2

### Flint

Chunk, with cortex - possibly a core, and 2 flakes - light brownish grey [5 YR 6/1].

### Chert

- |   |         |  |
|---|---------|--|
| a |         | Microliths, 2 of, 9 and 12mm long, dark grey [N 4].  |
| b | Large   | Chunks and flakes, 5 of, medium grey [N 5] and medium dark grey [N 4], pale alteration - rough fracture. |
| c | Medium. | Flakes, 26 of, medium grey [N 5] and medium dark grey [N 4], some with pale alteration - rough fracture, |
| d |         | Flakes, 7 of, dark greenish grey [5 GY N 4/1] - some with darker mottling - smooth fracture.             |
| e | Small.  | Flakes, 12 of, smooth and rough fracture.  |

### 'Grey chert'

- |   |         |   |
|---|---------|---|
| f | Medium. | Flakes, 8 of, light brownish grey [5 YR 4/1]. |
|---|---------|---|

### 'Red chert'

- |   |  |  |
|---|--|--|
| g |  | Flakes, 1 large, 4 medium, greyish brown [5 YR 3/2], 2 are partly dark greenish grey [5 GY N 4/1] - smooth fracture. |
|---|--|--|

## Site 102 Grid 11/S3

### Chert

- |   |         |  |
|---|---------|--|
| a |         | Flake ?blade, 47mm long, dark grey [N 3], rough fracture.  |
| b | Large   | Chunks, 2 of, medium grey [N 5] with pale alteration showing radiolarians - rough fracture.              |
| c |         | Flake, 1 of, olive grey [5 Y 4/1] - smooth fracture.   |
| d | Medium. | Flakes, 19 of, medium grey [N 5] and medium dark grey [N 4], some with pale alteration - rough fracture. |
| e |         | Flakes, 3 of, dark grey [N 3] - with smooth fracture.  |
| f | Small.  | Flakes, 18 of, various types.  |

### 'Grey chert'

- |   |  |   |
|---|--|---|
| f |  | Flake, 1 of, medium, light brownish grey [5 YR 4/1], smooth fracture. |
|---|--|---|

### 'Red chert'

- |   |  |  |
|---|--|--|
| g |  | Flake, 1 medium, greyish brown [5 YR 3/2]. |
|---|--|--|



**Site 102 Grid 11/S4****Flint**

Chunk, with cortex - possibly a core - brownish grey [5 YR 4/1].

**Chert**

- |   |         |  |
|---|---------|--|
| a | Large   | Chunk, 1 of, medium grey [N 5 ], pale alteration - rough fracture.           |
| b |         | Chunk, 1 of, medium grey [N 5] - ? a core - smooth fracture.                 |
| c | Medium. | Flakes, 3 of, medium grey [N 5] and medium dark grey [N 4] - rough fracture. |

**Site 102 Grid 11/N1****Chert.**

- |   |        |  |
|---|--------|--|
| a | Large  | Chunks, 3 of, medium grey [N 5], with pale alteration - rough fracture.                                |
| b |        | Chunks, 4 of, dark grey [N 3], with a little pale alteration - rough fracture.                         |
| c |        | Chunks, 3 of, dark grey [N 3] - smooth fracture.   |
| d | Medium | Flakes and chunks, 34 of, medium grey to dark grey [N 3 to N5] - rough fracture.                       |
| e |        | Flakes and chunks, 24 of, greenish grey [5 GY N 4/1] - most with dark grey mottling - smooth fracture. |
| f | Small. | Flakes, 23 of, various types.  |

**‘Grey chert’**

- |   |  |   |
|---|--|---|
| g |  | Chunks, 3 of, medium, light brownish grey [5 YR 4/1]. |
|---|--|---|

**Site 102 Grid 12/S1****Flint**

Chunk, possible core, 1 of, pale yellowish brown [10 YR 6/2] with some cortex.

**Chert.**

- |   |         |   |
|---|---------|---|
| a | Large   | Chunks, 5 of, medium dark grey [N 4], with pale alteration - rough fracture.            |
| b |         | Chunks, 8 of, dark greenish grey [5 GY 4/1] and olive grey [5 Y 4/1] - smooth fracture. |
| c | Medium. | Flakes, 9 of, medium grey and dark grey [N 4 - 5] - rough fracture.                     |
| d |         | Flakes, 8 of, dark greenish grey [5 GY 4/1] and olive grey [5 Y 4/1] - smooth fracture. |

**‘Grey chert’**

- |   |  |   |
|---|--|---|
| e |  | Chunks, 1 large, 1 medium, in light brownish grey [5 YR 4/1]. |
|---|--|---|

**Site 102 Grid 12/S2****Chert.**

- |   |        |   |
|---|--------|---|
| a | Large  | Chunks, 7 of, medium grey and dark grey [N 4 - 5] with pale alteration - rough fracture.                      |
| b |        | Chunks, 4 of, 2 are probably cores, dark greenish grey [5 GY 4/1] and olive grey [5 Y 4/1] - smooth fracture. |
| c | Medium | Flakes and chunks, 21 of, medium grey and dark grey [N 4-5] - rough fracture.                                 |
| d | Small  | Flakes, 9 of, various types.  |



**Site 102 Grid 12/S3****Flint**

Flake, 1 of, pale yellowish brown [10 YR 6/2]; with cortex.

**Chert.**

- |   |         |  |
|---|---------|--|
| a | Large   | Chunk, 1 of, and 3 flakes -dark grey [N 4], 3 with pale alteration - rough fracture. |
| b |         | Chunk, 1 of and 2 flakes, dark greenish grey [5 GY 4/1] - smooth fracture.           |
| c | Medium. | Flakes, 15 of, medium grey and dark grey [N 4-5] - rough fracture.                   |
| d |         | Flakes, 5, of, smooth fracture, olive grey [5 Y 4/1] - 2 with brown mottling.        |
| e | Small.  | Flakes, 5 of, various types.   |

**'Red chert'**

- |   |  |  |
|---|--|--|
| f |  | Flakes, 3 of, in dark greyish red [5 R 3/2], with some dark greenish grey [5 GY 4/1] |
|---|--|--|

**Site 102 Grid 12/S4****Flint**

Flakes, 4 of, 3 pale yellowish brown [10 YR 6/2], 1 pale grey.

**Chert.**

- |   |         |   |
|---|---------|---|
| a | Large   | Chunks and flakes, 13 of, medium grey and dark grey [N 4-5] - pale alteration - rough fracture. |
| b |         | Chunks, 3 of, dark greenish grey [5 GY 4/1] - smooth fracture.                                  |
| c | Medium. | Chunks and flakes, 23 of, medium grey and dark grey [N 4-5]- rough fracture.                    |
| d |         | Flakes, 4, of, olive grey [5 Y 4/1] - 3 with brown mottling - smooth fracture,                  |
| e | Small.  | Flakes, 20 of, various types.   |

**'Grey chert'**

- |   |  |   |
|---|--|---|
| f |  | Flakes, 2 medium, light brownish grey [5 YR 4/1]. |
|---|--|---|

**Site 102 Grid 12/N1****Chert.**

- |   |         |   |
|---|---------|---|
| a | Large   | Chunks, 4 of, dark gray [N 4] with pale alteration - rough fracture.                |
| b | Medium. | Flakes, 6 of, medium grey and dark grey [N 4-5] -. rough fracture.                  |
| c |         | Flakes, 6 of, 5 narrow, elongated, dark greenish grey [5 GY 4/1] - smooth fracture. |
| d | Small.  | Flakes, 2 of, various types..   |

**'Grey chert'**

- |   |  |  |
|---|--|--|
| e |  | Flakes, 2 medium, in light brownish grey [5 YR 5/1]. |
|---|--|--|

**Site 102 Grid 13/S1****Flint**

Flake, 1 of, light brownish grey [5 YR 6/1].

**Chert.**

- |   |         |  |
|---|---------|--|
| a | Large   | Chunks, 5 of, dark gray [N 4] and medium dark grey [N 5] with pale alteration - rough fracture. One with 'iron pan'. |
| b |         | Chunks, 2 of, both are probably cores, dark greenish grey [5 GY 4/1] - smooth fracture.                              |
| c | Medium. | Flakes, 10 of, medium grey and dark grey [N 4-5] - rough fracture.   |
| d | Small.  | Flakes, 5 of, various types.   |

**Site 102 Grid 13/S2 1/2**

**Flint**

Flakes, 2 of, large, light brown [5 YR 6/4] - with cortex, and medium flakes, 4 of, light brownish grey [5 YR 6/1].

**Chert.**

- |   |         |   |
|---|---------|---|
| a | Large   | Chunks, 8 of, dark gray [N 4] and medium dark grey [N 5] - slight pale alteration - rough fracture. |
| b | Medium. | Flakes, 60 of, medium grey and dark grey [N 4-5] - rough fracture.                                  |
| c |         | Flakes, 8 of, olive grey [5 Y 4/1] - smooth fracture.   |
| d | Small.  | Flakes, 24 of, various types.   |

**'Grey chert'**

- |   |  |   |
|---|--|---|
| e |  | Flake, 1 medium - light brownish grey [5 YR 5/1]. |
|---|--|---|

**'Red chert'**

- |   |  |  |
|---|--|--|
| f |  | Flakes, 2 of, medium, greyish brown [5 YR 3/2] with part olive grey [5 Y 4/1] - smooth fracture. |
|---|--|--|

**Site 102 Grid 13/S2 2/2**

**Flint**

Chunk with cortex, 1 of, and flakes, 2 of, 1 light brownish grey [5 YR 6/1; 1 light grey [N 7].

**Chert.**

- |   |         |  |
|---|---------|--|
| a | Large   | Chunks, 15 of, dark gray [N 4] and medium dark grey [N 5] with pale alteration - rough fracture. |
| b | Medium. | Flakes, 10 of, medium grey and dark grey [N 4-5] - rough fracture.                               |
| c |         | Chunk, 1 of, olive grey [5 Y 4/1] - smooth fracture.   |
| d | Small.  | Flakes, 2 of, rough fracture.  |

**'Grey chert'**

- |   |  |   |
|---|--|---|
| e |  | Flake, 1 medium - light brownish grey [5 YR 5/1]. |
|---|--|---|

**'Red chert'**

- |   |  |  |
|---|--|--|
| f |  | Flake, 1 of, large, greyish brown [5 YR 3/2] with patches of olive grey [5 Y 4/1] - smooth fracture. |
|---|--|--|

**Site 102 Grid 13/S3**

**Flint**

Flake, 1 of, small, light brownish grey [5 YR 5/1].

**Chert.**

- |   |         |  |
|---|---------|--|
| a | Large   | Flakes, 2 of, dark gray [N 4] and medium dark grey [N 5] - rough fracture. |
| b | Medium. | Flakes, 11 of, medium grey and dark grey [N 4-5] - rough fracture.         |
| c | Small.  | Flakes, 6 of, various types.   |

**Site 102 Grid 13/S4**

**Flint**

Flake, 1 of, small, light grey [N 7].

**Chert**

- |   |         |   |
|---|---------|---|
| a | Medium. | Flake, 1 of, medium dark grey [N 4] - rough fracture. |
|---|---------|---|

**'Grey chert'**

- |   |  |   |
|---|--|---|
| b |  | Flakes, 2 medium - light brownish grey [5 YR 5/1] - one with greenish tint. |
|---|--|---|

**Site 102 Grid 13/N1**

**Chert**

- |   |         |  |
|---|---------|--|
| a | Large   | Chunks, 2 of, dark gray [N 4] and medium dark grey [N 5] - rough fracture. |
| b | Medium. | Flakes, 2 of, dark grey [N 4] - rough fracture.                            |

**Site 102 Grid 11/S1 and 12/S1**

**Chert**

- |   |         |   |
|---|---------|---|
| a | Large   | Chunks, 3 of, dark gray [N 4] and medium dark grey [N 5] with pale alteration - rough fracture. |
| b |         | Chunks, 3 of, 2 are probably cores, dark greenish grey [5 GY 4/1] - smooth fracture.            |
| c | Medium. | Flakes, 7 of, medium grey and dark grey [N 4-5] - rough fracture.                               |
| d | Small.  | Flakes, 13 of, various types.   |

**Site 102 Spoil (2012)**

**Flint**

Flakes, 4 of, medium, light brownish grey [5 YR 6/1].].

**Chert.**

- |   |        |   |
|---|--------|---|
| a |        | Microlith, 1 of, 13mm long by up to 3mm wide – dark greenish gray [5 GY 4/1]. |
| b | Large  | Chunks, 2 of, dark gray [N 4] - pale alteration - rough fracture.             |
| c | Medium | Flakes and chunks, 6 of, medium grey and dark grey [N 4-5] - rough fracture.  |
| d | Medium | Flakes, 4 of, olive grey [5 Y 4/1] - smooth fracture.                         |
| e | Small. | Flakes, 7 of, various types – most are type d.                                |
- ‘Grey chert’**
- |   |        |  |
|---|--------|--|
| f | Medium | Flake, 1 of, light brownish grey [5 YR 5/1]. |
|---|--------|--|

Daer 2011 Site 102 [NS 95585 10545]

Sample No		Flint	P'stone	Haem	Ceram	Chert-rough			Chert-smooth			Grey chert			Var	Small Total	Total Chert	Tools'					R/C	(R-Q)/C	Comment
						Large	Med	Total	Large	Med	Total	Large	M+S	Total				Mic	Co	BI	PI	Sc			
102/8/S1	2011	0				1	2	3							1	1							23.0	13.0	P = 'Red chert'
102/8/S2	2011	1					9	9	1	2	3					1	10								P = 'Red chert'
102/8/N1	2011	0					1	1									1								
102/9/S1	2011	7		1		8	30	38	1	5	6	1	7	8	8	34							13.4	8.6	P = 'Red chert'
102/9/S2	2011	2				4	52	56	1	8	9	1	5	6	4	57	132						66.0	37.5	P = 'Red chert'
102/9/S3	2011	0				4	28	32	3	1	4				6	7	49								P = 'Red chert'
102/9/S4	2011	0				1	6	7								2	9								
102/9/N1	2011	1				7	5	12							4	11	27						27.0	16.0	
102/10/S1	2011	4				5	60	65	4	17	21	1	9	10	5	30	131						32.8	25.3	P = 'Red chert'
102/10/S2	2011	6				5	28	33	5	6	11	2	2	2	2	49	97						16.2	8.0	P = 'Red chert'
102/10/S3	2011	1				6	5	11	1		1					6	18						18.0	12.0	
102/10/S4	2011	1				3	13	16							4	7	28						28.0	21.0	P = 'Red chert'
102/10/N1	2011	3				8	20	28	2	5	7	4	9	13	1	8	57						19.0	16.3	P = 'Red chert'
102/11/S1	2011	2				4	21	25	3	7	10		2	2	6	45							22.5	19.5	
102/11/S2	2011	3				5	26	31	7	7	7	8	8	5	12	65							21.7	17.7	P = 'Red chert' - 1 large, 4 medium
102/11/S3	2011	0				3	19	22	1	3	4	1	1	1	1	18	46								
102/11/S4	2011	1				1	3	4	1		1					5							5.0	5.0	
102/11/N1	2011	0				7	34	41	3	24	27	3	3	3	23	94							32.0	32.0	
102/12/S1	2011	1				5	9	14	8	8	16	1	1	2		32									
102/12/S2	2011	0				7	21	28	4		4				9	41									
102/12/S3	2011	1				4	15	19	3	5	8				3	35							35.0	30.0	P = 'Red chert'
102/12/S4	2011	4				13	23	36	3	4	7	2	2	2	20	65							16.3	11.3	
102/12/N1	2011	0				4	6	10		6	6	2	2	2	2	20									
102/13/S1	2011	1				5	10	15	2		2				5	22							22.0	17.0	
102/13/S2 1/2	2011	6				8	60	68		8	8	1	1	1	2	24	103						17.2	13.2	P = 'Red chert'
102/13/S2 2/2	2011	3				15	10	25	1	1	1	1	1	1	1	30							10.0	9.3	P = 'Red chert'
102/13/S2 1-2/2	2011	9				23	70	93	9	9	9	2	2	2	3	26	133						14.8	11.9	P = 'Red chert'
102/13/S3	2011	1				2	11	13							6	19							19.0	13.0	
102/13/S4	2011	1					1	1				2	2	2		3							3.0		

## Site No 103

Ian Paterson & Tam Ward

### Introduction

Site No 103

226 155 **Site No 103** Chert 10of NS 95604 10540

This location was designated as an excavation but it was never pursued beyond the original uplift in the furrow.